

Badische Landesbibliothek Karlsruhe

Digitale Sammlung der Badischen Landesbibliothek Karlsruhe

3 Quadrilles suivis de valse sur des motifs de Nathalie de MM. de Caraffa et Girowerz

arrangés pour deux violons, alto et basse et flute ou flageolet (ad lib)

1er Quadrille

Tolbecque, Jean Baptiste

Paris, 1833

[urn:nbn:de:bsz:31-184557](https://nbn-resolving.org/urn:nbn:de:bsz:31-184557)

Dunh 2675

3 QUADRILLES
suivis de Valses

sur des motifs de

NATHALIE

de M. W. Caraffa et Spavero

ARRANGÉS POUR

deux Violons, Alto et Basse
et Flûte ou Flageolet (ad lib.)

PAR
J. B. Tolbocque
Chef d'Orchestre des Bals de la Cour

1. Viol
2. Viol
Alto
Basse
Flûte
Flageolet

N° 1

Prix: 4^l. 50^c.

PARIS, Chez **Maurice Schlesinger** R. Richelieu. 97

Maurice Schlesinger

VERBODEN TOEGANG
TOEGANG VERBODEN
VERBODEN TOEGANG

1^{re} VIOLON

N^o 4.

Handwritten musical score for the first violin part of No. 4. The piece is in 2/4 time and begins with a treble clef and a key signature of one flat. The notation includes various rhythmic patterns, including sixteenth and thirty-second notes, and rests. Dynamic markings include *f* (forte) and *p* (piano). There are also markings for *cres.* (crescendo) and *F^{te}* (first ending). The piece concludes with a double bar line and the word **TRENIS**.

N^o 5.

Handwritten musical score for the first violin part of No. 5. The piece is in 2/4 time and begins with a treble clef and a key signature of one sharp. The notation includes various rhythmic patterns, including sixteenth and thirty-second notes, and rests. Dynamic markings include *f* (forte) and *ff* (fortissimo). The piece concludes with a double bar line and the word **FINALE**.

VALE

Handwritten musical score for a piece titled "VALE". It is in 3/4 time and begins with a treble clef and a key signature of two sharps. The notation includes various rhythmic patterns, including eighth and sixteenth notes. Dynamic markings include *p* (piano). The piece concludes with a double bar line and the marking **DC** (Da Capo).

1365 1^o Q

2 NATHALIE
en Quatuor

2^{me} VIOLON.

J. B. TOLBECQUE.

1^{er} QUADRILLE
N^o 1.

Musical score for the first quadrille, featuring two staves. The first staff begins with a treble clef, a key signature of one flat (B-flat), and a 2/4 time signature. It starts with a forte (*f*) dynamic and includes a section marked with a double bar line and repeat signs. The second staff continues the melody with a crescendo (*cres.*) marking. The third staff features a section with a forte (*f*) dynamic and a section with a fortissimo (*ff*) dynamic. The fourth staff concludes with a section marked *ff* and a double bar line, followed by the instruction "PANTALON".

Musical score for the second quadrille, featuring two staves. The first staff begins with a treble clef, a key signature of one flat (B-flat), and a 2/4 time signature. It starts with a forte (*f*) dynamic and includes a section marked with a double bar line and repeat signs. The second staff continues the melody with a piano (*p*) dynamic. The third staff features a section with a piano (*p*) dynamic. The fourth staff concludes with a section marked *p* and a double bar line, followed by the instruction "D.C. ÉTÉ".

Musical score for the third quadrille, featuring two staves. The first staff begins with a treble clef, a key signature of one flat (B-flat), and a 6/8 time signature. It starts with a piano (*p*) dynamic and includes a section marked with a double bar line and repeat signs. The second staff continues the melody with a fortissimo (*ff*) dynamic.

1363 170

2^{me} VIOLON.

3

DC. *ff* DC. POULE

N^o 4. *f*

cres *f* *p* *cres* *f* § TRENIS

N^o 5. *f* *f*

§ FINALE

VALE. *p*

1363 r9

² NATHALIE
en Quatuor

ALTO

J.B. TOLBECQUE.

1^{re} QUADRILLE
N^o 1.

mf

cres

cres

cres

f

cres

ff

ff

PANTALON

N^o 2.

f

p

f

p

D.C. ÉTÉ

N^o 3.

p

ff

1363 1^{re} Q.

ALTO.

Musical notation for the first system, including a treble clef, a key signature of one flat, and a 3/4 time signature. The music features a melody with a dynamic marking of *ff* and concludes with a double bar line and the instruction "D.C. POULE".

N° 4. Musical notation for the second system, starting with a treble clef, a key signature of one flat, and a 2/4 time signature. The music begins with a dynamic marking of *f* and includes a section marked *p*.

Musical notation for the third system, featuring a treble clef, a key signature of one flat, and a 2/4 time signature. It includes dynamic markings of *cres* and *f*, and ends with a double bar line and the instruction "TRENIS".

N° 5. Musical notation for the fourth system, starting with a treble clef, a key signature of one sharp, and a 2/4 time signature. The music features a melody with a dynamic marking of *f* and includes a section marked *ff*.

Musical notation for the fifth system, featuring a treble clef, a key signature of one sharp, and a 2/4 time signature. It includes a dynamic marking of *p*.

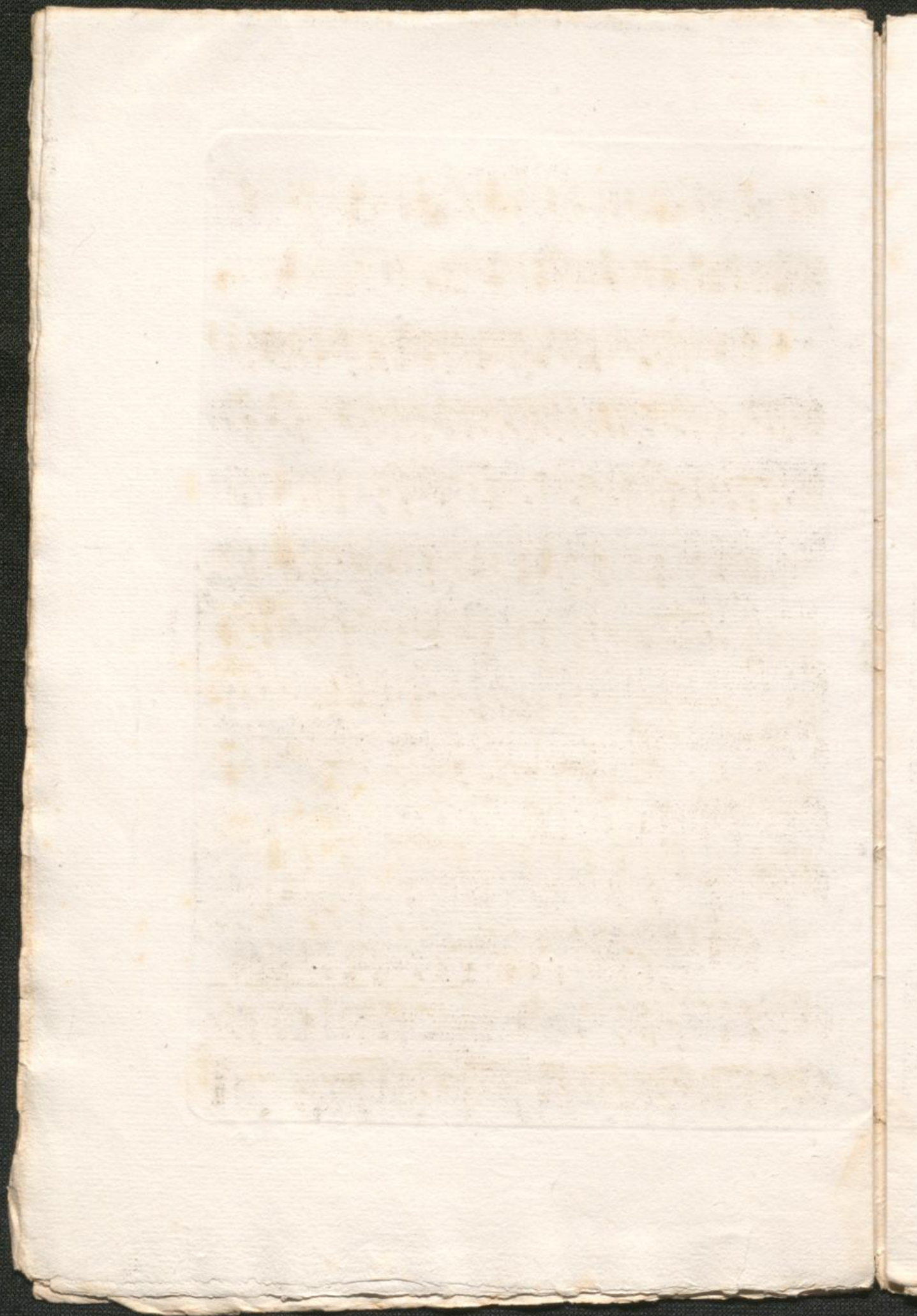
Musical notation for the sixth system, featuring a treble clef, a key signature of one sharp, and a 2/4 time signature. It concludes with a double bar line and the instruction "FINALE".

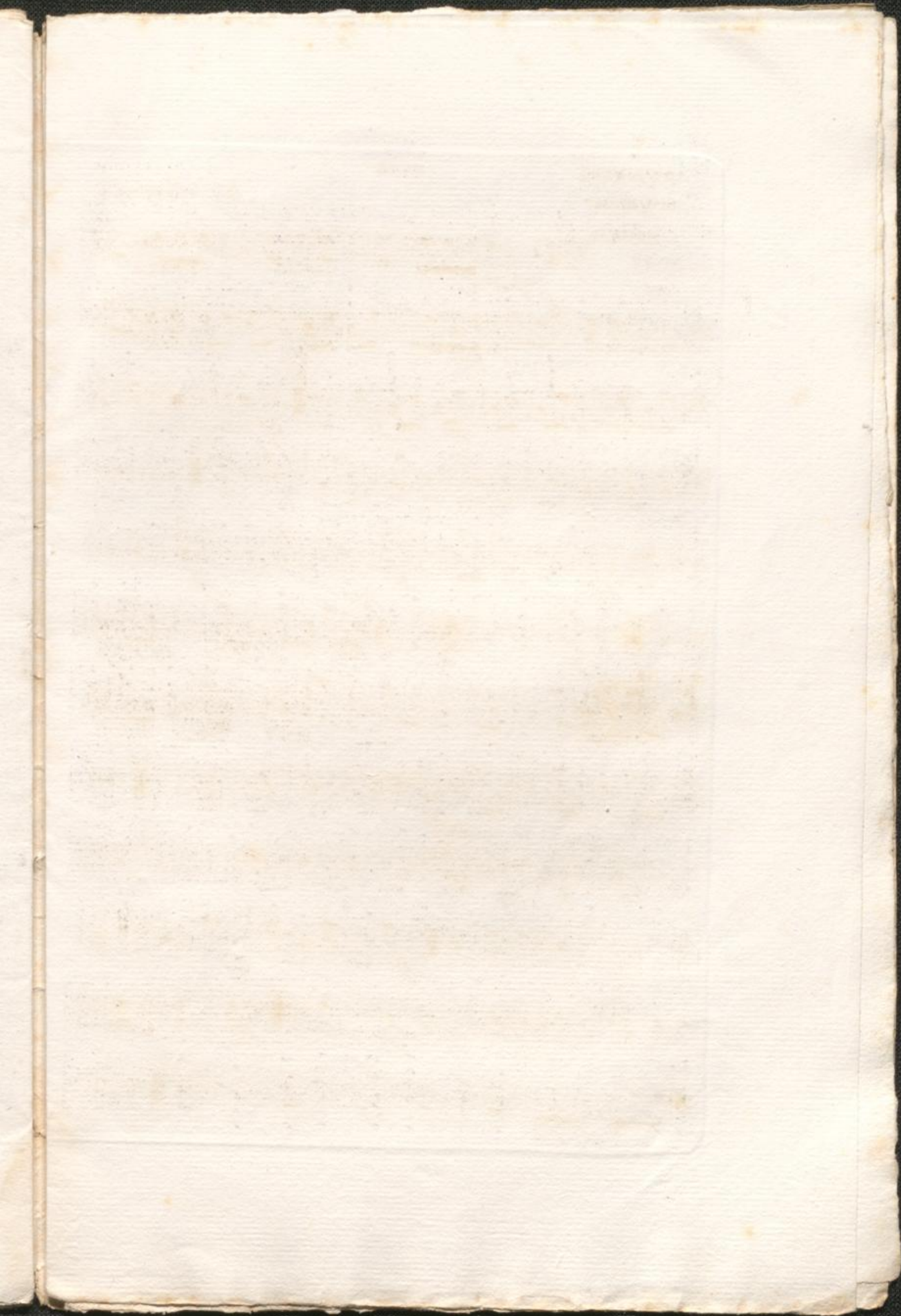
VALSE Musical notation for the seventh system, starting with a treble clef, a key signature of two sharps, and a 3/4 time signature. The music begins with a dynamic marking of *p*.

Musical notation for the eighth system, featuring a treble clef, a key signature of two sharps, and a 3/4 time signature. It includes a dynamic marking of *f*.

Musical notation for the ninth system, featuring a treble clef, a key signature of two sharps, and a 3/4 time signature. It concludes with a double bar line and a repeat sign.

1363 1. Q.





2 NATHALIE
en Quatuor

BASSE

J. B. TOLBECQUE.

1^{re} QUADRILLE.

N^o 1.

mf *cres* *cres* *f* *ff* §

f *piz* *p* *arco* §

p *piz* *arco* §

p §

p §

p §

p §

D.C. POULE

1563 1^{re} Q.

N^o. 4. $\text{B} \flat \frac{2}{4}$ §

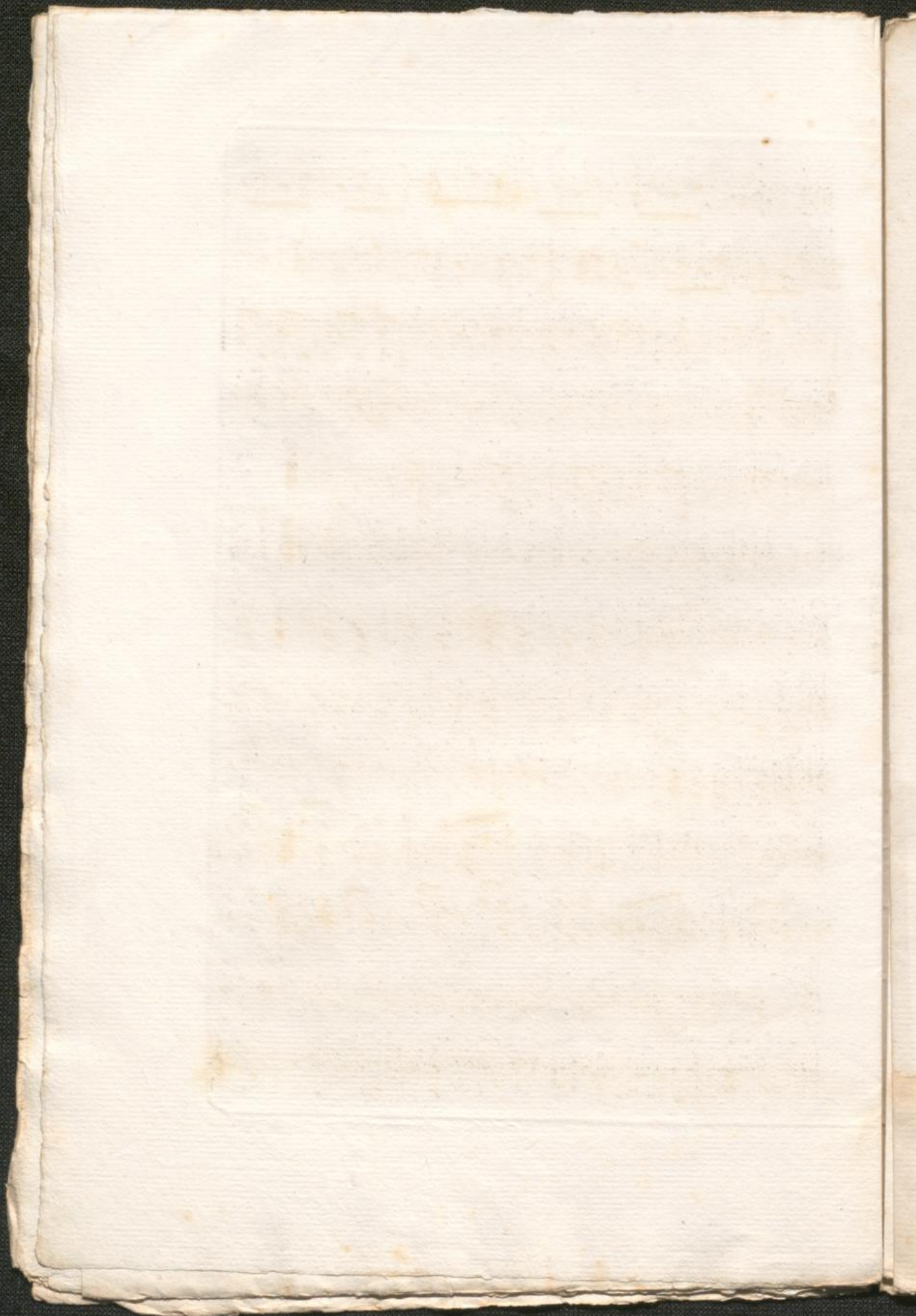
TRENIS

N^o. 5. $\text{B} \sharp \frac{2}{4}$ §

FINALE

WALSE $\text{B} \sharp \frac{3}{4}$ p

1565 1f Q.



2 NATHALIE
en Quatuor

FLUTE

J. B. TOLBECQUE.

1^{re} QUADRILLE.

N^o 1.

mf
res *res* *res*
f *ff*
ff
PANTALON

N^o 2.

f *p* *f*
p
tutti *DC.*
ETE

N^o 5.

f *DC.* *ff* *DC.*
POULE

1565 1^{re} Q.

1565 150.

FLUTE

Nº 4. *f* *S*

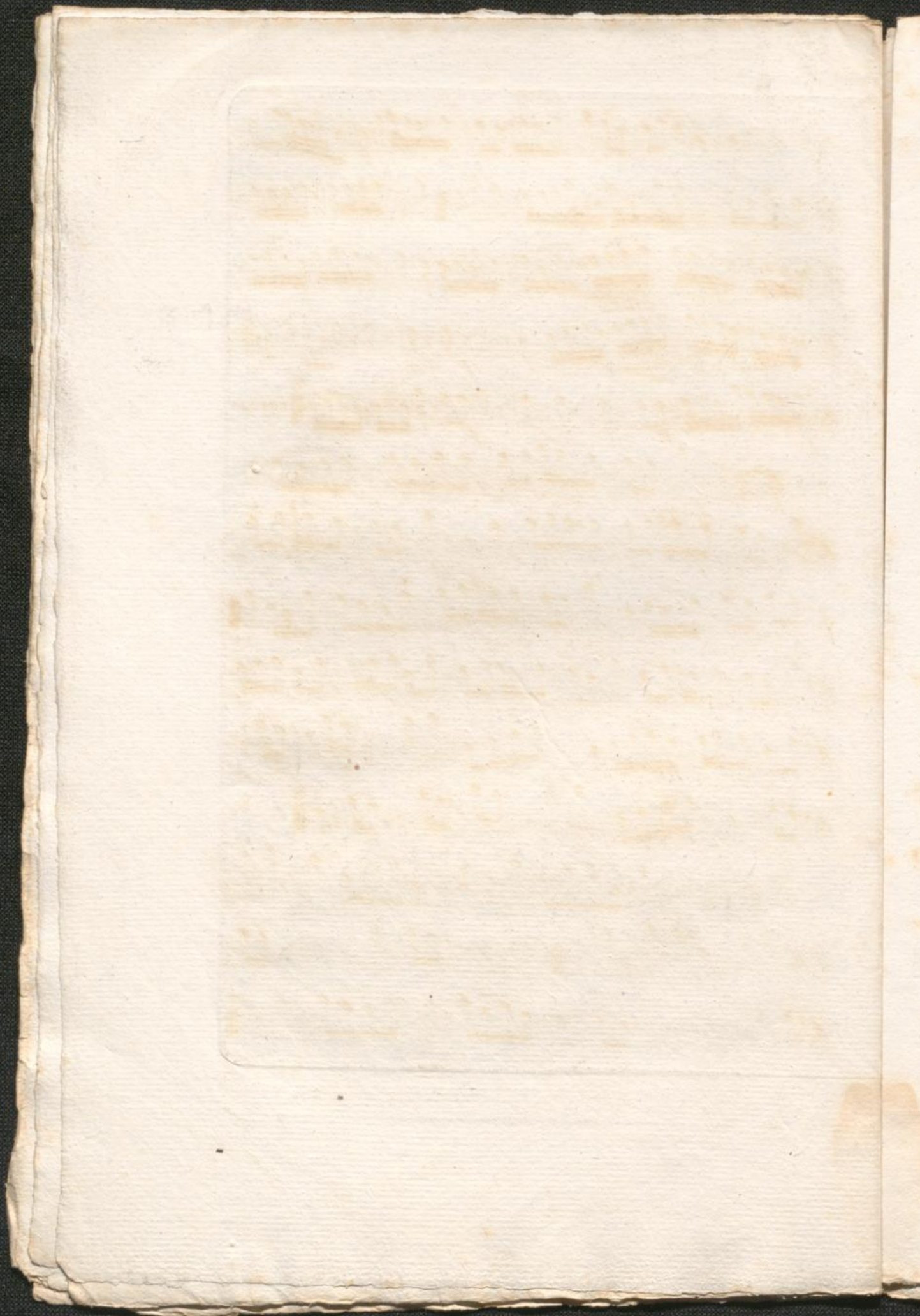
TRENIS

Nº 5. *f* *S*

FINALE

VALSE. *f* *S*

D.C.



2 NATHALIE
en Quatuor

FLAGEOLET

J B TOLBECQUE

1^{er} QUADRILLE
N° 1.

mf

cres

cres

cres

ff

PANTALON

N° 2.

f

p

D.C.

ÉTÉ

N° 5.

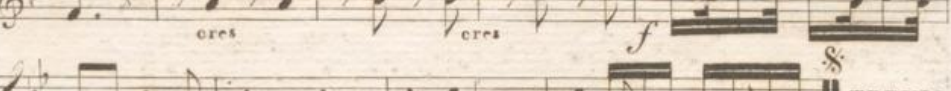
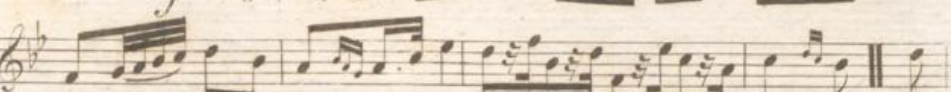
f

D.C.

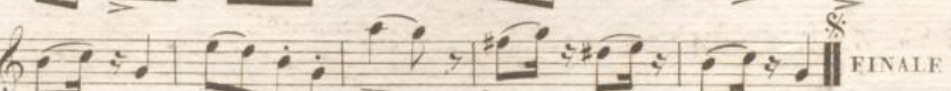
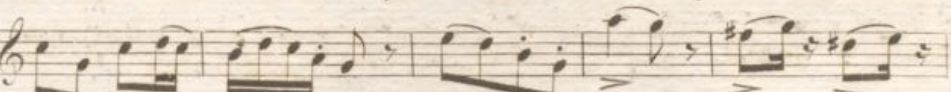
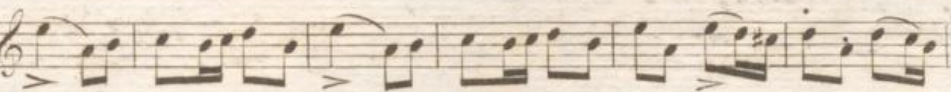
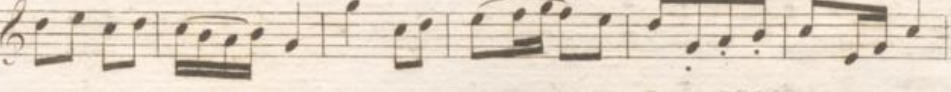
1565. 1^{er} Q.

FLAGEOLET

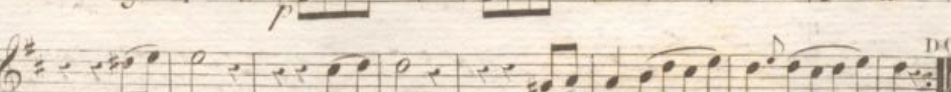
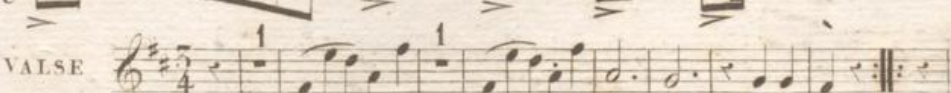
DC. 5
POULE



TRENIS



FINALE



DC

1565. f. Q.

