

Badische Landesbibliothek Karlsruhe

Digitale Sammlung der Badischen Landesbibliothek Karlsruhe

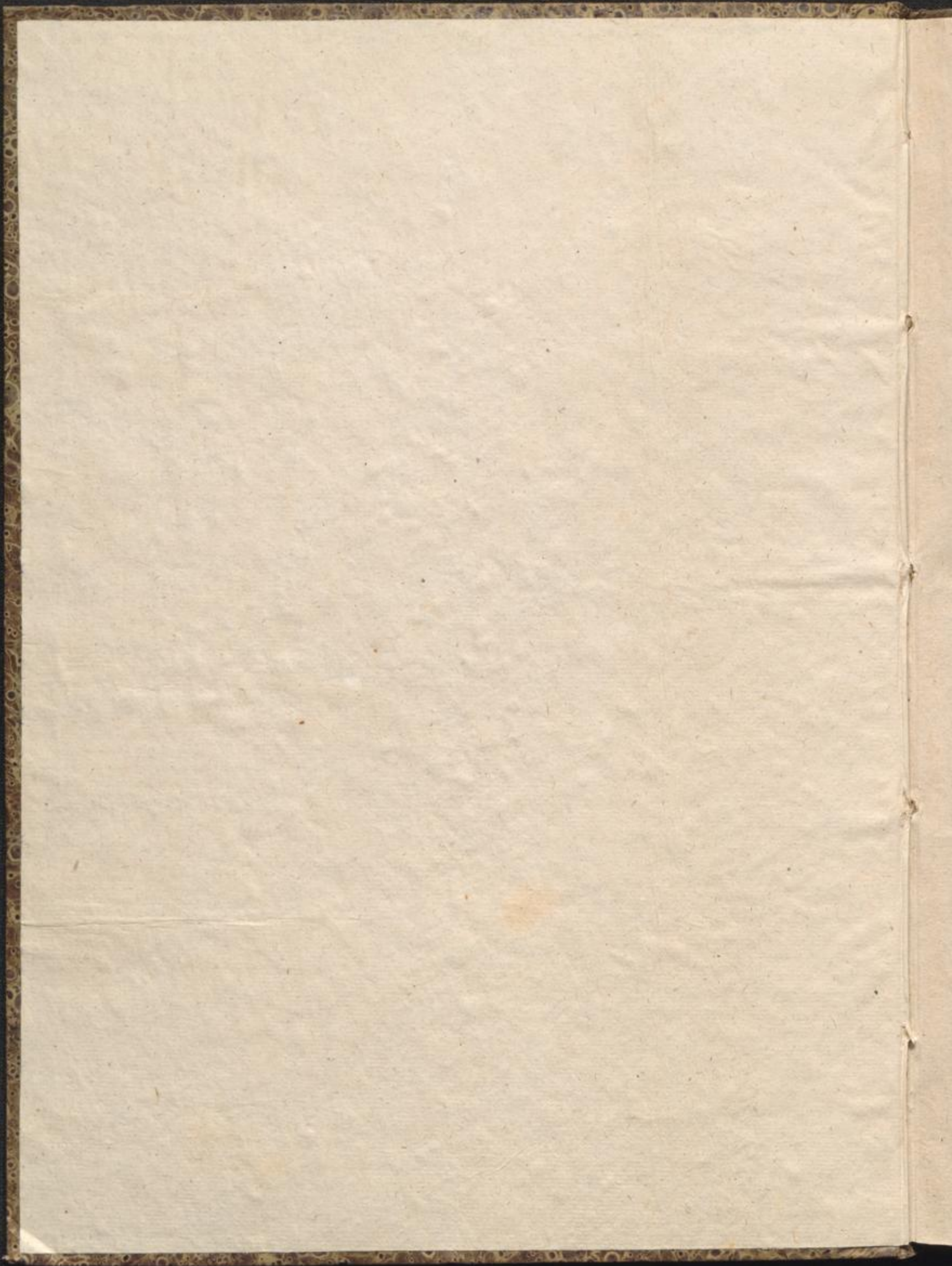
Messa in Es

Preindl, Joseph

Vienna, 1809

Fagott I

[urn:nbn:de:bsz:31-161184](https://nbn-resolving.org/urn:nbn:de:bsz:31-161184)

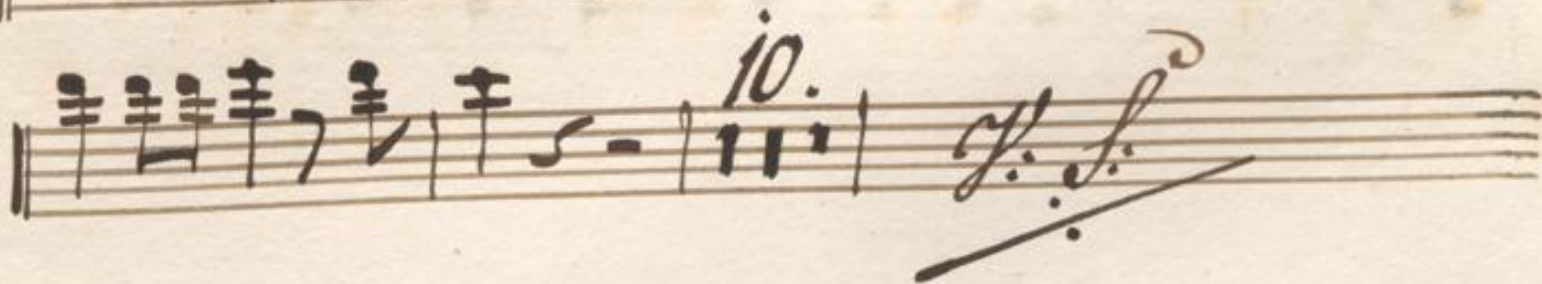
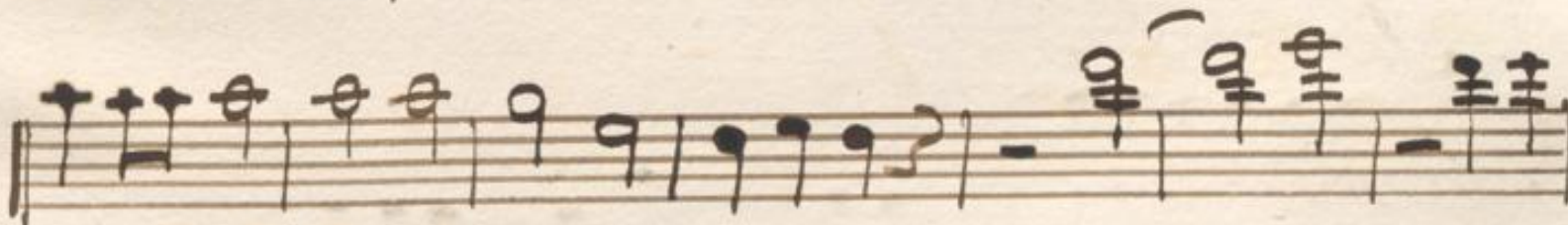
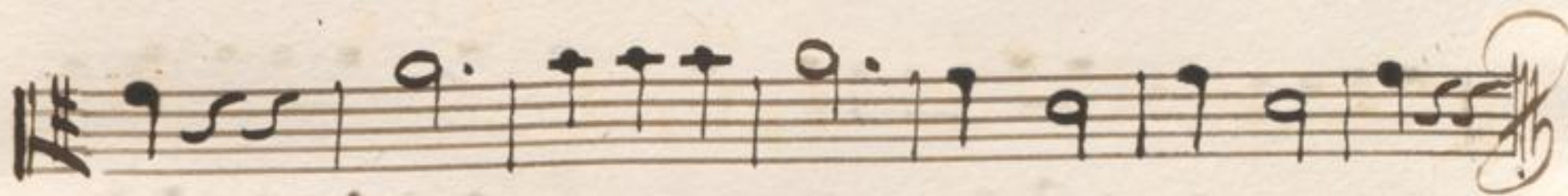
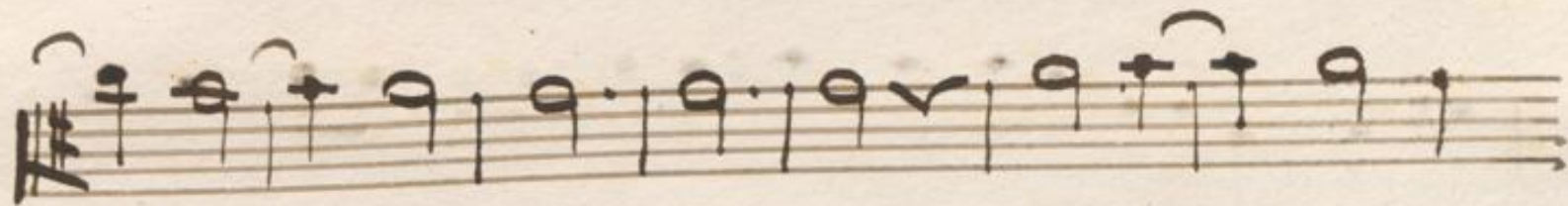
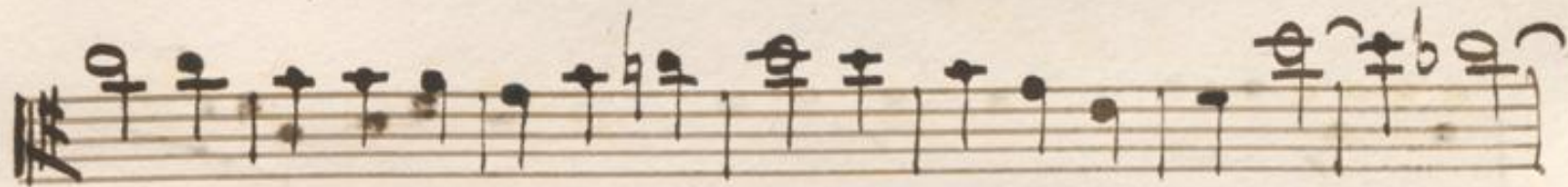
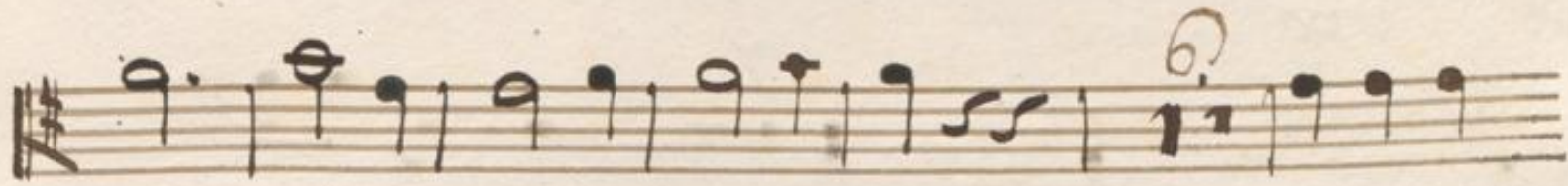
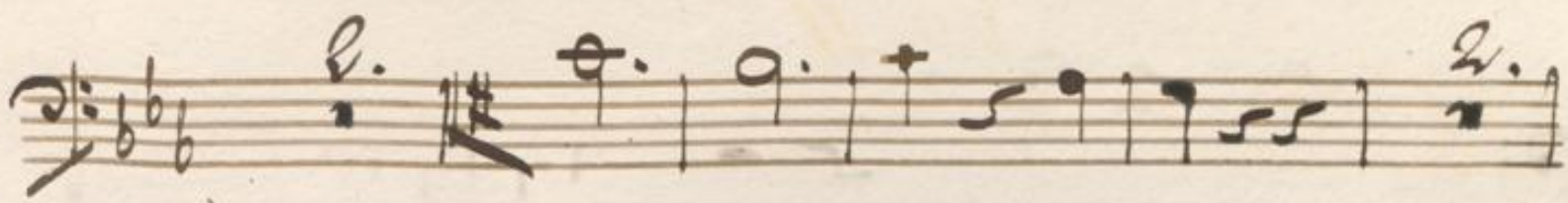


No. II.

Maria.

Andante.

The page contains two musical sections. The first section, titled 'Maria', is marked 'Andante' and is written in 2/4 time with a key signature of two flats. It consists of eight staves of music. The first staff begins with a treble clef and a 5-measure rest. The second staff starts with a bass clef and a forte dynamic marking. The third staff begins with a treble clef and a forte dynamic marking. The fourth staff starts with a bass clef and a forte dynamic marking. The fifth staff begins with a treble clef and a forte dynamic marking. The sixth staff starts with a bass clef and a forte dynamic marking. The seventh staff begins with a treble clef and a piano dynamic marking. The eighth staff starts with a bass clef and a piano dynamic marking. The second section, titled 'Gloria', is marked 'Allegro' and is written in 3/4 time with a key signature of two flats. It consists of two staves of music. The first staff begins with a treble clef and a forte dynamic marking. The second staff starts with a bass clef and a forte dynamic marking.



Handwritten musical score for a section of a piece. The notation includes a treble clef, a key signature of two flats (B-flat and E-flat), and a common time signature (C). The music is written on seven staves. The first staff begins with a dynamic marking of *ppp* and a measure number of 24. The second staff is marked *Andante* and features a fermata over a measure with a measure number of 7. The subsequent staves contain various rhythmic patterns, including eighth and sixteenth notes, and chords. The notation is in a cursive, handwritten style.

Section titled *Sanctus*, marked *Adagio* in 4/4 time. The section begins with a treble clef, a key signature of two flats, and a common time signature. The first staff is marked *For.* and contains a melodic line. The second staff continues the melodic line. The notation is in a cursive, handwritten style.

Osanna. Allegro

The first system of the *Osanna* section consists of three staves. The top staff is a vocal line in G major, 2/4 time, starting with a treble clef and a key signature of one flat. It begins with a half rest followed by a quarter note G, then a quarter note A, and a quarter note B. The second and third staves are piano accompaniment. The second staff starts with a treble clef and a key signature of one flat, featuring a series of chords and eighth notes. The third staff continues the accompaniment with chords and rests.

Benedictus. Andante

The *Benedictus* section is written in G major, 2/4 time, and is marked *Andante*. It consists of seven staves. The top staff is a vocal line starting with a treble clef and a key signature of one flat. It begins with a half rest followed by a quarter note G, then a quarter note A, and a quarter note B. The following six staves are piano accompaniment. The second staff starts with a treble clef and a key signature of one flat, featuring a series of chords and eighth notes. The third staff continues the accompaniment with chords and rests. The fourth staff features a series of chords and eighth notes. The fifth staff continues the accompaniment with chords and rests. The sixth staff features a series of chords and eighth notes. The seventh staff continues the accompaniment with chords and rests. The section concludes with a double bar line and a key signature change to G major.

Osanna Da Capo

Agnus Dei.
Adagio.

Handwritten musical score for the Agnus Dei section. It consists of five staves of music. The first staff begins with a treble clef, a common time signature (C), and a key signature of one flat (B-flat). The tempo is marked 'Adagio'. The music features a melodic line with various note values and rests, accompanied by a bass line with chords and single notes. A dynamic marking 'p^{oo}' is present in the second staff. The notation is in a cursive, historical style.

Dona Nobis.
Allegro.

Handwritten musical score for the Dona Nobis section. It consists of four staves of music. The first staff begins with a treble clef, a common time signature (C), and a key signature of one flat (B-flat). The tempo is marked 'Allegro'. The music features a melodic line with various note values and rests, accompanied by a bass line with chords and single notes. A dynamic marking 'f' is present in the second staff. The notation is in a cursive, historical style.



No. III.

Allegro.

