

# **Badische Landesbibliothek Karlsruhe**

**Digitale Sammlung der Badischen Landesbibliothek Karlsruhe**

## **Messa in C**

**Preindl, Joseph**

**Vienna, 1800**

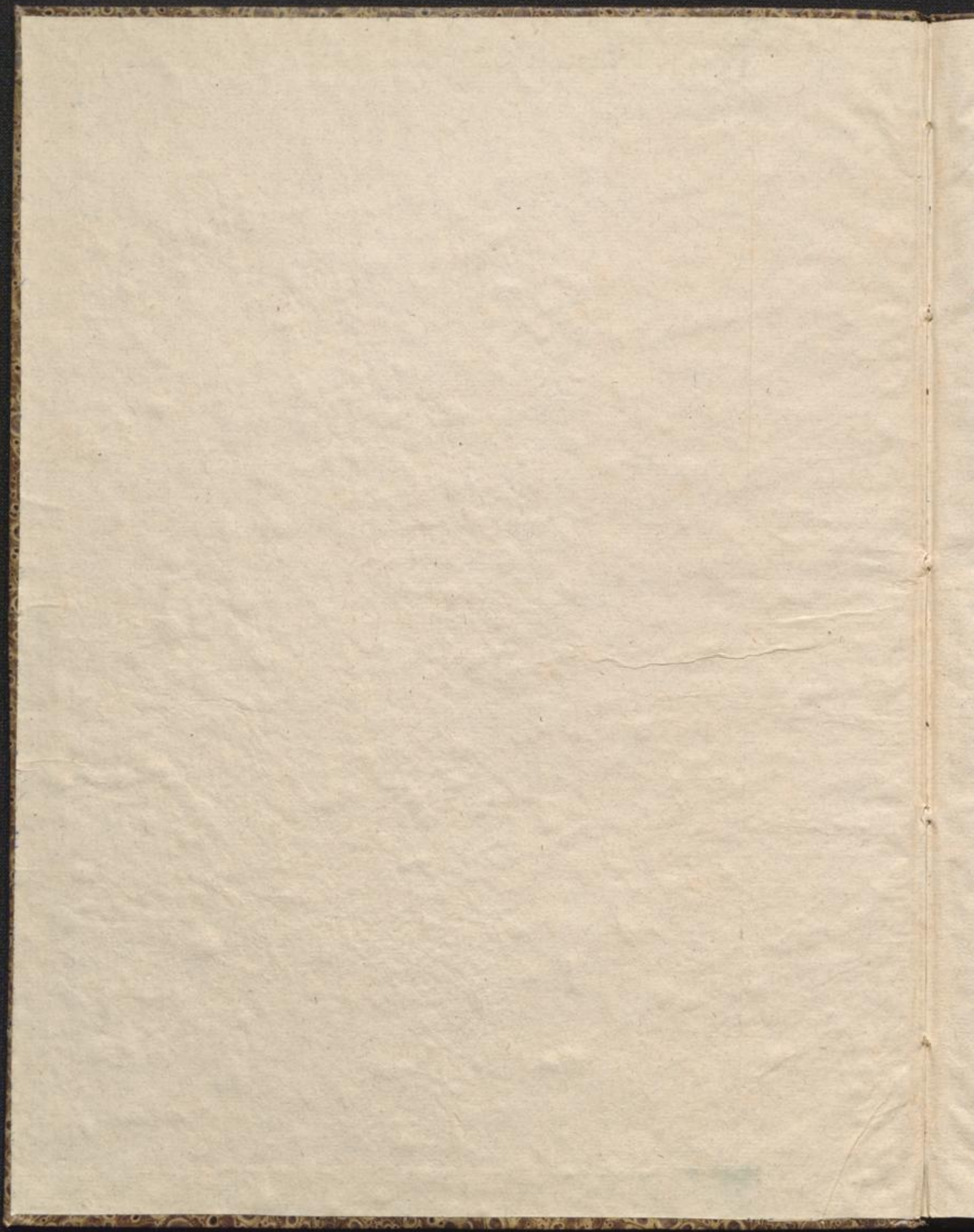
Pauken

[urn:nbn:de:bsz:31-161140](https://nbn-resolving.org/urn:nbn:de:bsz:31-161140)

Deck 2325

VI Messen  
von  
J. Preindl.  
Tympani.

16.



No 3.

Andante

Timpani in C

Kyrie

Musical notation for the Kyrie section, featuring a treble clef, common time signature, and dynamic markings of *f* and *p*. It includes rhythmic patterns with slurs and accents.

Gloria.

Presto

Musical notation for the Gloria section, featuring a treble clef, common time signature, and dynamic markings of *f* and *p*. It includes rhythmic patterns with slurs and accents.

Gratias. tacet

Quoniam.

All<sup>o</sup>

Musical notation for the Quoniam section, featuring a treble clef, common time signature, and dynamic marking of *f*. It includes rhythmic patterns with slurs and accents.

Credo.

All<sup>o</sup>

Musical notation for the Credo section, featuring a treble clef, 3/4 time signature, and dynamic marking of *f*. It includes rhythmic patterns with slurs and accents.

Et incarnatus tacet

Et resurrexit

All<sup>o</sup>

Musical notation for the Et resurrexit section, featuring a treble clef, 3/4 time signature, and dynamic marking of *f*. It includes rhythmic patterns with slurs and accents.

V.S.

Timpani

Timpani musical notation for the first section, measures 1-26. The notation is on a single staff with a bass clef. It features a series of rhythmic patterns, including dotted rhythms and sixteenth-note runs. Dynamic markings 'p' and 'f' are present. Measure numbers 6, 13, 20, and 26 are indicated above the staff.

Adagio

Timpani musical notation for the Adagio section, measures 27-36. The notation is on a single staff with a bass clef. It begins with a double bar line and the word 'Sanctus'. The tempo is marked 'Adagio'. Measure numbers 27, 30, and 36 are indicated above the staff.

All<sup>o</sup> 4

Timpani musical notation for the first Ofanna section, measures 37-46. The tempo is marked 'All<sup>o</sup> 4'. The notation is on a single staff with a bass clef. Measure numbers 37, 40, and 46 are indicated above the staff.

Ofanna

Timpani musical notation for the second Ofanna section, measures 47-56. The notation is on a single staff with a bass clef. Measure numbers 47, 50, and 56 are indicated above the staff.

Benedictus tacet

All<sup>o</sup> 6

Timpani musical notation for the third Ofanna section, measures 57-66. The tempo is marked 'All<sup>o</sup> 6'. The notation is on a single staff with a bass clef. Measure numbers 57, 60, and 66 are indicated above the staff.

Ofanna

Agn: Dei  
tacet

All<sup>o</sup> 13

Timpani musical notation for the Donanobis section, measures 67-80. The tempo is marked 'All<sup>o</sup> 13'. The notation is on a single staff with a bass clef. Measure numbers 67, 70, and 80 are indicated above the staff.

Donanobis

Timpani musical notation for the first section of the final section, measures 81-90. The notation is on a single staff with a bass clef. Measure numbers 81, 84, and 90 are indicated above the staff.

Timpani musical notation for the second section of the final section, measures 91-100. The notation is on a single staff with a bass clef. Measure numbers 91, 94, and 100 are indicated above the staff.

Timpani musical notation for the third section of the final section, measures 101-110. The notation is on a single staff with a bass clef. Measure numbers 101, 104, and 110 are indicated above the staff.

