

Badische Landesbibliothek Karlsruhe

Digitale Sammlung der Badischen Landesbibliothek Karlsruhe

Messa in D

Preindl, Joseph

Vienna, 1810

Bass

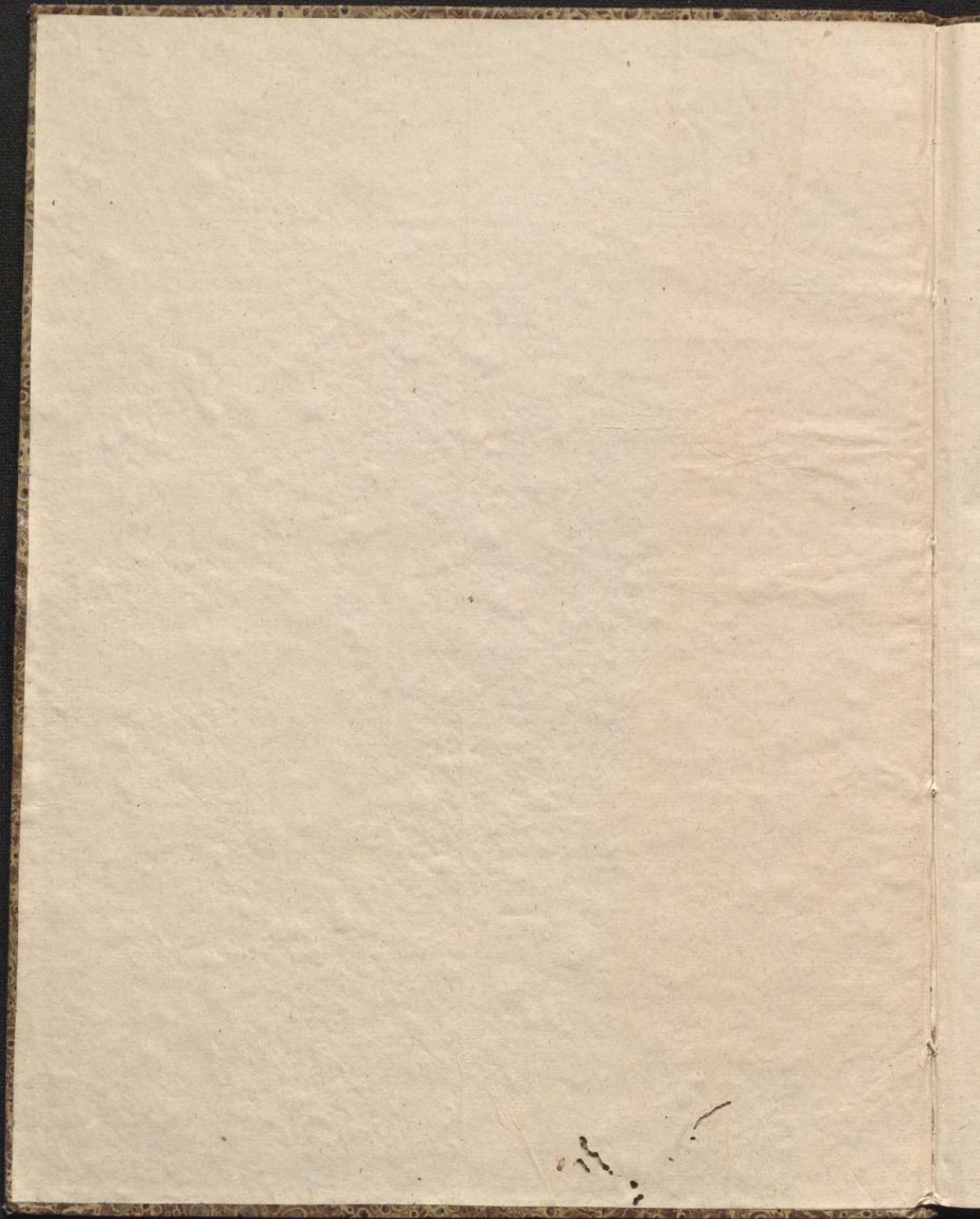
[urn:nbn:de:bsz:31-161227](https://nbn-resolving.org/urn:nbn:de:bsz:31-161227)

III, 1, 1

Dr. 2325

VI Messen
von
J. Freindl
C. Passo.

8.



No. 6.

Andante.

Violone.

Kyrie. *p* *f*

Allegro.

Gloria. *f*

Allegro.

Credo. *f*

Violone.

A handwritten musical score for the instrument Violone, consisting of 14 staves of music. The score is written in a single system with a common time signature (C) and a key signature of one sharp (F#). The notation includes various rhythmic values, slurs, and dynamic markings. The dynamics include *p* (piano), *f* (forte), and *fp* (fortissimo). The music features a mix of eighth and sixteenth notes, often beamed together, and some rests. The final staff concludes with a double bar line and repeat dots.

Adagio.

Violone.

Sanctus. *f*

Musical notation for the beginning of the Sanctus section. It consists of two staves: a treble clef staff with a melodic line and a bass clef staff with a bass line. The key signature has one sharp (F#) and the time signature is 2/4. The tempo is marked 'Adagio.' and the dynamics include 'f' and 'sf'.

All^o

O fanna.

Musical notation for the O fanna section. It consists of two staves: a treble clef staff with a melodic line and a bass clef staff with a bass line. The key signature has one sharp (F#) and the time signature is 2/4. The tempo is marked 'All^o'.

Andante.

Benedict^s *f*

Musical notation for the Benedictus section. It consists of two staves: a treble clef staff with a melodic line and a bass clef staff with a bass line. The key signature has one sharp (F#) and the time signature is 2/4. The tempo is marked 'Andante.' and the dynamics include 'f'.

Adagio. Violone.
Agnus Dei.

Musical score for the Agnus Dei section, Violone part, Adagio tempo. The score consists of six staves of music. The first staff begins with a treble clef, a key signature of one flat (B-flat), and a 2/4 time signature. The music is written in a single melodic line. Dynamic markings include *f* (forte) at the beginning, *p* (piano) in the second measure, and a crescendo leading to *f* followed by *p* in the fifth measure. The piece concludes with a final cadence on the sixth staff.

Allegro.
Dona. *f*

Musical score for the Dona section, Violone part, Allegro tempo. The score consists of six staves of music. The first staff begins with a treble clef, a key signature of one flat (B-flat), and a common time signature (C). The music is written in a single melodic line. The tempo is marked Allegro and the dynamic is *f* (forte). The piece concludes with a final cadence on the sixth staff.

