

Badische Landesbibliothek Karlsruhe

Digitale Sammlung der Badischen Landesbibliothek Karlsruhe

Graduale benedictinum - Cod. Schwarzach 13

[Oberrhein (Schwarzach?)], [1605]

In dedicatione templi introitus

[urn:nbn:de:bsz:31-216594](https://nbn-resolving.org/urn:nbn:de:bsz:31-216594)

In Dedicatiōe templi Introit.

T

erribilis est locus iste

hic domus dei est et porta ce

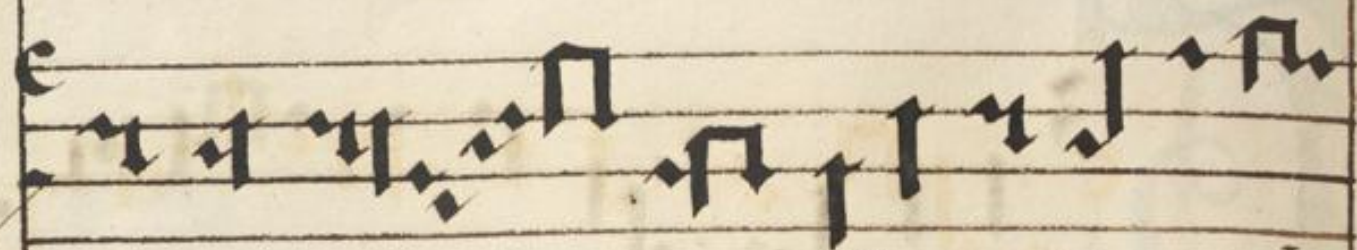
li et uocabitur aula

dei **Q**uia dilecta

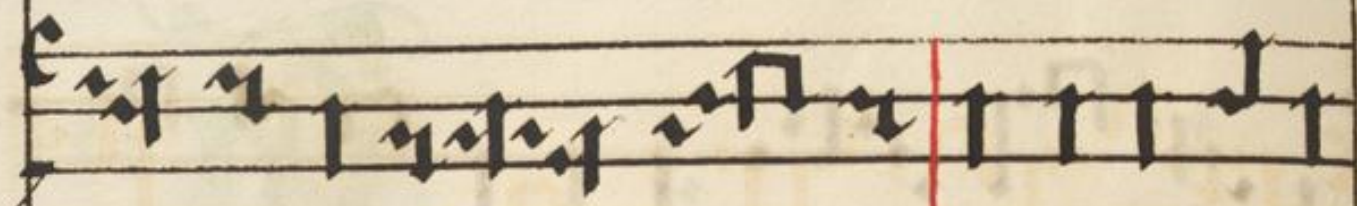
tabernacula tua domine uirtutum concu

piscit et deficit anima mea in atria do

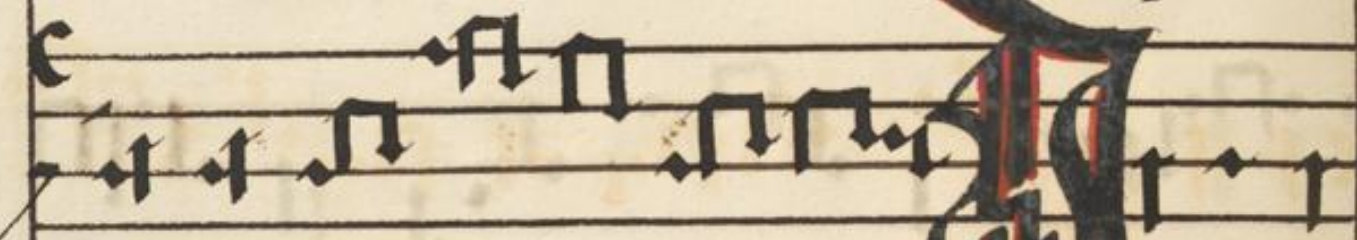
mi ni **L**ocus iste a



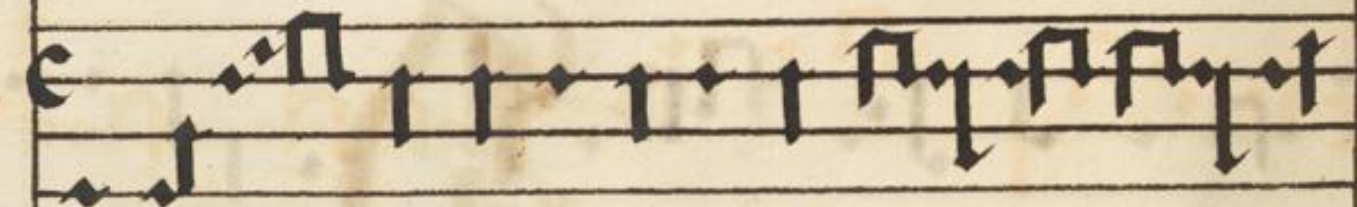
de o fac tus est in esti ma bi



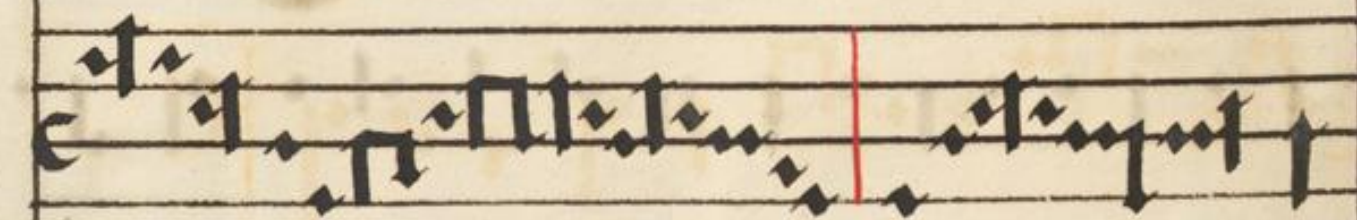
le sacra mē tū ar rep hē si



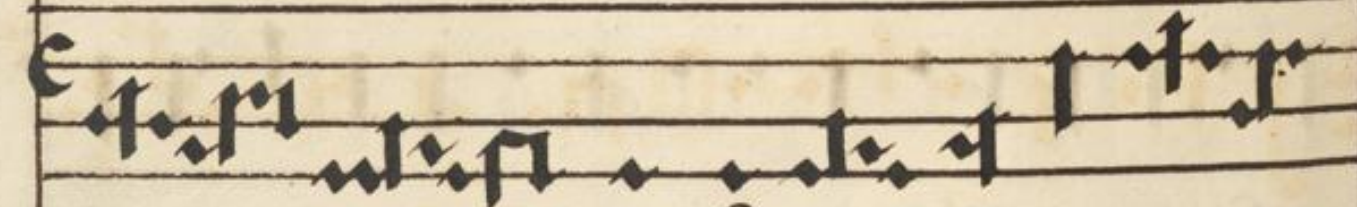
bi lis est **D**eus cu



i as tā tan geloz chori



erau di



pre ces seruo rū tuo



rū

214
Allia. Clor. ex.
ultatiōis. ut.
infra. Allia. ii.

Alle lu ia

Ue de

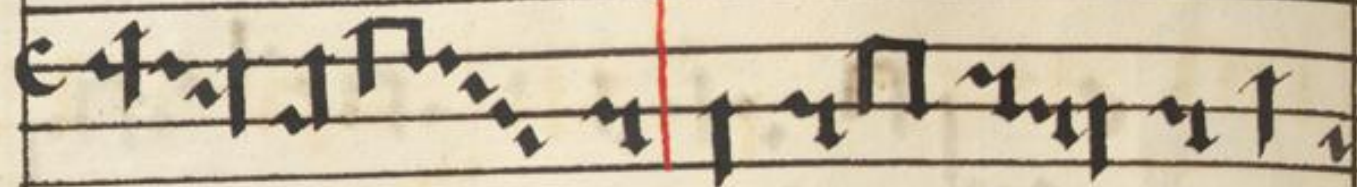
et in ce lū de us in si

on et ti bi red de tur uo

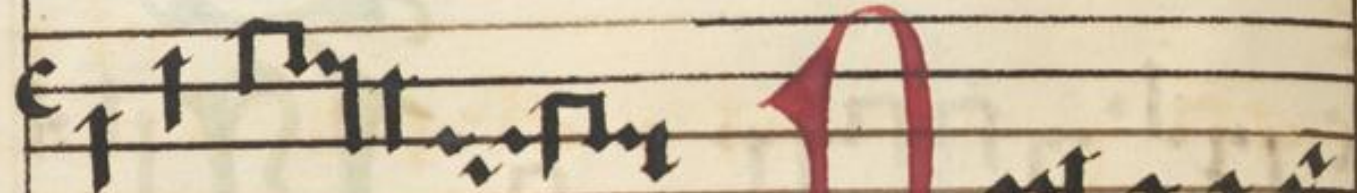
tū in hie ru sa lē **R**e

ple bimur in bo nis do mō tu

a sū cū est tē plū



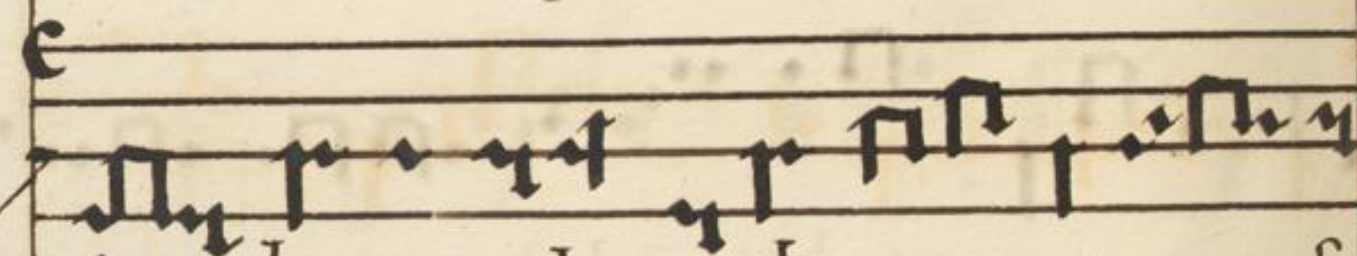
tu um mi ra bi le inæ



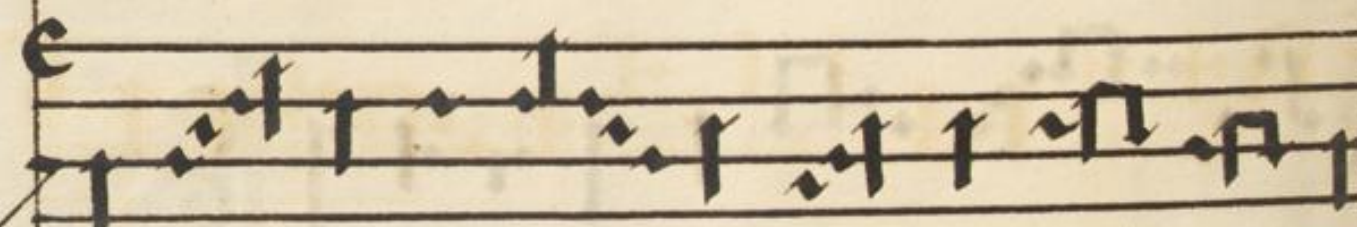
quita te *Off:* **O** mi nede



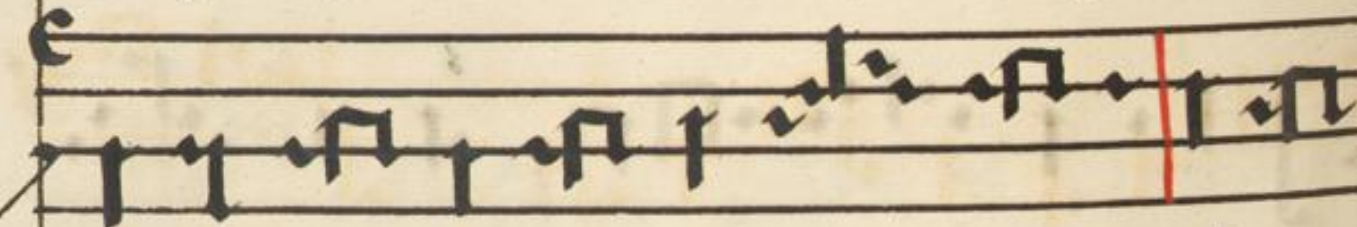
us in simpli ci ta te cordis me



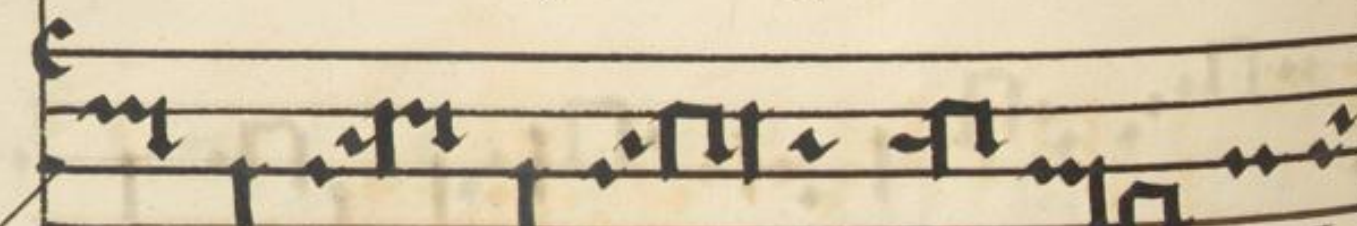
i letus ob tuli u ni uer sa



et po pulū tu um qui re per tus est



ui di cū ingen ti gau di o deus



if ra hel custo di hanc uolū

ta tē alle

ta tē alle

O m̄ n̄ i a

lu ia **co:** o m̄ n̄ me a do m̄ n̄

o ra ti o nis uo ca bi tur di cit

o ra ti o nis uo ca bi tur di cit

dōi nus in e a om nis q̄ petit

dōi nus in e a om nis q̄ petit

ac cipit et qui querit inue nit et pul

ac cipit et qui querit inue nit et pul

san ti a pe ri e tur alle lu

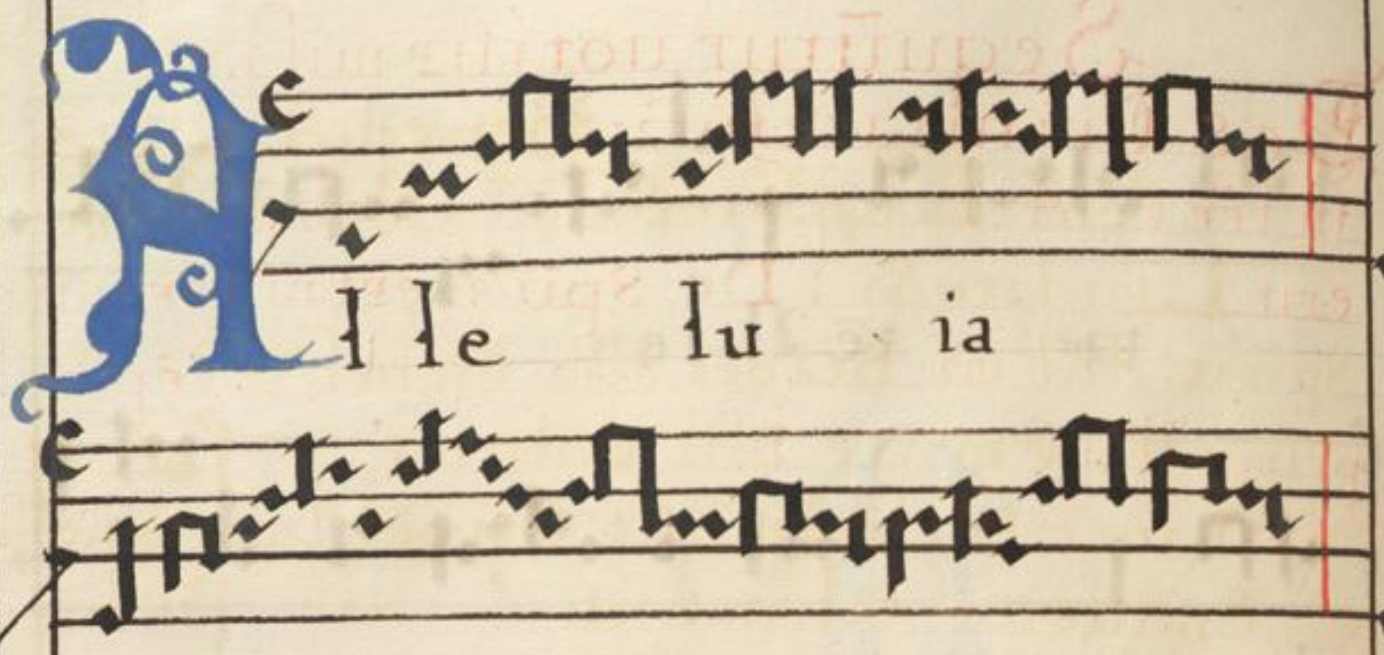
san ti a pe ri e tur alle lu

ia alle lu ia

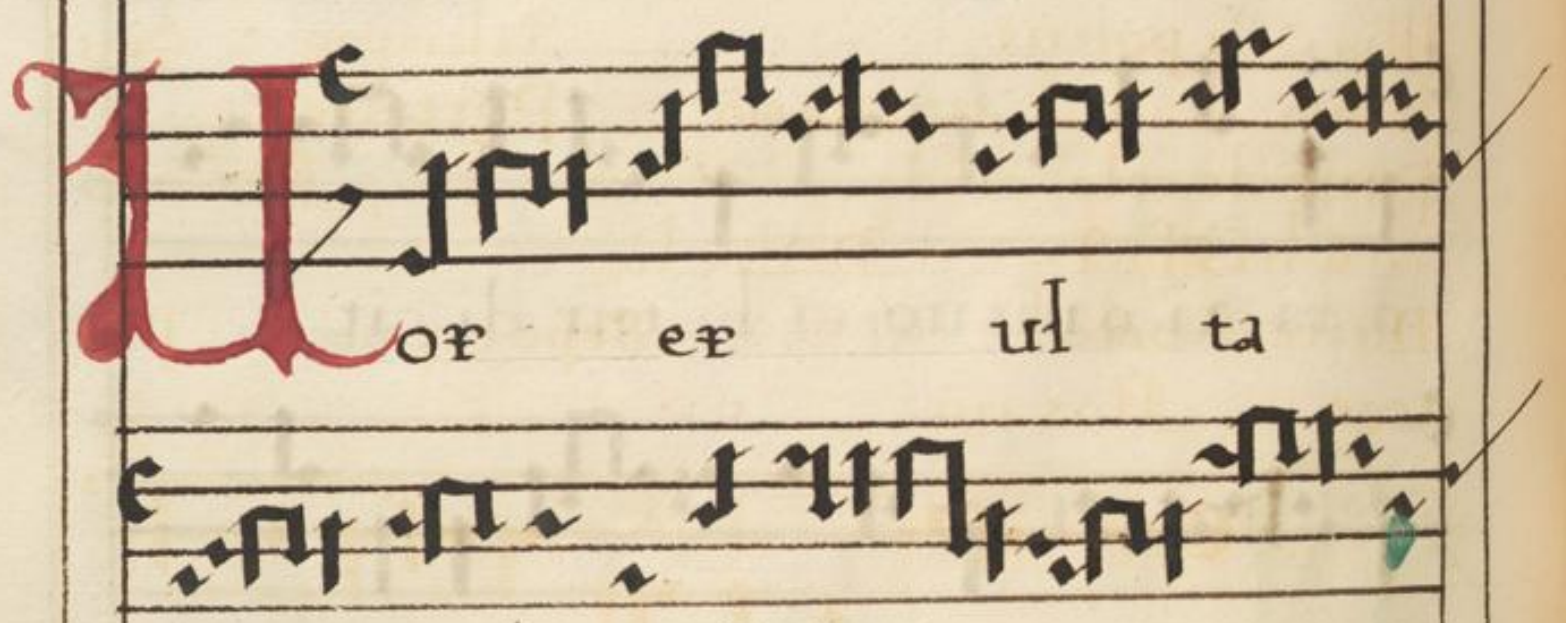
ia alle lu ia

*Tempore
paschali
primū*

Alle lu-ia

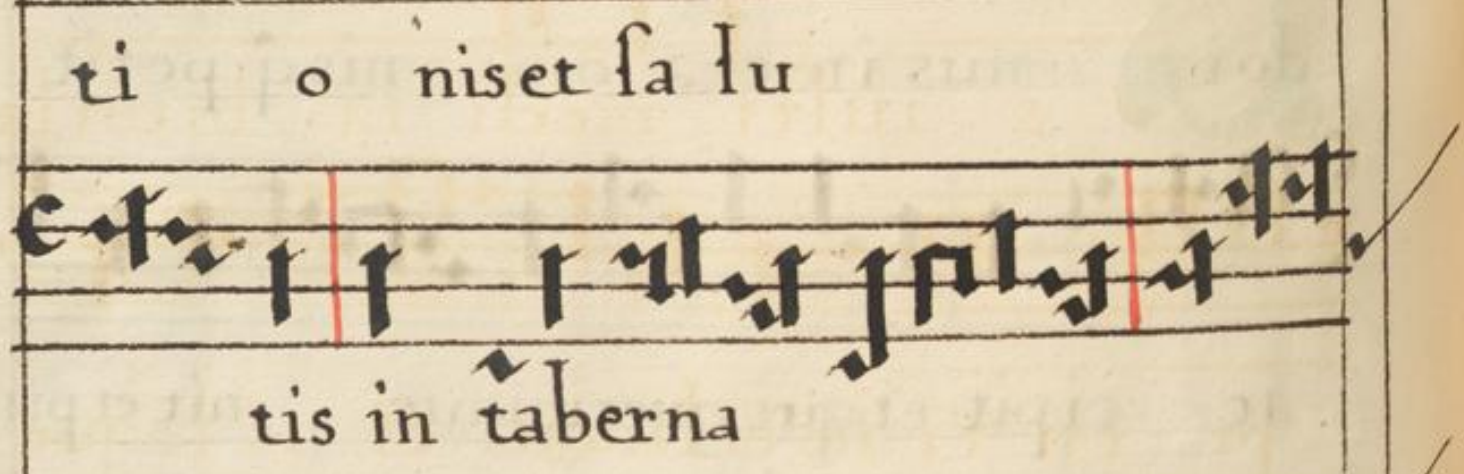


Uor ee ul ta

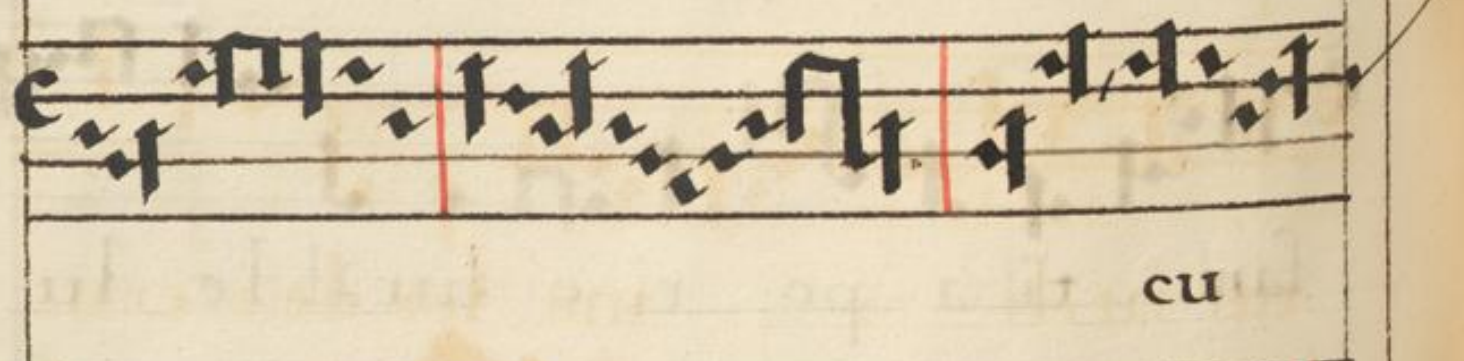


ti o niset sa lu

tis in taberna



cu



lis iusto ru

