

# **Badische Landesbibliothek Karlsruhe**

**Digitale Sammlung der Badischen Landesbibliothek Karlsruhe**

## **[Hs.: 11]tes Quartett für zwey Violinen, Bratsche und Violoncello**

**Onslow, Georges**

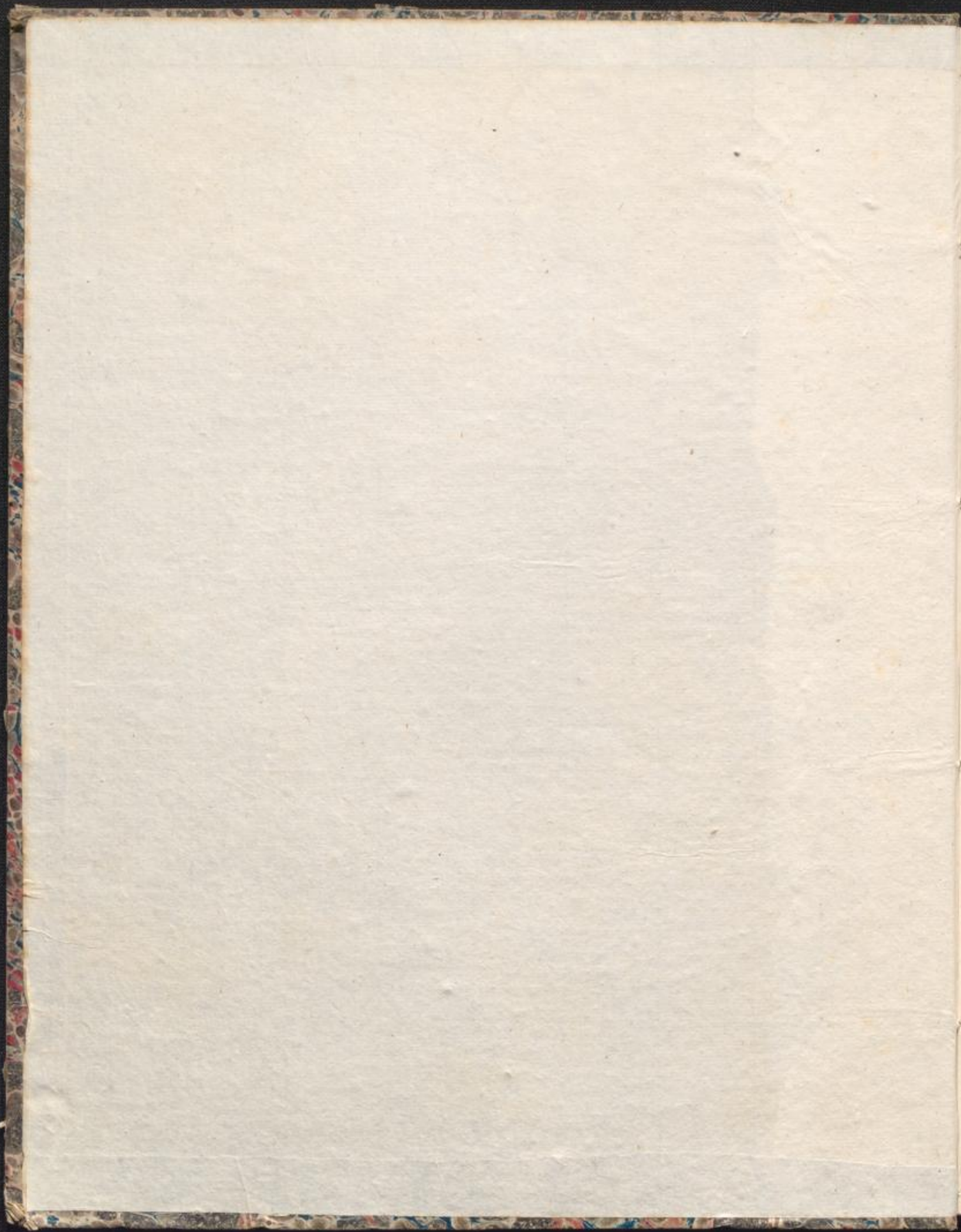
**Wien, 1818**

Violoncello

[urn:nbn:de:bsz:31-161630](https://nbn-resolving.org/urn:nbn:de:bsz:31-161630)

*Quatuors.*  
*Violoncello.*

---



*a*  
*No. 8.*

VIOLONCELLO.

Allegro maestoso e espressivo.

QUARTETTO. II.

*f* *pp* *cres. f* *Dim.* *Rf* *P*  
*Rf* *Mf*  
*Dim.* *pp* *cres. f* *FF*  
*p*  
*cres. cen do f FF*  
*p* *pp* *f* *p*  
*Dim.* *pp*  
*f*  
*Pleggiere.*  
*f* *pp* *FF*  
*Mf* *FF*

S:u:C: 2822.

VIOLONCELLO.

The musical score for Violoncello consists of 12 staves. The first staff begins with a melodic line in bass clef, marked *pp* and *cres.*, with the word "do" written below. The second staff continues the melody, marked *sempre.*, *f*, *pp*, *cres. f*, and *Dim.*. The third staff is marked *Sotto voce.* and contains a more rhythmic passage with *Rf* and *p* markings. The fourth staff continues with *Rf*, *Mf*, *Dim.*, and *pp*. The fifth and sixth staves feature a melodic line with *f* and *ff* markings. The seventh staff is marked *cres.*, *f*, and *ff*. The eighth staff has *f*, *p*, and *pp* markings. The ninth staff is marked *Solo.* and *p*. The tenth staff has *ff* markings. The eleventh staff has *p* markings. The twelfth staff concludes with *pp*, *Smorz.*, *ppp*, and *ppp* markings.

S.u.C:2822.

VIOLONCELLO.

Air de Danse des Montagnes d'Auvergne.

MENUETTO.  
Allegro.

Musical score for Menuetto in 3/4 time. The piece begins with a dynamic of *f* and includes markings for *p*, *ff*, and *pp*. A *cres.* marking is present. The tempo is *Allegro*. The score includes several measures with fingerings (1, 2, 3, 4, 5) and articulation marks. A section is marked *P Leggiere*. The piece concludes with a double bar line and the initials *M.D.C.*

ANDANTE.  
ConVariazioni.

Musical score for Andante with variations in 2/4 time. The tempo is *Andante*. The piece starts with a dynamic of *p* and includes markings for *f* and *Dim. P*. It features several variations, with the first variation labeled *Var. 1.* The score includes fingerings (1, 2) and articulation marks. The piece concludes with a double bar line and a dynamic of *f*.

VIOLONCELLO.

The musical score for Violoncello consists of the following sections and markings:

- First System:** Bass clef, 7/8 time signature. Dynamic markings: *F*, *p*, *F*, *p*.
- Var. 2:** Bass clef, 2/4 time signature. Dynamic marking: *p*.
- Second System:** Bass clef, 7/8 time signature. Dynamic markings: *FF*, *Dim.*, *p*.
- Var. 3:** Bass clef, 2/4 time signature. Dynamic marking: *p*. Includes first and second endings.
- Third System:** Bass clef, 7/8 time signature. Dynamic markings: *cres.*, *F*, *Dim.*, *p*, *FF*.
- Fourth System:** Bass clef, 7/8 time signature. Dynamic markings: *Dim.*, *p*.
- Var. 4:** Bass clef, 2/4 time signature. Dynamic markings: *p*, *Fz*, *Fz*.
- Fifth System:** Treble clef, 7/8 time signature. Dynamic markings: *Fz*, *Fz*.
- Sixth System:** Treble clef, 7/8 time signature. Dynamic markings: *FF*, *p*.
- Seventh System:** Bass clef, 7/8 time signature. Dynamic markings: *cres.*, *FF*.
- Eighth System:** Bass clef, 7/8 time signature. Dynamic markings: *p*, *cres.*, *F*.
- Ninth System:** Bass clef, 7/8 time signature. Dynamic markings: *cres. sempre.*, *FF*, *Dim.*, *p*.
- Tenth System:** Bass clef, 7/8 time signature. Dynamic markings: *F*, *pp*, *Dim.*, *p*.
- Eleventh System:** Bass clef, 7/8 time signature. Dynamic markings: *cres.*, *F*, *Dim.*, *p*, *pp*, *ppp*.

At the bottom of the page, the number "Sta. C. 2822" is printed.



FINALE. *Allegretto.*  $\text{B}_5 \frac{6}{8}$

*f* *p*

*f* *fz* *fz* *fz* *fz* *f*

*p* *f*

*Sotto voce*  
*p Stacc.*

*f*

*pp* *p* *f*

*Dim.*

*p* *f* *p*

*f* *p* *fz* *fz* *fz* *fz*

*f* *p*

*Dolcissimo.* *ff*

Sta: C: 2822.

VOLONCELLO.

Tempo I<sup>mo</sup>  
Ritar. poco.

FF

F

FF

5

PP

F

PP

cres.

F

FF

F P Fz Fz Fz Fz

8

F

PP

cres.

F

S:u:C:2822. ...

