

Badische Landesbibliothek Karlsruhe

Digitale Sammlung der Badischen Landesbibliothek Karlsruhe

La fiancée

Auber, Daniel-François-Esprit

Paris, [1829]

Akt II

[urn:nbn:de:bsz:31-231797](https://nbn-resolving.org/urn:nbn:de:bsz:31-231797)

2^{me} ACTE.

N^o 7. *Allegretto.* *ff* *pizzicato.*

arco *ff* *pizzicato.*

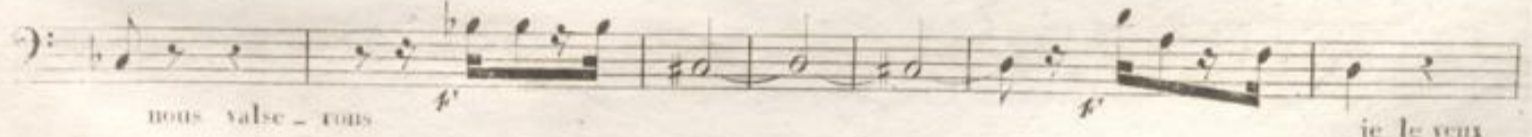
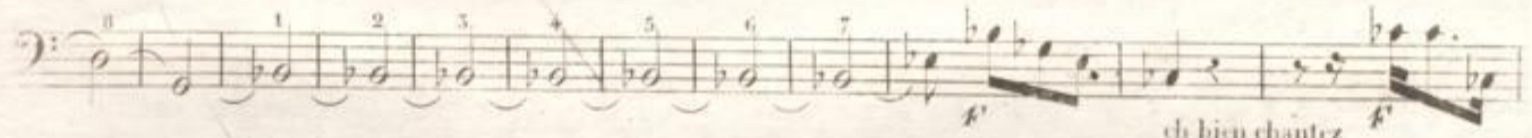
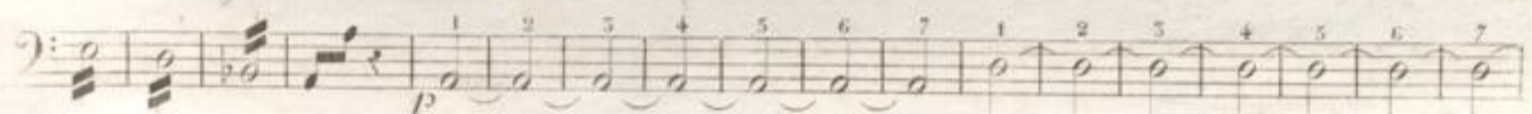
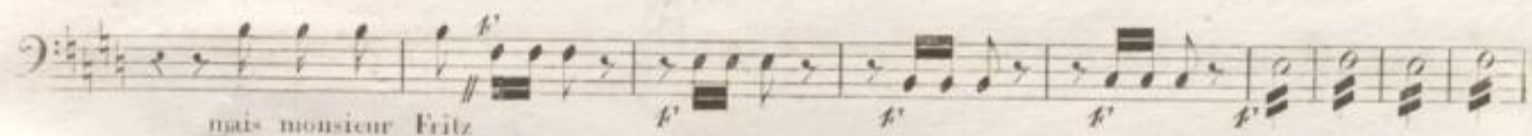
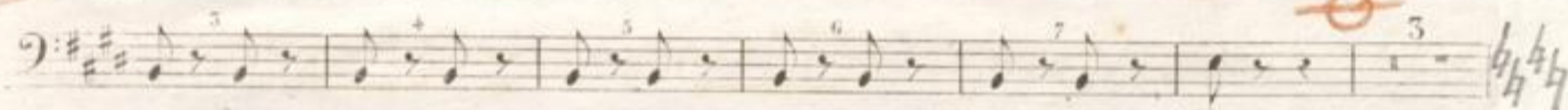
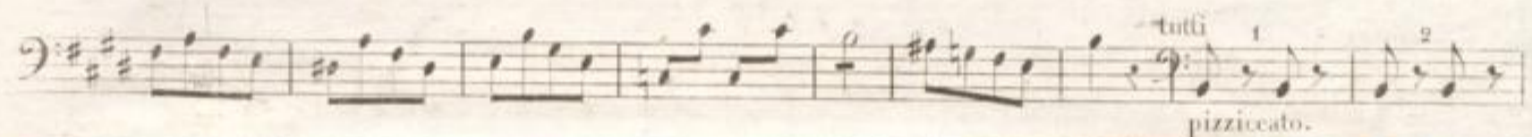
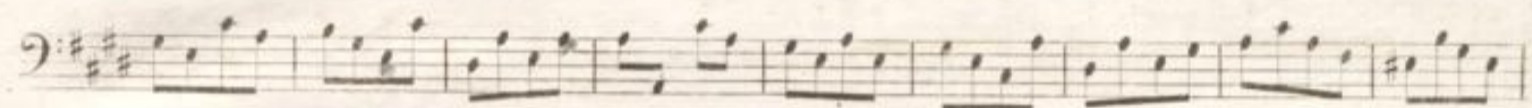
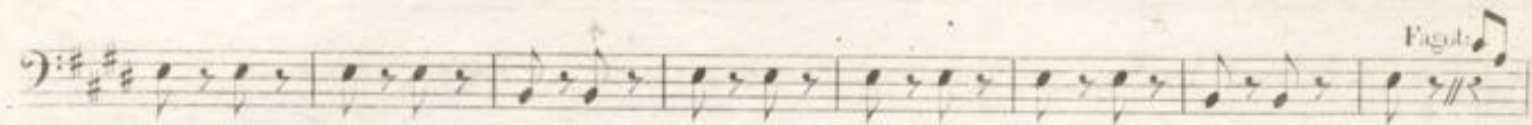
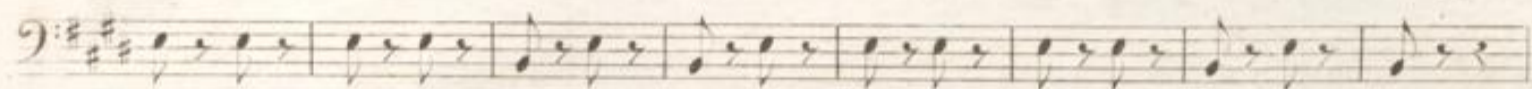
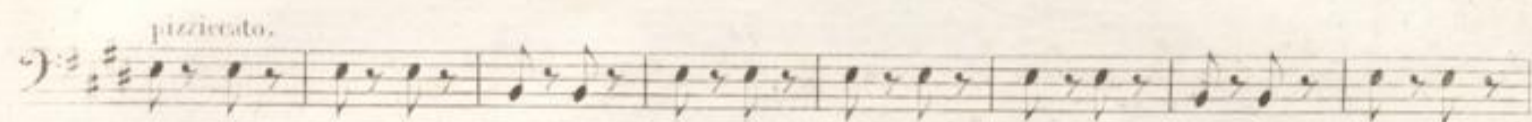
ff *arco* *pizzic:*

arco. *ff* *pizzic:* *arco.* *ff*

pizzic:

ff *arco.*

tutti *p* *arco.*



22 All.^{mo}

BASSI.

5 §
pp

pp

p

ff

ff D.C. §

3^{me} Couplet *p*

p

pp

Musical score for Bass, featuring vocal lines and piano accompaniment. The score includes various dynamics such as *ff*, *p*, *pp*, and *tutti*. It also contains tempo markings like *Allegro* and *Allegro*, and performance instructions such as *unis:*, *pizzic*, and *D.C.*. The lyrics "non vrai ment madame" and "en ce moment" are visible. The score is written in bass clef with a key signature of one sharp (F#) and a time signature of 2/4.

Allegretto.

ff *ff*

p pizzicato.

arco.

1 2 3 4 5 6 7 1 2 3 4 5 6 7 8 9

Allegro non troppo à Monsieur de Saldorf mais en attendant

N° 8.

p

pizzic:

vedle.

arco

G.B. ton a ni

BASSE.

Je m'en vais écouter

Canto.

Andante.

no. 9. *p*

p le conseil

p sui-va

p

p

p

p

p

p

p

p

p

p

p

p

p

p

Andante.

(Coupure, allez au signe ⊕ page 27.)

Allegro.

dans un ménage

- tant en l'acceptant de son mari

unis:

mezzo-forte

714.

Handwritten musical notation on a single staff, featuring a series of notes with slurs and accents. The notation includes dynamic markings such as *f* and *f'*.

Handwritten musical notation on a single staff, continuing the piece with various note values and slurs.

Handwritten musical notation for a grand staff (treble and bass clefs). The bass clef part includes a *p* dynamic marking and a '6' above the staff.

Handwritten musical notation for a grand staff, showing melodic lines in both hands with slurs and ties.

Handwritten musical notation for a grand staff, featuring a variety of note values and rests.

Handwritten musical notation for a grand staff, consisting of a series of chords in the upper hand and a corresponding bass line in the lower hand.

Handwritten musical notation for a grand staff, with numbered measures (8-12) and a final measure with a '5' above it.

Handwritten musical notation on a single staff, similar to the first system, with slurs and accents.

Handwritten musical notation on a single staff, concluding the piece with a *f* dynamic marking.

Musical score for Bass, measures 1-14. The score consists of six staves. The first staff is a single bass line with fingerings 1-8. The second and third staves are a grand staff with piano (pp) and forte (ff) dynamics. The fourth and fifth staves are a grand staff with piano (pp) and forte (ff) dynamics. The sixth staff is a single bass line with fingerings 1-8 and rests.

Allegro non troppo .

ENTR'ACTE .

Musical score for Bass, measures 15-24. The score consists of six staves. The first staff is a grand staff with piano (pp), forte (f), and piano (p) dynamics. The second staff is a grand staff with piano (f) and forte (f) dynamics. The third staff is a single bass line with piano (fz) and forte (f) dynamics. The fourth staff is a single bass line with piano (fz) and forte (f) dynamics. The fifth and sixth staves are single bass lines with piano (fz) and forte (f) dynamics.