

Badische Landesbibliothek Karlsruhe

Digitale Sammlung der Badischen Landesbibliothek Karlsruhe

Troisième symphonie à grand orchestre

Spohr, Louis

Berlin, [1828]

Violine I [hs. 2. Exemplar]

[urn:nbn:de:bsz:31-231234](https://nbn-resolving.org/urn:nbn:de:bsz:31-231234)

3^{me} Sinfonie.

par

L. Spohr.

Violino. 1^{mo}

gme
Sinfonie. Op 78 *Violino 1^{mo}*

Andante grave. *1.*

f_z *dim:* *pp* *5.*

f_z *p* *f_z* *p* *f_z* *p* *f_z*

f_z

dim:

Allegro. *pp*

dim

pp

cres: *mf_z* *cres:* *f_z*

cres: = = = f_z

f_z

f_z

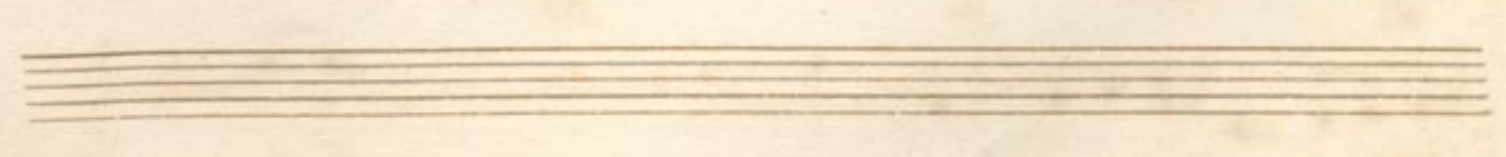
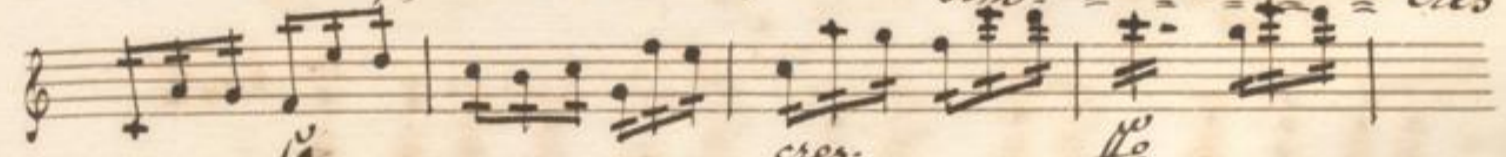
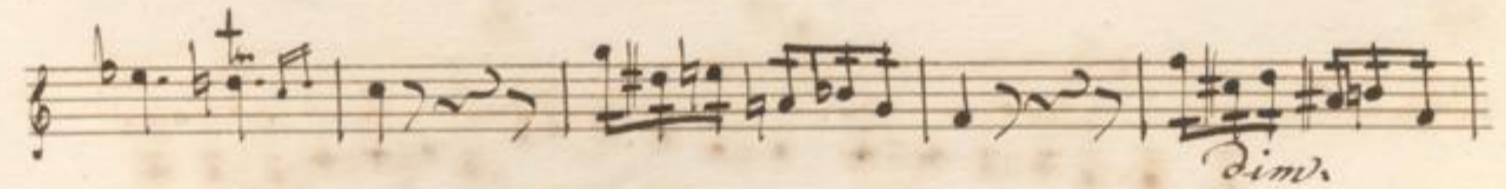
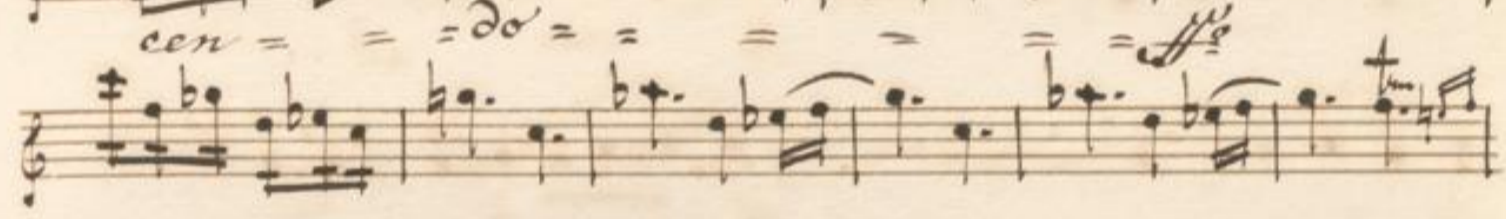
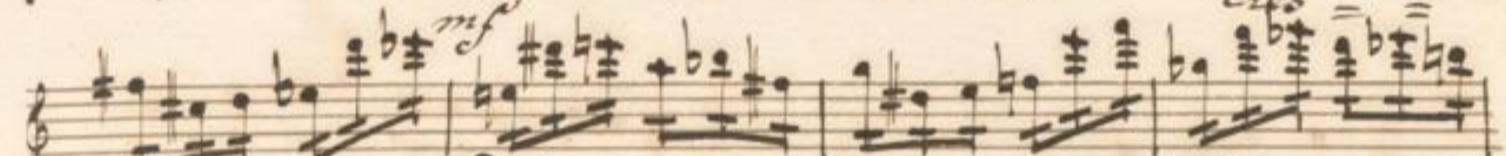
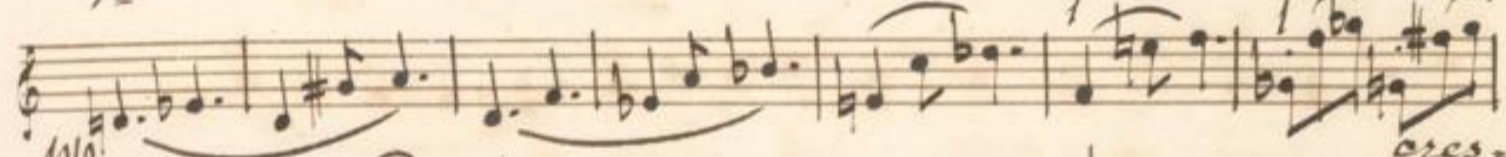
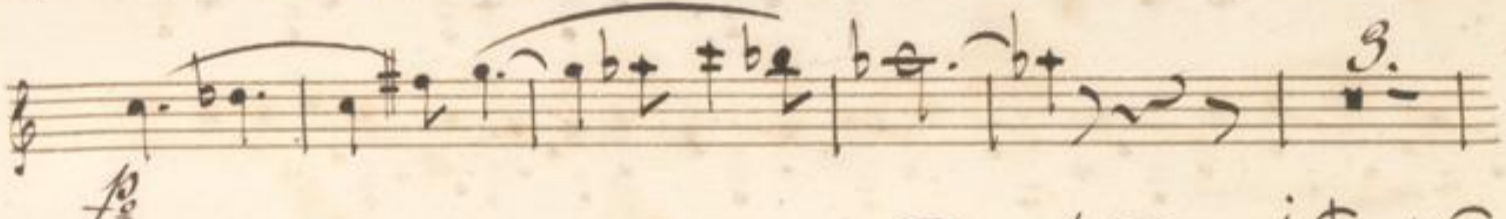
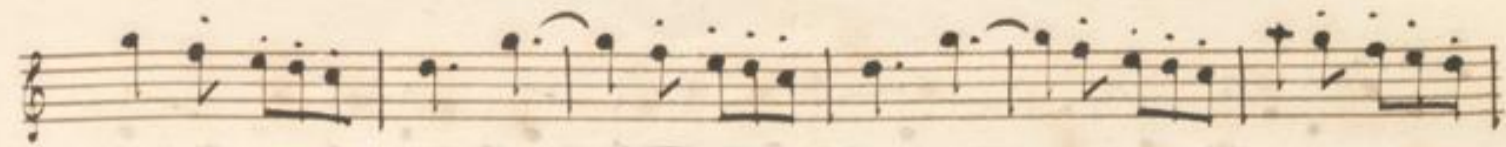
f_z

A handwritten musical score on 12 staves. The notation includes treble clefs, a key signature of two flats (B-flat and E-flat), and a common time signature. The score features complex rhythmic patterns, including sixteenth and thirty-second notes, and rests. Dynamic markings such as *dim.*, *fz*, *pp*, *fz*, *fz*, *pp*, and *fz* are present. There are also some handwritten annotations, including a circled 'x' and a circled '3' above notes. The manuscript shows signs of age, with some ink bleed-through and a large flourish at the bottom right.

Handwritten musical score on ten staves. The notation includes various dynamics such as *f*, *ff*, *cres.*, *dim.*, *pp*, and *arco.*. The score features complex rhythmic patterns, including sixteenth and thirty-second notes, and rests. There are also numerical markings (1-10) and some specific performance instructions like *arco.* and *pp*.

Handwritten musical score on ten staves. The notation includes various dynamics such as *fz*, *Dim.*, *mf*, *fz*, *cres.*, and *bis*. The score features complex rhythmic patterns, including sixteenth and thirty-second notes, and rests. The key signature is B-flat major (two flats). The manuscript shows signs of age, with some ink bleed-through and slight discoloration.

Handwritten musical score on ten staves. The notation includes various rhythmic values, accidentals, and dynamic markings. The first staff begins with a *p* dynamic. The second staff has a *pp* marking. The third and fourth staves feature *fz* markings. The fifth staff has a *f* marking. The sixth staff includes a *pp* marking. The seventh staff has a *fz* marking. The eighth staff has a *fz* marking. The ninth staff has a *fz* marking and a *cres.* marking. The tenth staff has a *fz* marking. The score concludes with a *ff* marking.



Larghetto

Sopra una Corda

Handwritten musical score on ten staves. The notation includes various notes, rests, and dynamic markings such as *f*, *ff*, *pp*, *cres.*, and *dim.*. The score is written in a historical style with a treble clef and a key signature of one sharp (F#).

Key markings and dynamics include:

- Staff 1: *f*, *ff*, *pp*
- Staff 2: *f*, *ff*, *pp*
- Staff 3: *pp*
- Staff 4: *f*, *pp*
- Staff 5: *f*, *cres.*
- Staff 6: *f*, *dim.*, *f*, *cres.*
- Staff 7: *Sopra una Corda.*, *cres.*, *f*, *dim.*, *pp*
- Staff 8: *cres.*, *f*, *dim.*, *f*
- Staff 9: *f*, *cres.*, *f*, *f*, *f*
- Staff 10: *f*, *dim.*

Scherzo.

Handwritten musical score for a Scherzo, consisting of ten staves. The music is written in a key signature of three flats (B-flat, E-flat, A-flat) and a 6/8 time signature. The score includes various dynamic markings such as *f*, *dim.*, *cres.*, and *fz*. It also features articulation marks like accents and slurs, and first and second endings. The notation includes eighth and sixteenth notes, rests, and chordal structures.

Handwritten musical score for a Trio section. The score consists of ten staves of music. The first staff begins with a treble clef, a key signature of two flats (B-flat and E-flat), and a common time signature. The music is written in a flowing, melodic style with various note values and rests. Dynamic markings include *p/p* (piano/piano), *f* (forte), *cres.* (crescendo), and *dim.* (diminuendo). A section labeled *Trio* begins on the fifth staff, marked with *p/p* and *cres.*. The score concludes with a double bar line and a flourish. Below the main score, there are two empty staves.

Handwritten musical score on 12 staves. The notation includes various musical symbols such as clefs, key signatures (two flats), time signatures, and dynamic markings. The score is annotated with several performance instructions:

- cres.* (crescendo) at the top right of the first staff.
- dim.* (diminuendo) at the top right of the second staff.
- f* (forte) below the third staff.
- fz* (forzando) above the eighth staff.
- p* (piano) below the ninth staff.
- ma* (ritardando) above the eleventh staff.
- da* (ritardando) above the twelfth staff.

The score features a variety of rhythmic patterns, including eighth and sixteenth notes, and rests. There are also some unusual markings, such as a double bar line with a slash through it at the end of the twelfth staff.

Handwritten musical score on eight staves. The notation includes treble clefs, key signatures of two flats, and various musical symbols such as slurs, dynamics (*f*, *dim.*, *cres.*, *f*), and first/second endings. The music is written in a cursive style typical of 18th or 19th-century manuscripts.

Four empty musical staves. The second staff contains a handwritten signature, likely "J. C. Bach", followed by a decorative flourish.

Handwritten musical score for violin and piano, page 14. The score consists of ten staves. The first staff is the violin part, and the second is the piano accompaniment. The music is in a minor key and features various dynamics and articulations.

- Staff 1: Violin part, starting with a *2^a* fingering and *f* dynamic.
- Staff 2: Piano accompaniment, starting with *f* dynamic and *cres.* markings.
- Staff 3: Violin part, continuing the melodic line.
- Staff 4: Piano accompaniment, featuring *dim.* and *f* markings.
- Staff 5: Violin part, with *cres.* markings.
- Staff 6: Piano accompaniment, with *cres.* markings.
- Staff 7: Violin part, with *cres.* markings.
- Staff 8: Piano accompaniment, with *cres.* markings and a triplet of eighth notes.
- Staff 9: Violin part, with *pizz.* and *f* markings.
- Staff 10: Violin part, ending with *arco* marking.

Two empty musical staves at the bottom of the page.

Allegro:

Finale.

f

2.

1.

p.

f

f

pp

Cresc.

1.

1.

1.

1.

1.

f

f

1.

4.

f

Finale

Handwritten musical score on 11 staves. The notation includes various note values, rests, and dynamic markings. The dynamics include *pp*, *f*, and *pp*. There are also markings for *crec* (crescendo) and *cen* (crescendo) with equals signs. The score is written in a single system across 11 staves.

Handwritten musical score on ten staves. The notation includes treble clefs, a key signature of one flat (B-flat), and a time signature of 4/4. The score features various musical notations such as notes, rests, and accidentals. Dynamics include *f* (forte), *pp* (pianissimo), *cres.* (crescendo), and *dim.* (diminuendo). Performance markings include *con = = = do.* and *ma*. The piece concludes with a double bar line and the number 10. A large flourish is present at the bottom right of the page.

A handwritten musical score consisting of 11 staves. The notation includes various note values (quarter, eighth, sixteenth notes), rests, and dynamic markings such as *f* and *ff*. The score is written in a single system across the staves. The first staff begins with a treble clef and a key signature of one flat. The music features complex rhythmic patterns and melodic lines. The final two staves contain multi-measure rests labeled '2.' and '3.' followed by concluding musical phrases.

Handwritten musical score on ten staves. The notation includes treble clefs, various note values (quarter, eighth, sixteenth notes), rests, and accidentals (sharps, flats, naturals). Performance markings include *pp*, *f*, *cres*, and *do.*. Rehearsal or section markers are numbered 1., 2., 3., and 4. The score concludes with a large, decorative flourish.

Handwritten musical score on 12 staves. The notation includes treble clefs, various note values (quarter, eighth, sixteenth notes), rests, and dynamic markings such as *p/po*, *cres:*, and *f*. The music features complex rhythmic patterns and chromatic passages.

Handwritten musical score on ten staves. The notation includes various rhythmic values, accidentals, and dynamic markings. Key annotations include:

- triumm* (triumph) above the second staff.
- ff* (fortissimo) above the first staff.
- ff* (fortissimo) above the sixth staff.
- cres.* (crescendo) above the sixth staff.
- poco a poco stringendo.* (gradually increasing tempo) above the eighth staff.
- sin al fine.* (without the final cadence) written below the eighth staff.
- ff* (fortissimo) above the eighth staff.
- Fine.* written in a large, decorative script at the end of the tenth staff.

