

Badische Landesbibliothek Karlsruhe

Digitale Sammlung der Badischen Landesbibliothek Karlsruhe

Duo concertant pour piano et violon

Benedict, Julius

Mayence [u.a.], [1839]

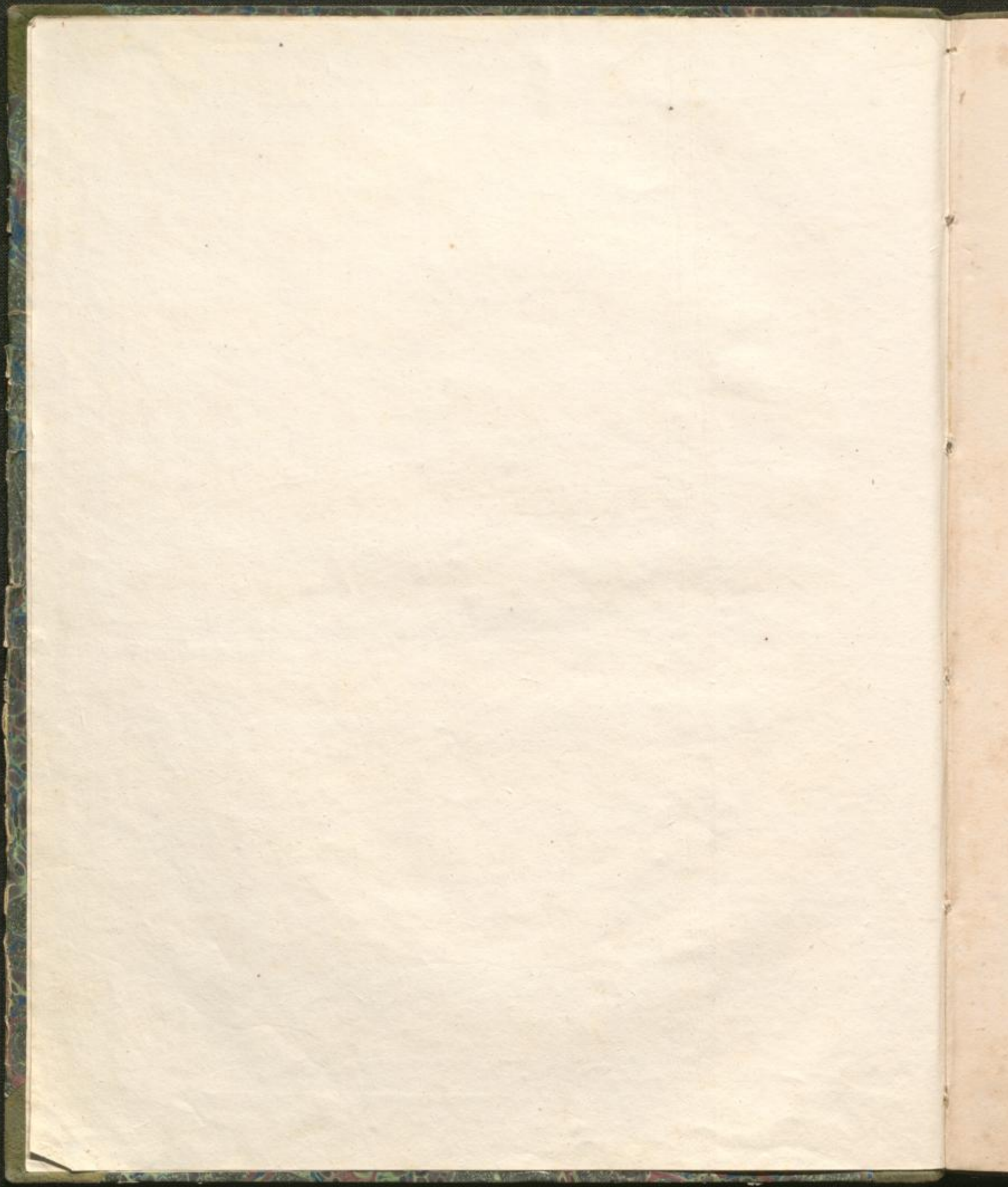
Violine

[urn:nbn:de:bsz:31-232284](https://nbn-resolving.org/urn:nbn:de:bsz:31-232284)

Violon.

1. 1-8.
Domb 1667

1512
1513
1514



DUO CONCERTANT

Pour

Piano et Violon

sur des motifs favoris Ecoisais

composé et dédié

à Monsieur

JENACE MOSCHELES.

J. Benedict et A. Blagrove

N^o 5556

Propriété des Editeurs

Pr. 2 fl 24 kr.

Enregistré aux Archives de l'Union

Mayence et Anvers

Chez les fils de B. Schott

Paris, chez Bernard Latta

Londres, chez Cramer, Addison & Beale

Dépôt général de notre fonds de Musique

à Leipzig, chez G^o Huertel. à Vienne, chez H. F. Müller.

INTRODUZIONE.
quasi
FANTASIA.

Allegro risoluto.

Dim.

ad lib.

Moderato.

3^{me}

P.F.

Stringendo.

Cres.

Cres.

4^{me}

Risoluto.

Forte assai.

4^{me}

TEMA.

Andante con moto.

3^{me}

pp

Cres.

p

pp

Cres.

f

Cres.

p

sf

3^{me}

Cres. molto.

Dim.

pp

VAR. I.

Tempo del Tema.

Pizz.

Arco.

VIOLON.

Pizz. 

VAR. II. *Piu moderato.* 

















5556.

Allegro energico e con fuoco.

VAR. III.

Cres. *p* *f*
 Cres. *p* *f*
 1^{uo} 2^{do}
 Harm. *pp*
 Naturelle. *Dim.* *p*
ff
 Cres. molto - - - cres. *ff*
 Andante flebile. Capriccio. *P.F.*
pp

morendo. *Andante.*
P.F. ad lib.

Allegro con fuoco.

Allegro con fuoco.
P.F.

poco a poco cres. Cres. poco rall.

Allegretto.
FINALE. *sf* *p*

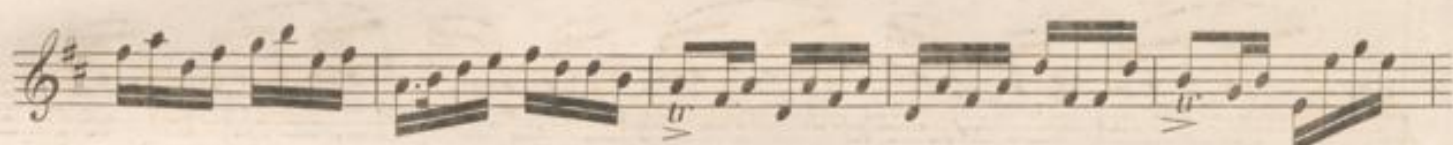
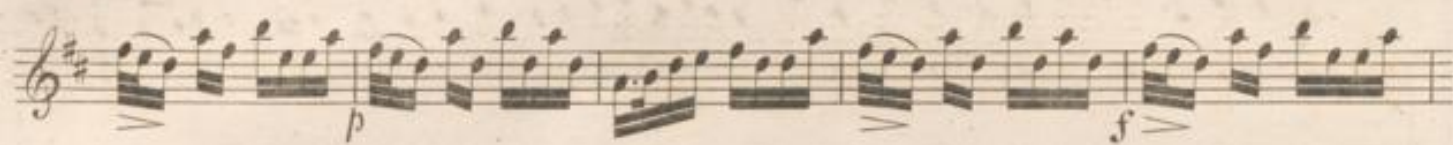
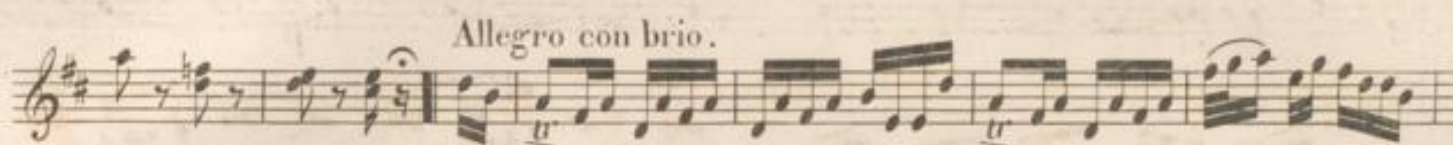
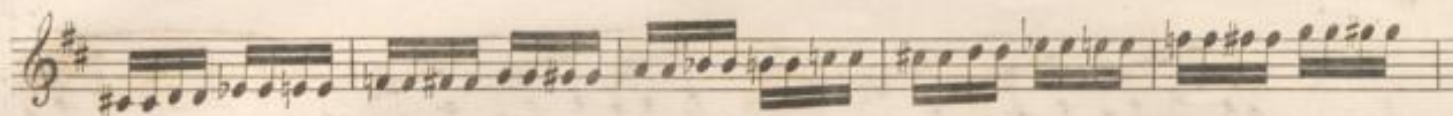
Cres. *pp*

p

Cres. *f*

The page contains ten staves of musical notation for a violin part. The music is written in treble clef with a key signature of two sharps (F# and C#). The notation includes various rhythmic patterns, slurs, and dynamic markings. The dynamics range from *pp* (pianissimo) to *f* (forte). There are also markings for *Cres.* (Crescendo) and *Cres. assai.* (Crescendo assai). The piece concludes with a double bar line and the number 5556.

VIOLON.



Gres.

5556.

FIN.

[Faint, illegible text, possibly bleed-through from the reverse side of the page]

