

# **Badische Landesbibliothek Karlsruhe**

**Digitale Sammlung der Badischen Landesbibliothek Karlsruhe**

## **Beliebte Walzer und Galoppen für das Orchester**

Walzer aus der Feen-Welt - 48tes Werk

**Labitzky, Joseph**

**Prag, [ca. 1839]**

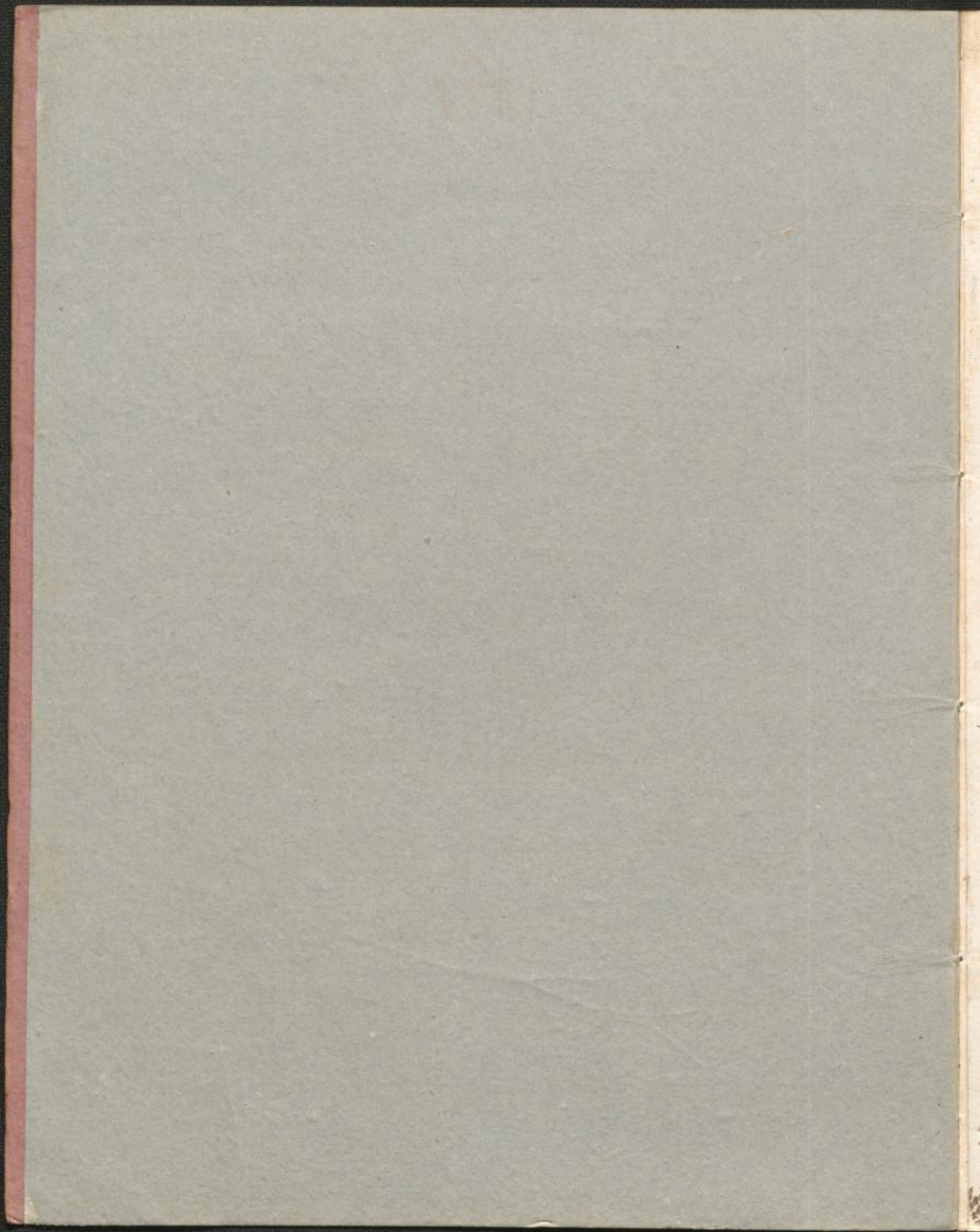
Klarinette II in A

[urn:nbn:de:bsz:31-243147](https://nbn-resolving.org/urn:nbn:de:bsz:31-243147)

Man. D. 3040

Clarinetto II.







Op. 50

CLARINETTO 2<sup>a</sup> in A.

J. Labitzky, Op. 48.

INTRODUZIONE.

Andante.

WALZER. N° 1.

WALZER. N° 2.

WALZER. N° 3.

WALZER. N° 4.



WALZER.  
Nº 5

First system of the Walzer section, starting with a treble clef and a 3/4 time signature. The music begins with a piano (*p*) dynamic. The first staff contains a melodic line with eighth and sixteenth notes. The second staff continues the melody, ending with a forte (*f*) dynamic. The third staff is a bass line with chords and some sixteenth-note patterns, marked with fortissimo (*ff*), *sf*, and *p*. Fingerings '2' are indicated above some notes.

FINALE.

Second system of the Finale section, starting with a treble clef and a 3/4 time signature. The music begins with a forte (*f*) dynamic. The first staff contains a melodic line with various dynamics including fortissimo (*ff*), mezzo-forte (*mf*), and pianissimo (*pp*). The second staff continues the melody with a piano (*p*) dynamic and a *crese.* (crescendo) marking. The third staff is a bass line with chords and sixteenth-note patterns, marked with mezzo-forte (*mf*). The fourth staff continues the bass line with a piano (*p*) dynamic. The fifth staff contains a melodic line with fortissimo (*ff*) dynamics. The sixth staff continues the melody with fortissimo (*ff*) dynamics and includes trills (*tr*) and fingerings '1'. The seventh staff continues the melody with piano (*p*) dynamics and includes trills (*tr*) and fingerings '2'. The eighth staff is a bass line with chords and sixteenth-note patterns, marked with piano (*p*) and including fingerings '2'. The ninth staff continues the bass line with a forte (*f*) dynamic and includes a +6 fingering. The section concludes with a double bar line.

FINE.







