

Badische Landesbibliothek Karlsruhe

Digitale Sammlung der Badischen Landesbibliothek Karlsruhe

An illustrated guide-book to Heidelberg its castle and environs

Schmieder, Ludwig

Heidelberg, 1948

Illustrations

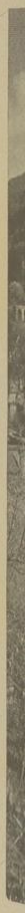
[urn:nbn:de:bsz:31-255219](https://nbn-resolving.org/urn:nbn:de:bsz:31-255219)

ILLUSTRATIONS

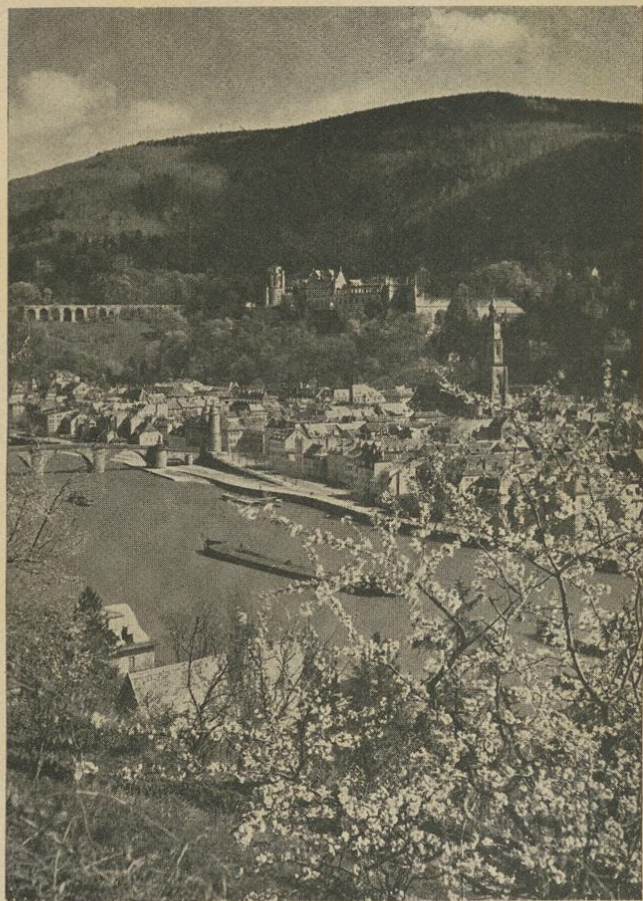
1. View of Heidelberg from the Philosophenweg
2. The Castle and Karl Theodor Bridge
3. View of Old and New University Buildings, Jesuit Church, Weinbrenner Building and Old Arsenal
4. Hortus Palatinus (The Castle Gardens)
(Engraving in Museum of Palatinate)
6. Otto Heinrich, Elder of the Palatinate (Wood-engraving on parchment in Heidelberg Museum of the Palatinate)
7. East front of Castle, Apothecary's Tower, Bell Tower, Ott Heinrich-Building and Hall of Mirrors
8. Castle Courtyard
9. Ott Heinrich-Building
10. The Big Tun
11. Serenade Concert in courtyard of the Castle
12. Festival Plays in the Castle
13. The Hall of Mirrors
14. Castle Courtyard
15. Hotel and Restaurant "Zum Ritter"
16. Church of the Holy Ghost
17. The Old and New University
19. Market Square with Hercules Fountain, Town Hall, former the "Prinz Carl" Hotel
20. Corn Market with statue of Virgin Mary
21. The Castle in Winter
22. View of Neckargemund
23. Schwetzingen - Palace Garden
24. Castle-crowned Neckarsteinach
- Mannheim - Architectural Monuments of the Time the Electors resided in Mannheim
- Karlsruhe - The Fan-Shaped City, Map of the Town around 1750

ILLUSTRATIONS

Faint, illegible text, likely bleed-through from the reverse side of the page.

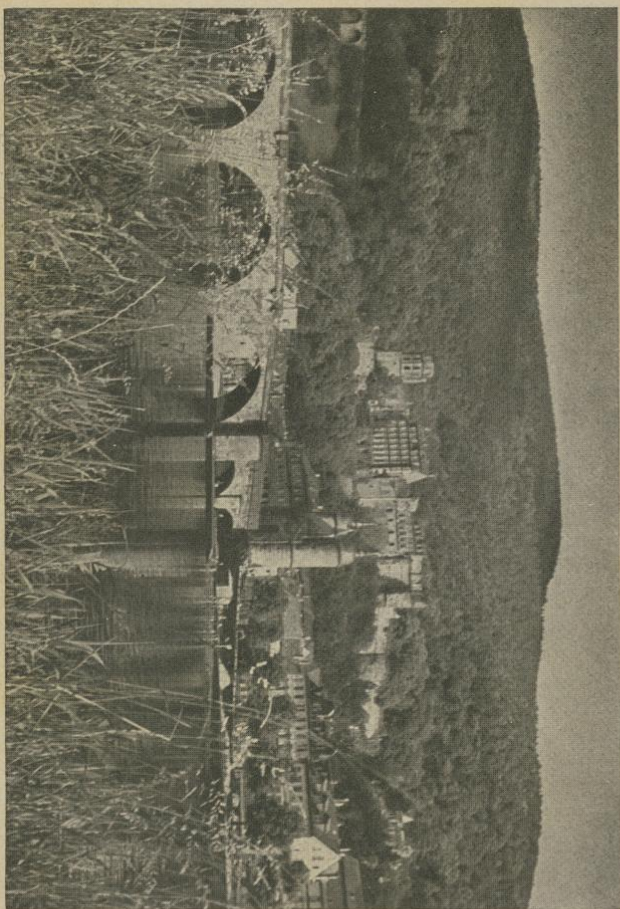


View



View of Heidelberg from the Philosophenweg

Illustration No. 1



The Castle and Karl Theodor Bridge

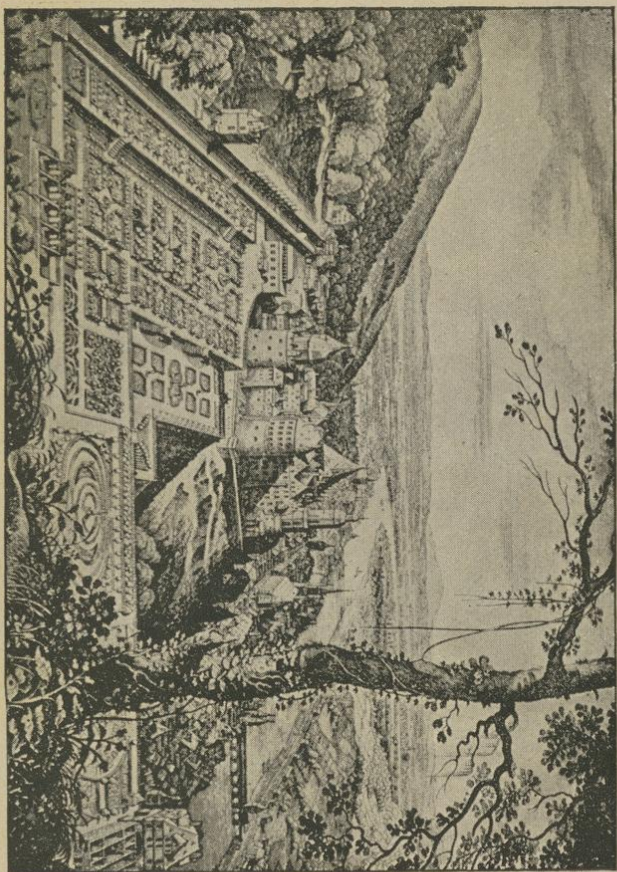
Illustration No. 2

View
New
Left:
and



*View of the Old and the
New University Buildings
Left: the Jesuit Church; below: the Weinbrenner Building
and the Old Arsenal*

Illustration No. 3

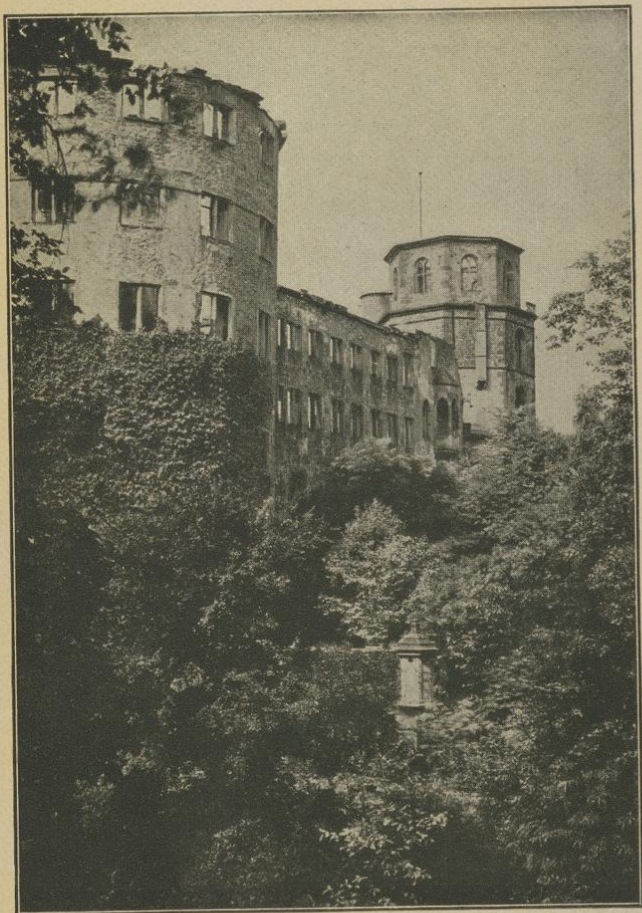


*Hortus Palatinus (The Castle Gardens), by M. Merian.
Engraving in the Museum of the Palatinate*

Illustration No. 4



Otto Heinrich, Elder of the Palatinate *Illustration No. 6*
(Wood-engraving on parchment in the Heidelberg Museum
of the Palatinate)



East front of the Castle.

Left: Apothecary's Tower, Right: the Bell Tower, and, connecting the two, Ott Heinrich-Building and the Hall of Mirrors

Illustration No. 7



Castle Courtyard

Illustration No. 8



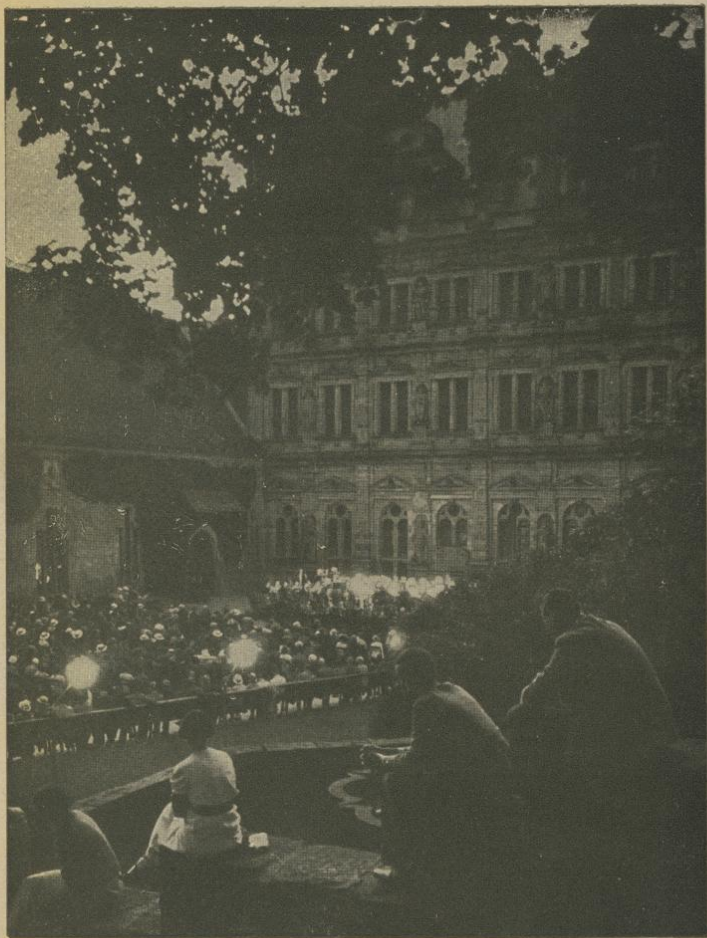
Ott Heinrich-Building

Illustration No. 9



The Big Tun

Illustration No. 10



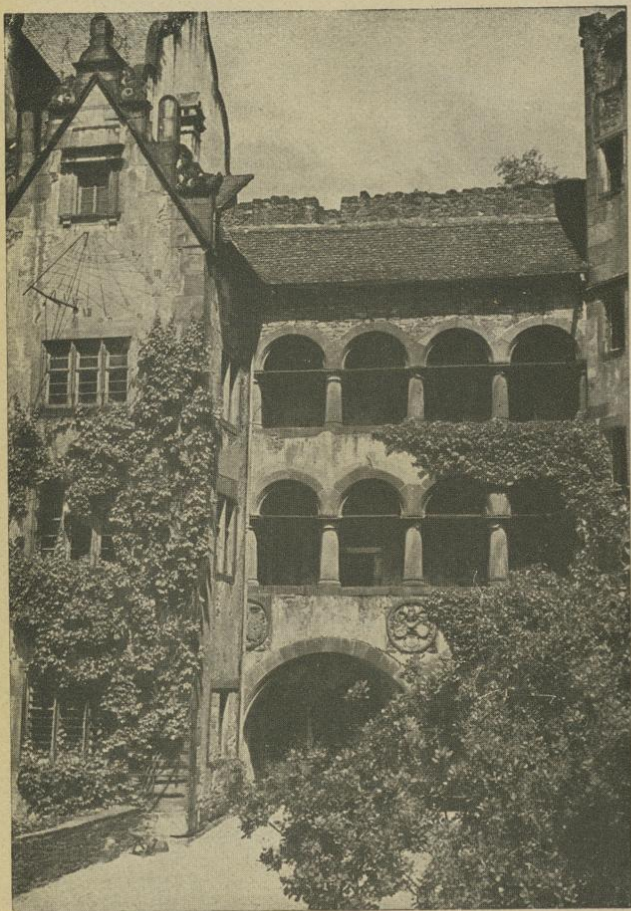
Serenade Concert in the courtyard of the Castle

Illustration No. 11



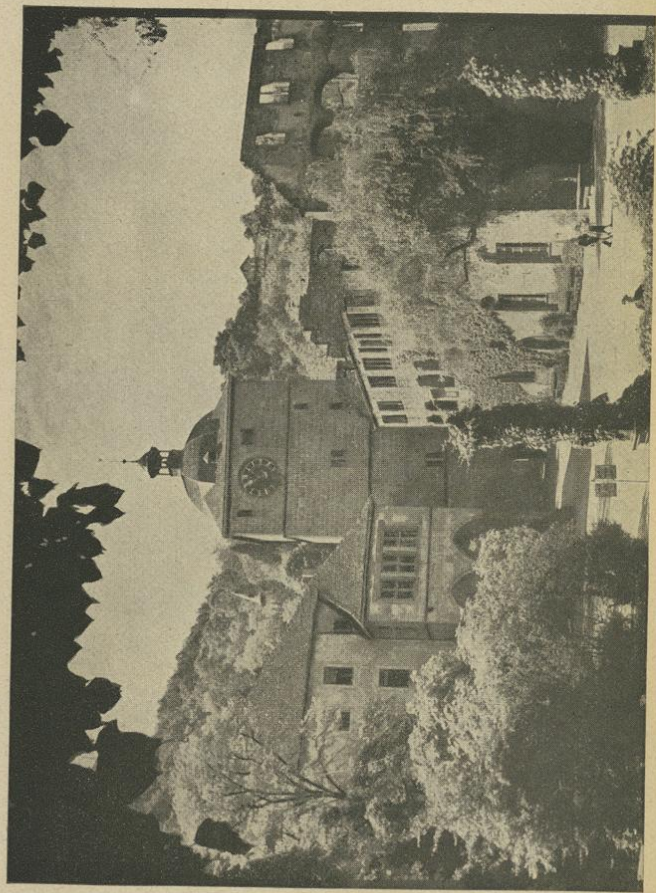
Festival Plays in the Castle

Illustration No. 12



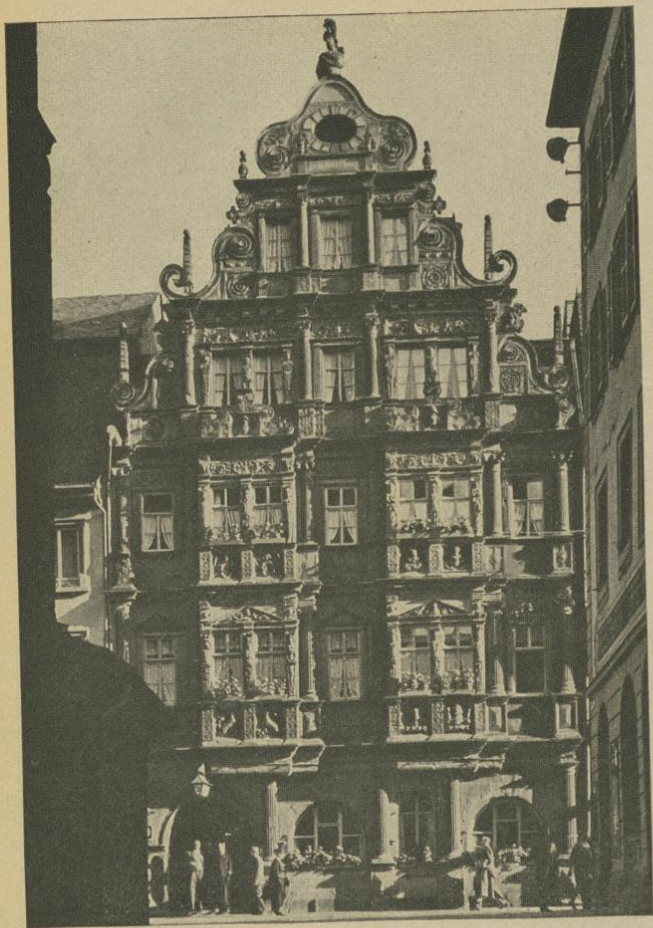
The Hall of Mirrors

Illustration No. 13



Castle Courtyard

Illustration No. 14



*Hotel and Restaurant "Zum Ritter"
The "Knight of St. George"
(Hotel zum Ritter)*

Illustration No. 15



Church of the Holy Ghost

Illustration No. 16

The Old and New University

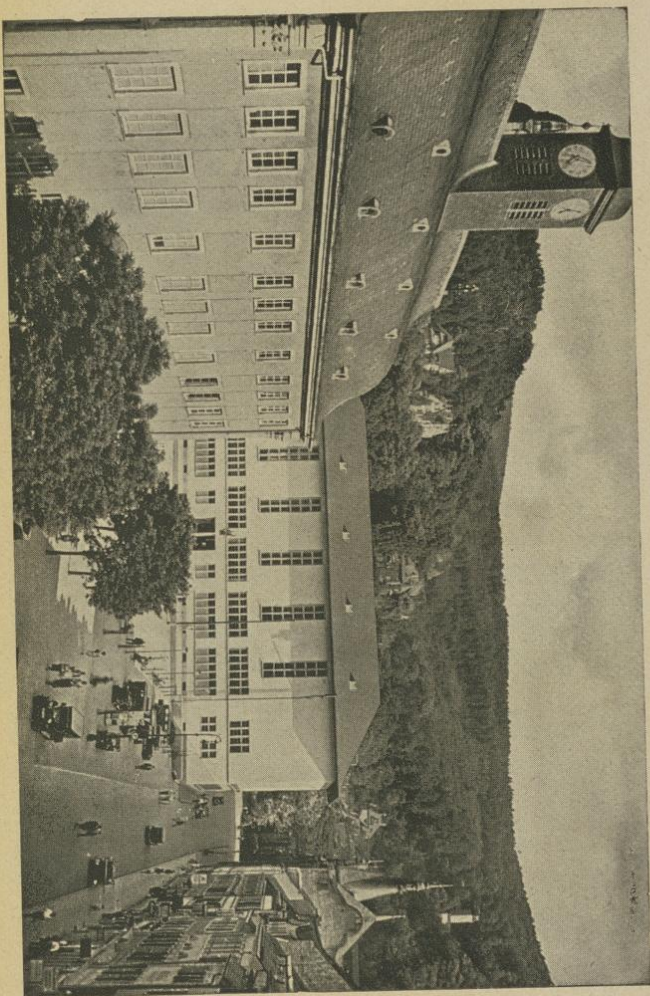


Illustration No. 17

Markt
Left:



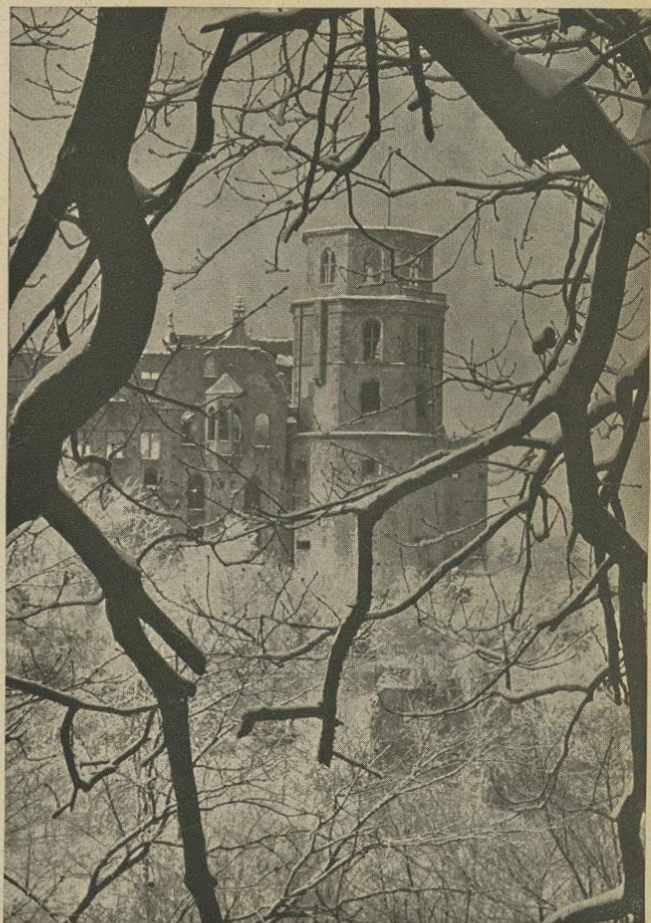
Market Square with Hercules Fountain
Left: Town Hall; Right: formerly the "Prinz Carl" Hotel

Illustration No. 19



*Corn Market with Statue; of the Virgin Mary
and view of the Castle*

Illustration No. 20



The Castle in Winter

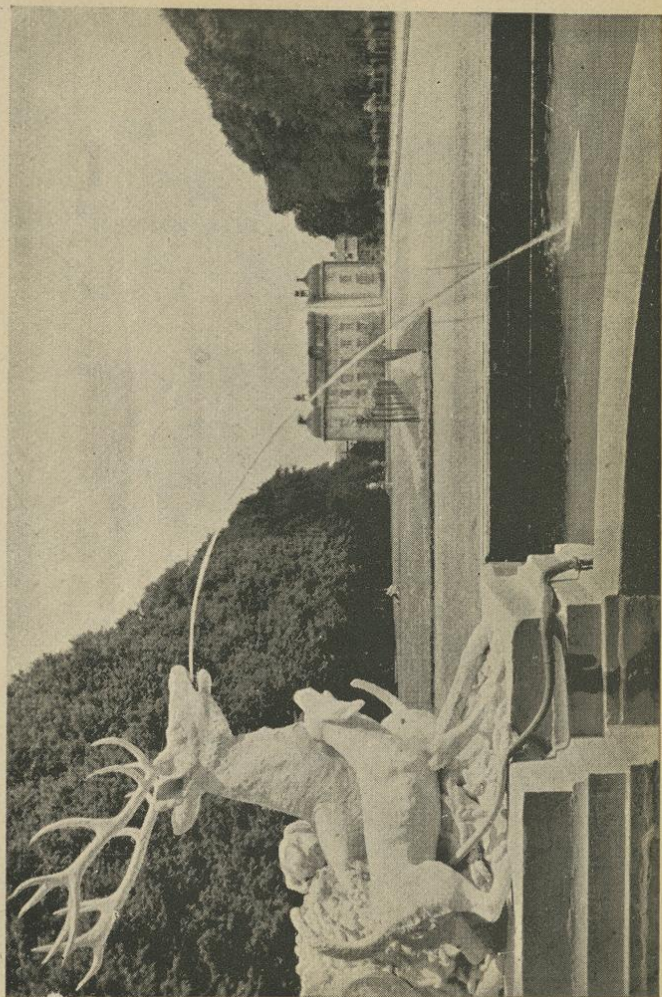
Illustration No. 21

No. 20

View of Neckargemünd



Illustration No. 22



Schwetzingen: Palace-Garden

Castle-crowned Neckarsteinach

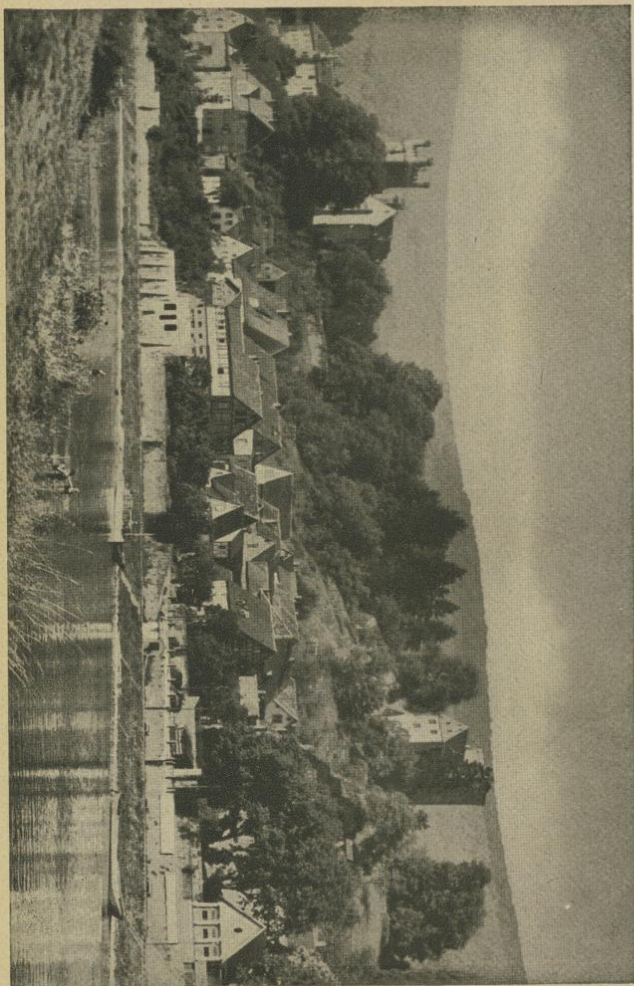
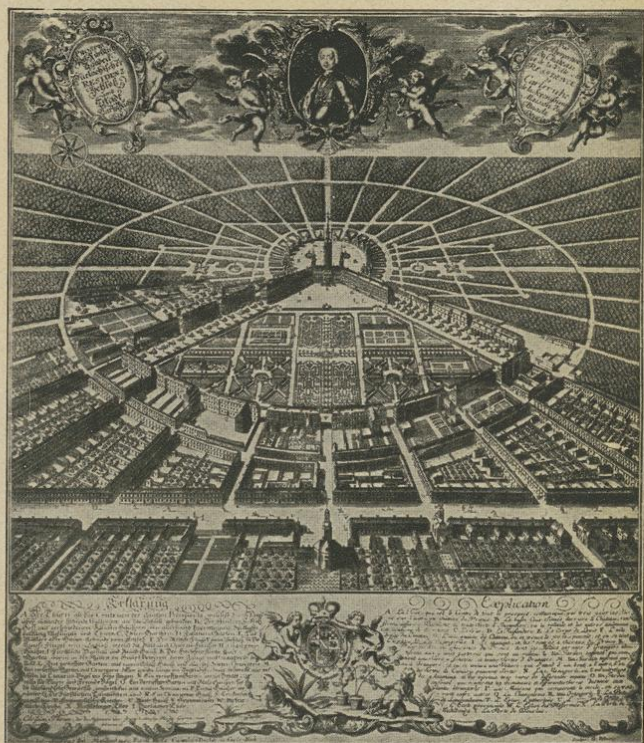


Illustration No. 24



KARLSRUHE - The Fan-Shaped City, Map of the Town around
1750

(Photograph: „Archiv Verkehrsverein“.)



Architectural Monuments of the Time the Electors Resided in Mannheim: Old City Hall and Lower Parochial Church with Middle Tower (1700-1711) and Marked Well by Peter and Johann Matthäus van den Branden (1719-1771). (Photograph: „Städt. Bildarchiv“.)