

# **Badische Landesbibliothek Karlsruhe**

**Digitale Sammlung der Badischen Landesbibliothek Karlsruhe**

## **An illustrated guide-book to Heidelberg its castle and environs**

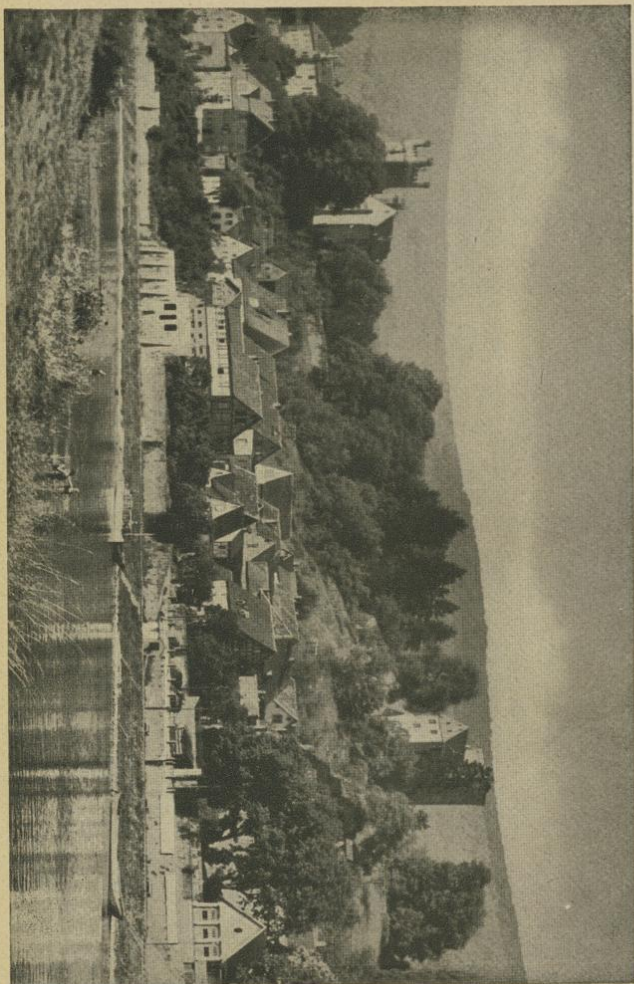
**Schmieder, Ludwig**

**Heidelberg, 1948**

Illustration: Castle-crowned Neckarsteinach

[urn:nbn:de:bsz:31-255219](https://nbn-resolving.org/urn:nbn:de:bsz:31-255219)

*Castle-crowned Neckarsteinach*



*Illustration No. 24*