

Badische Landesbibliothek Karlsruhe

Digitale Sammlung der Badischen Landesbibliothek Karlsruhe

Sammlung von Hochbauten der Grossh. Badischen Eisenbahn

enthaltend Bahnhöfe, Stationen und Bahnwartshäuser, Ansichten, Schnitte
und Grundrisse

Verschiedene Hochbauten der Bad. Tauberthalbahn

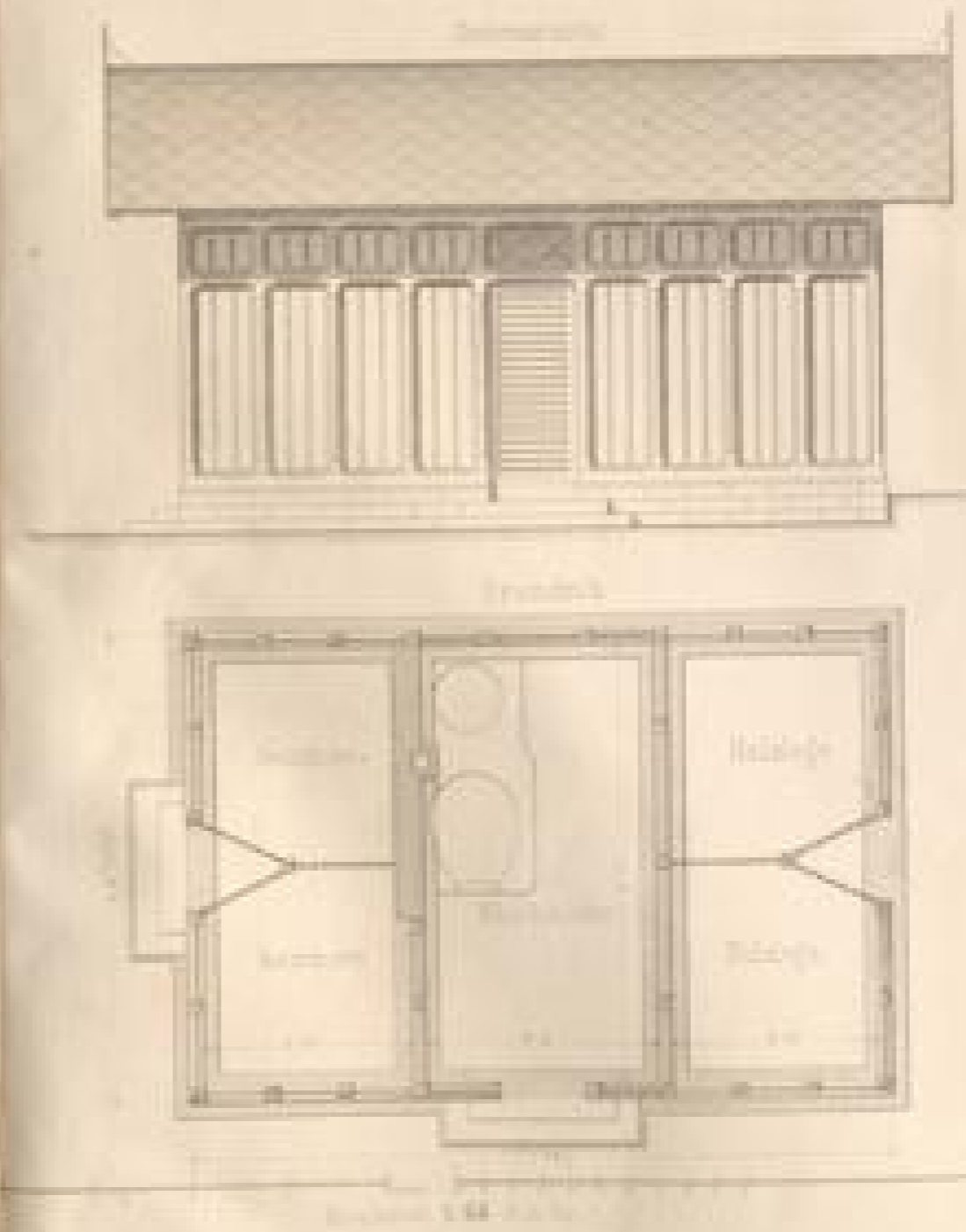
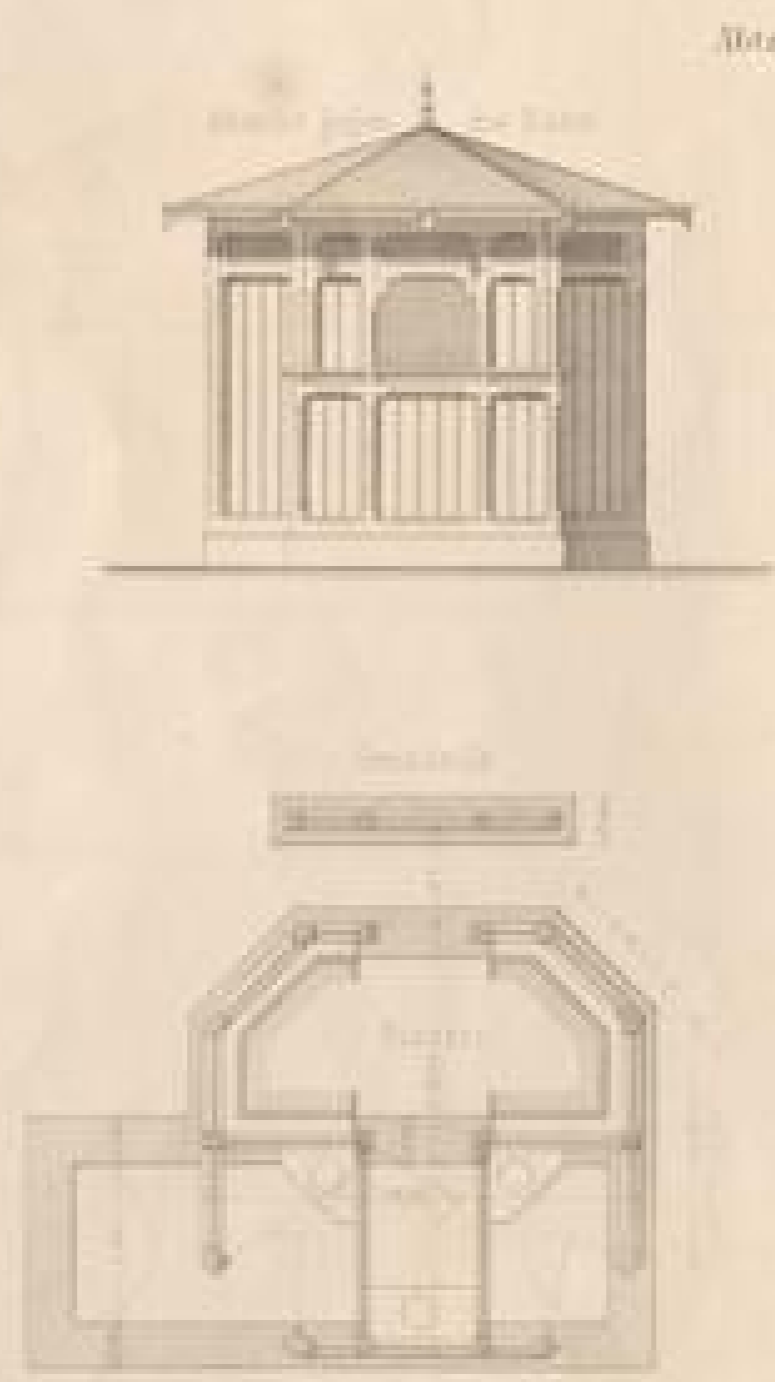
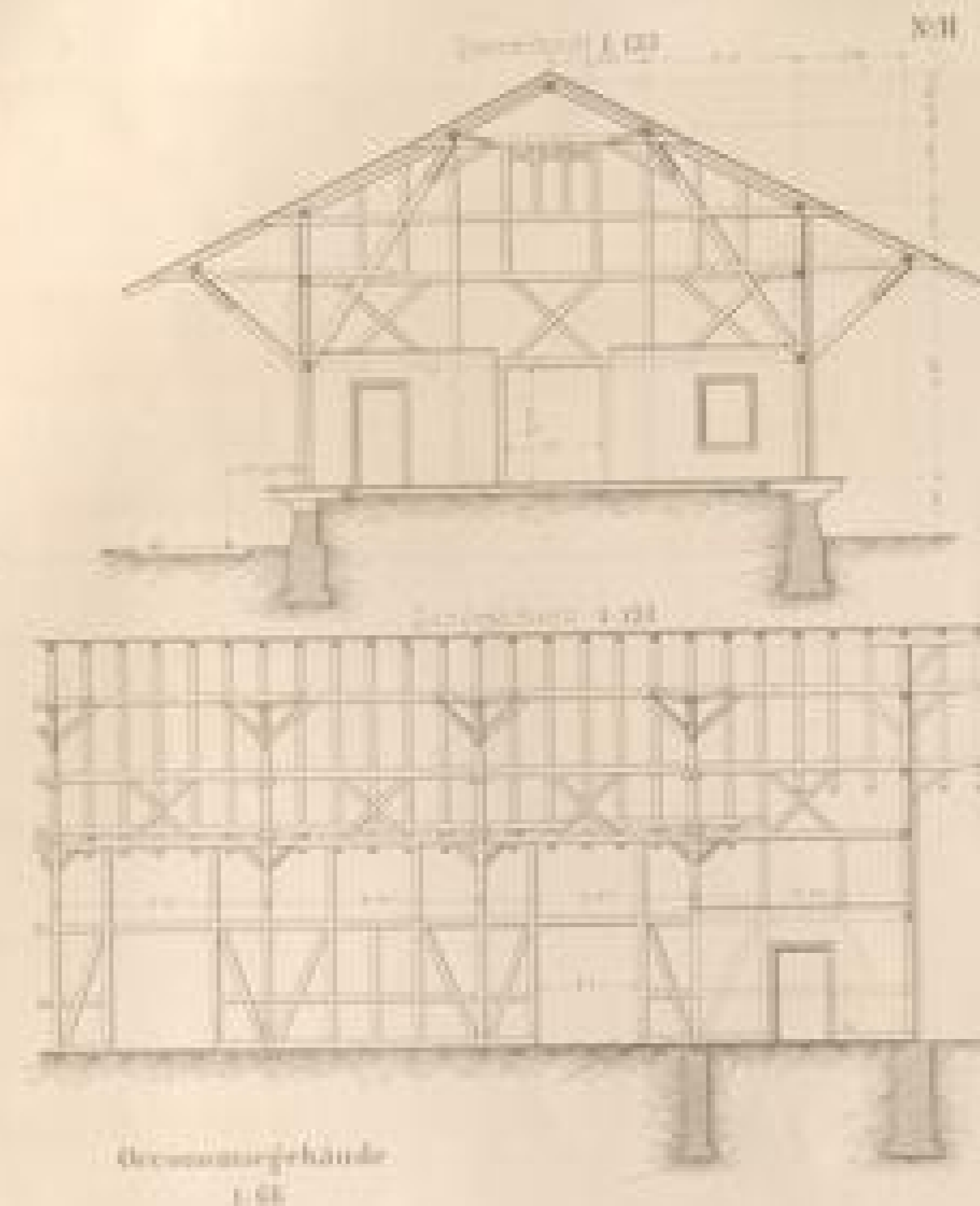
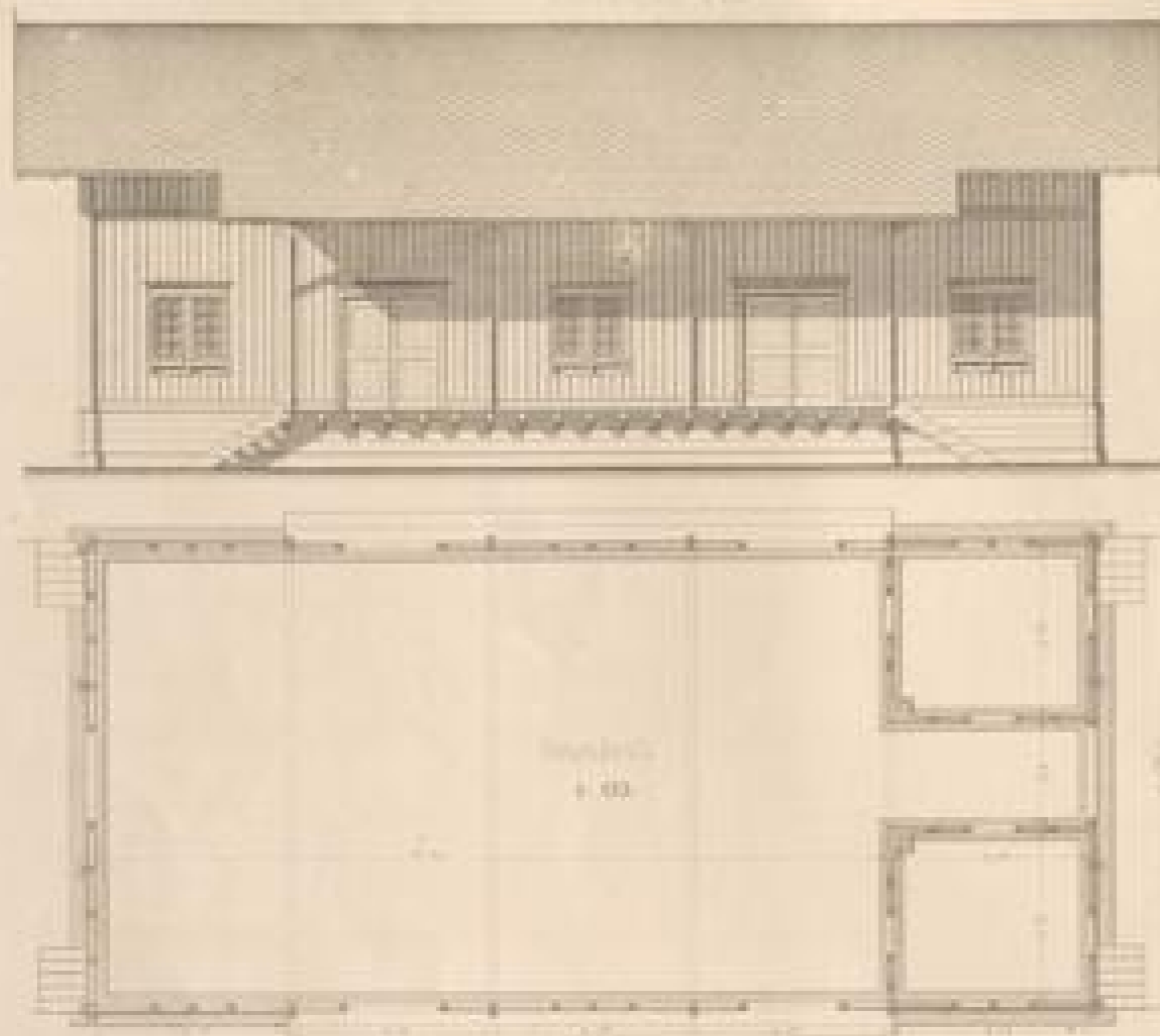
Eisenlohr, Friedrich

Carlsruhe, [1873]

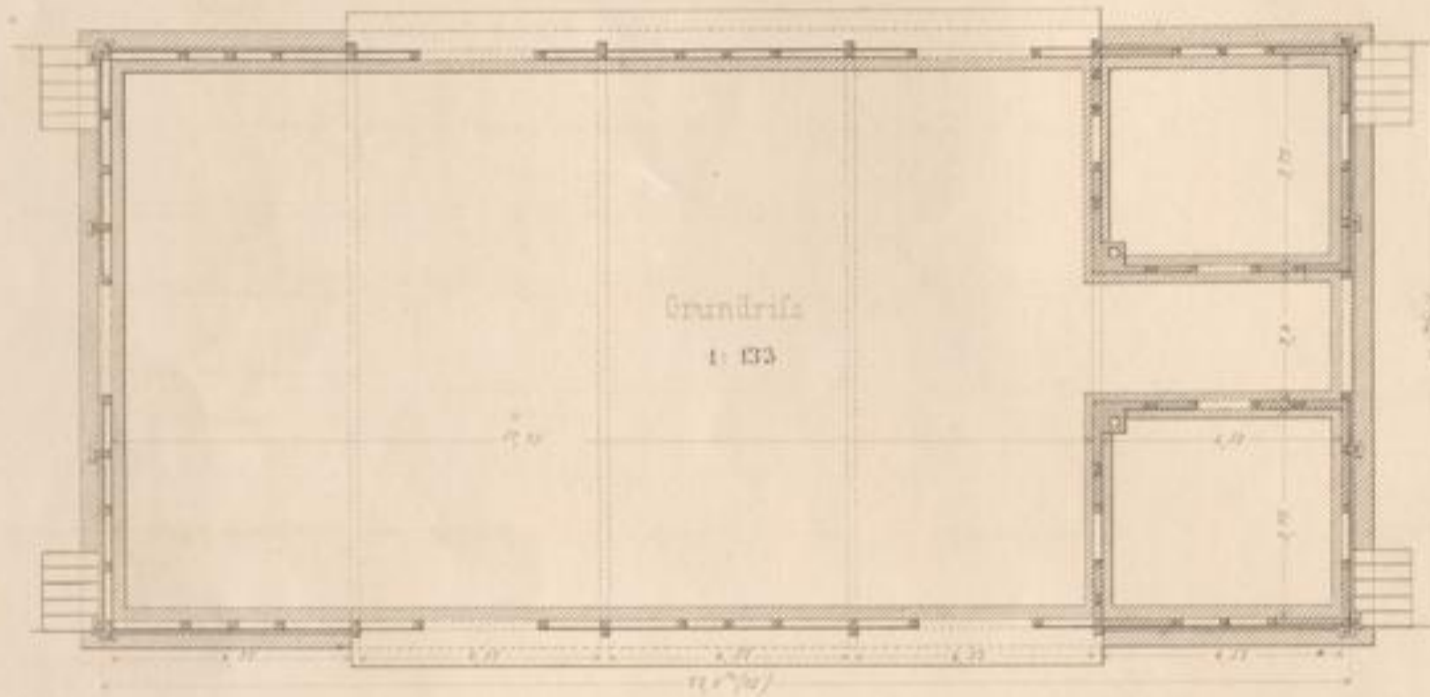
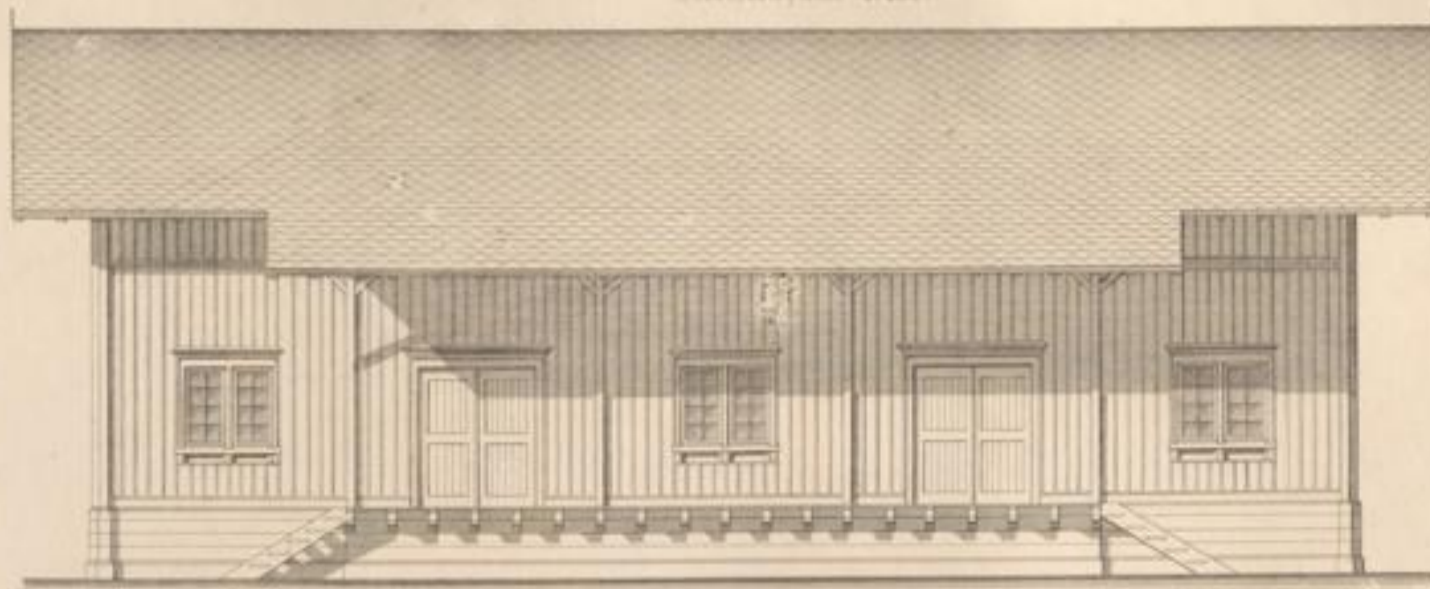
Illustration: Station Tauberbischofsheim

[urn:nbn:de:bsz:31-247080](https://nbn-resolving.org/urn:nbn:de:bsz:31-247080)

Station Überbischofheim
Gasthuppen



Seitenfäçade 1:133



Grundriß
1:133



Abtrittgebäude
1:16

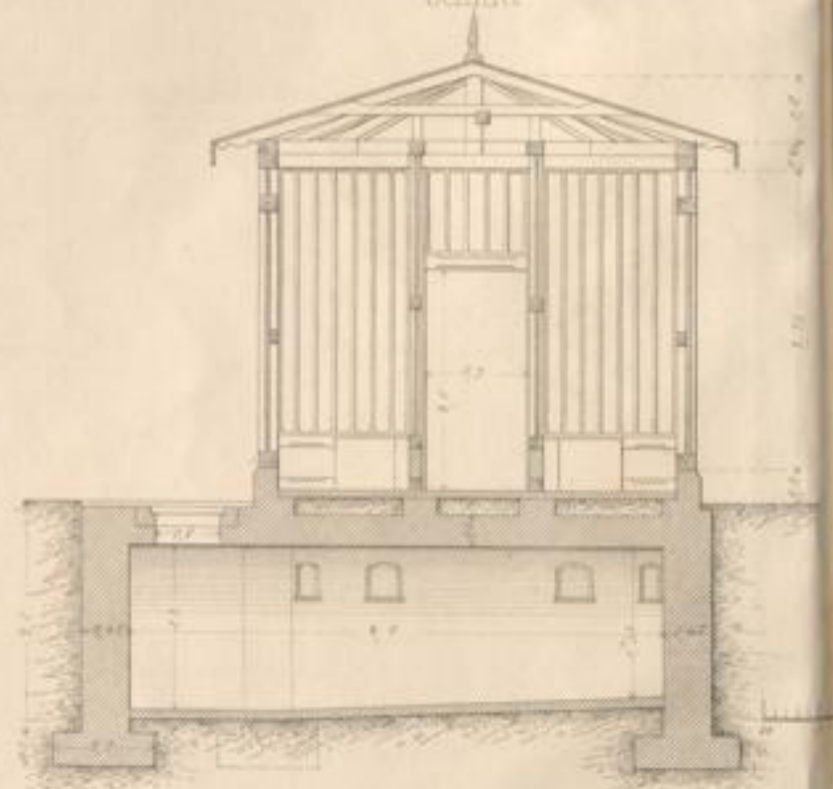
Ansicht gegen die Bahn



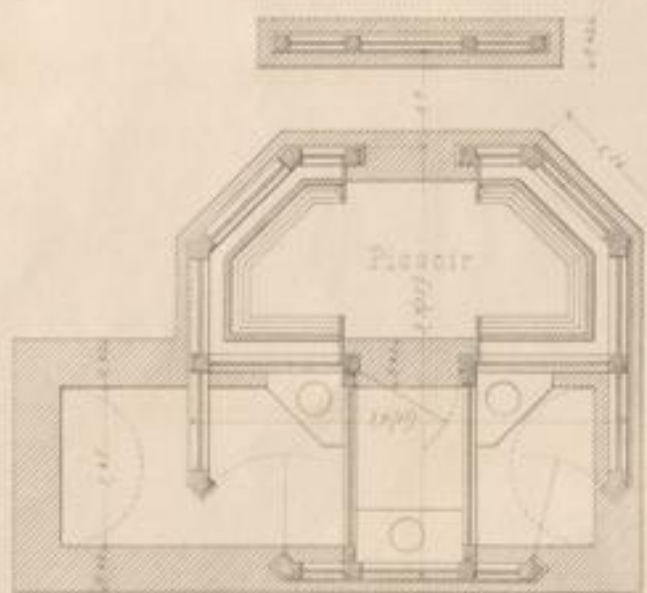
Ansicht gegen die Zufahrtstraße



Schnitt

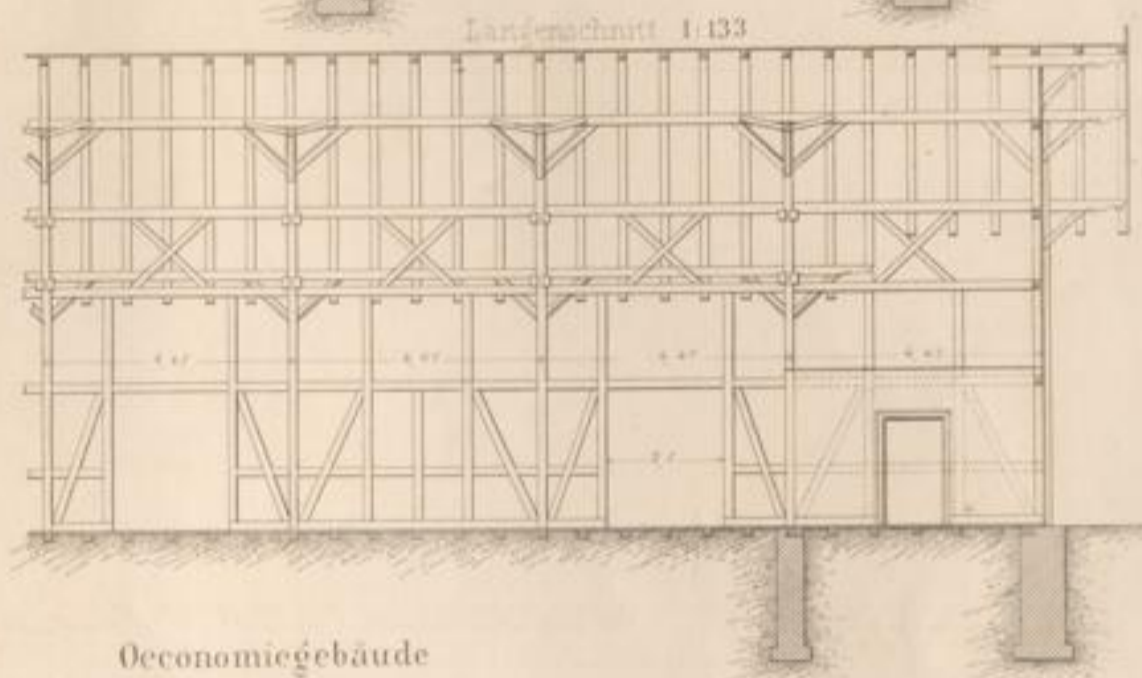
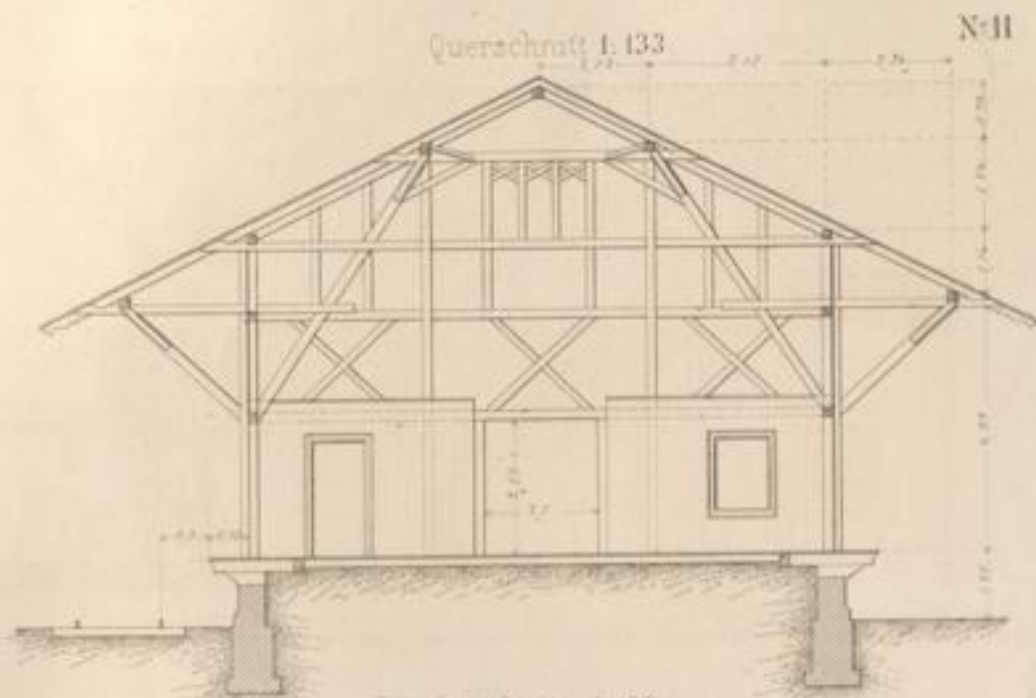
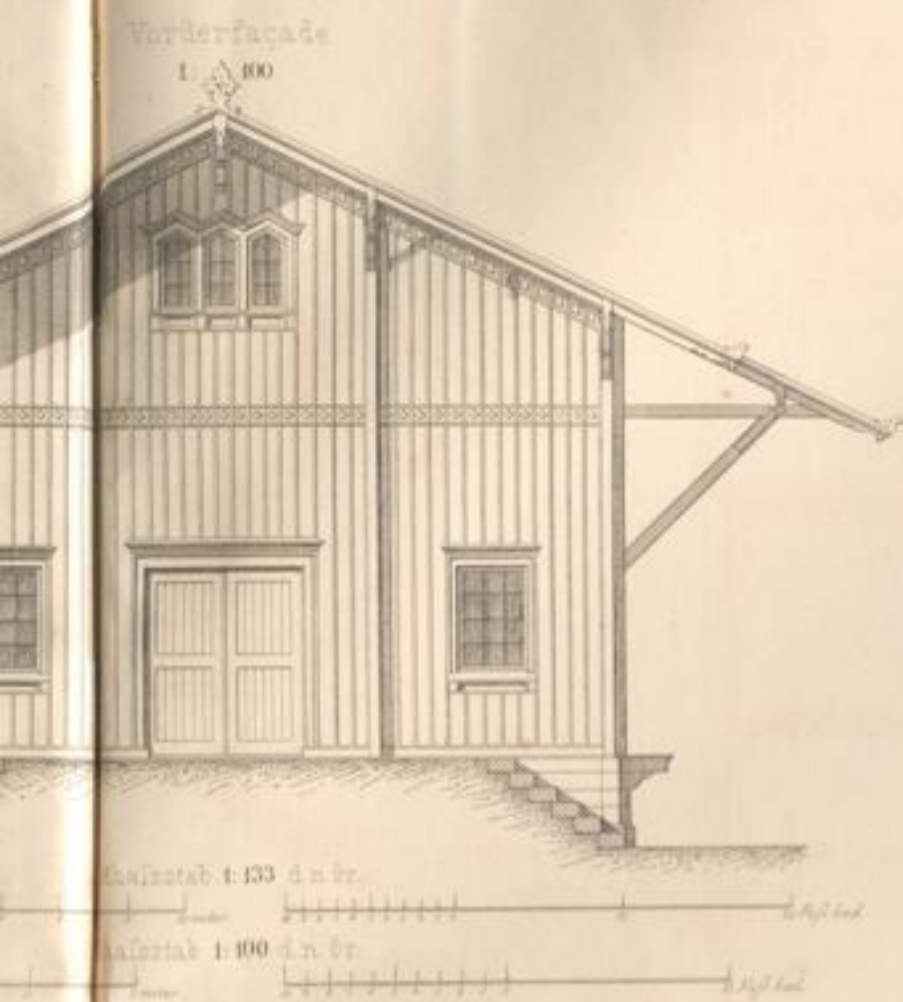


Grundriß

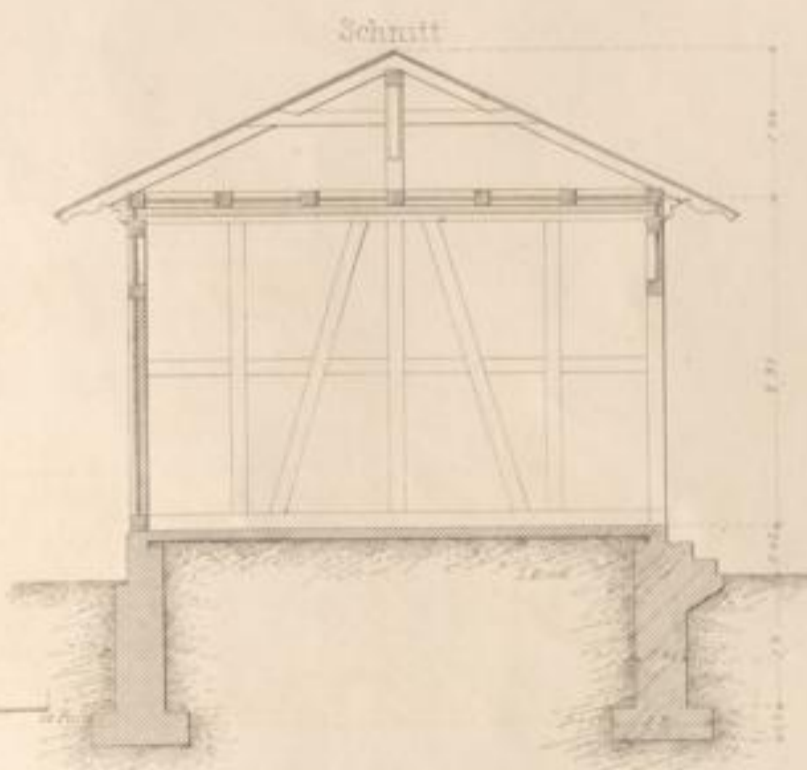
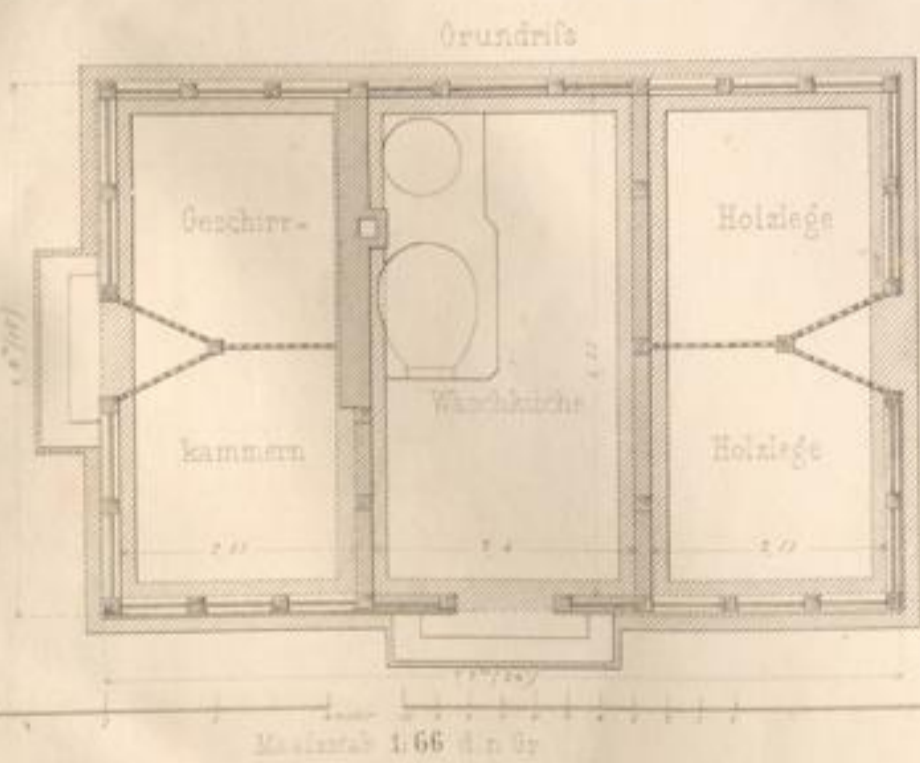
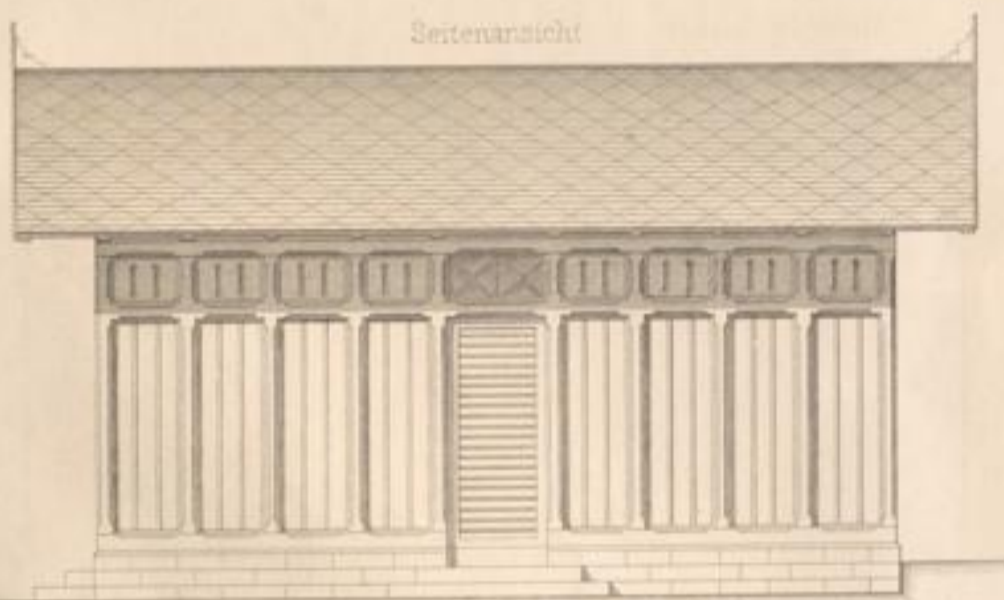


© Zeitert ddt.

1. Überbischofsheim
Geschuppen.



Oeconomiegebäude
1:66



Carlruhe, Druck & Verlag v. J. Weik.

