

Badische Landesbibliothek Karlsruhe

Digitale Sammlung der Badischen Landesbibliothek Karlsruhe

Bella dea de' Numi amore - JWK Mus.Ms. 330

Kalivoda, Jan Křtitel Václav

[S.l.], 1830-1860

Partitur

[urn:nbn:de:bsz:31-250903](https://nbn-resolving.org/urn:nbn:de:bsz:31-250903)

F. No. 40.

Nr. 330

K 330

Terzett
für

2 Tenor und 1 Baritonstimme / oder Bass /

mit Begleitung des Pianoforte

von

G. W. Halliweda.

Terzetto.

Tenore I^{no}.

Tenore II^{do}.

Bariton.

Larghetto.

Pianoforte.

fo. *po.* *fo.* *po.*

fo.

Bella De - a de Numi a - mo - re bella Dea de Numi a -

fo.

fo.

fo.

more bella De a de Nami a more bella Dea da te pie-

ta bella De a de Nami a

pp.

Handwritten signature or initials

more bella De. a de Numi amore bella De. a de Numi a: mo =

re bella De. a da te pieta i o ta =

do : ro umil im plo = = =

io t'a dorò umil im ploro io t'a dorò umil im plo : ro

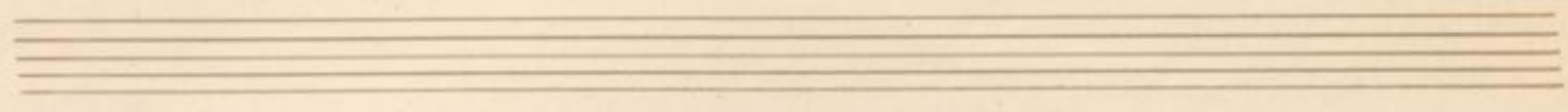
This system contains the first two systems of a handwritten musical score. The top system features a vocal line with lyrics "do : ro umil im plo = = =" and a piano accompaniment. The second system continues the vocal line with lyrics "io t'a dorò umil im ploro" and "io t'a dorò umil im plo : ro". The piano accompaniment consists of two staves.

alma De : a alma De : a alma De : a da te pie :

This system contains the second two systems of the handwritten musical score. The top system features a vocal line with lyrics "alma De : a alma De : a alma De : a da te pie :". The piano accompaniment consists of two staves. The score includes various musical notations such as notes, rests, and dynamic markings like *fo.* and *ppp*.

Handwritten musical score for the first system. It consists of four staves: two vocal staves (Soprano and Alto) and two piano staves. The lyrics are: "ta alma De : a alma De : a alma De : a da te pie". The music is in G major and 3/4 time. Dynamic markings include *f.* and *ppp.* in red ink. The piano part features a complex accompaniment with many sixteenth notes.

Handwritten musical score for the second system. It consists of four staves: two vocal staves (Soprano and Alto) and two piano staves. The lyrics are: "ta : : alma De : a da te : pie ta.". The music continues in G major and 3/4 time. Dynamic markings include *f.* and *ppp.* in red ink. The piano part continues with a similar accompaniment style.

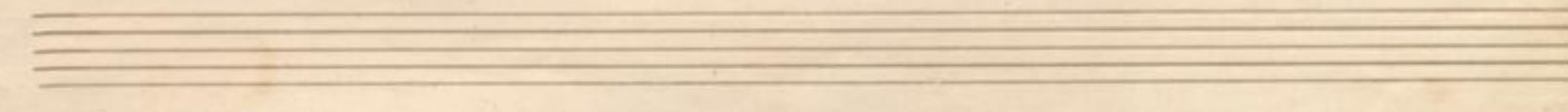


con espressione.

Bella De: a de Numia: mo

700

re bella De: a de Numi a: more io t'a do: ro umil em =



Handwritten musical score for the first system. The vocal line is on a single staff with a treble clef and a key signature of one sharp (F#). The lyrics are: *plou alma De: a da te pieta*. The piano accompaniment is on a grand staff (treble and bass clefs). The music includes various notes, rests, and dynamic markings such as *con espressione*. There are red annotations above the vocal line, including a long slur and a *>* marking.

Handwritten musical score for the second system. The vocal line continues with the lyrics: *mo: re bella De: a de Nūmi a: more io t'a dovo umil im:*. The piano accompaniment continues with similar notation. The system includes various musical notations, including slurs, accents, and dynamic markings. There are red annotations above the vocal line, including a long slur and a *>* marking.

Dolce.

Pieta Dea de Numi

ppp
bella Dea de

ritar:
ploro alma Dea da te pieta

ppp

ritar:

Numi a : mo : re bella De : a de Numi a : more io t'a

Numi a : more de Numi amore bella Dea de Numi a : more de Numi amore

Deo umil imploro alma Dea da te pieta alma

io t'adoro umil imploro alma Dea alma Dea da te pieta

Dea alma Dea alma Dea da te pieta da te pie

ppp

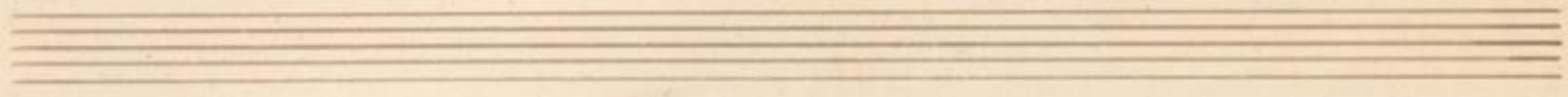
ppp

ppp

ppp

pp

pp



ppp
ta da te pietà.

ppp

ppp

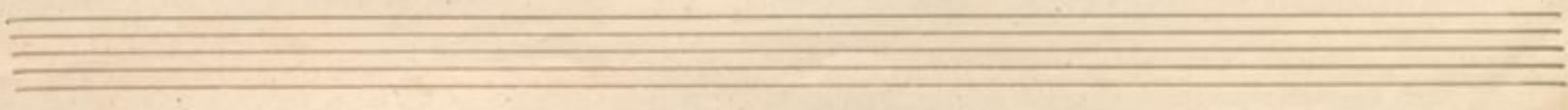
Tempo di Polacca

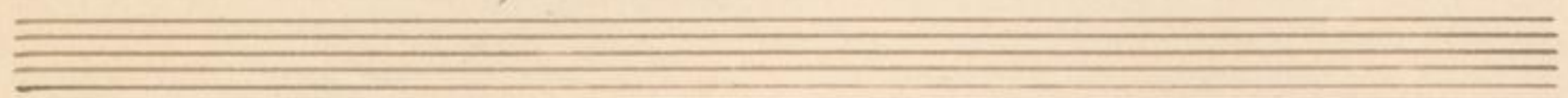
ppp

con fuoco.

Tu sei la

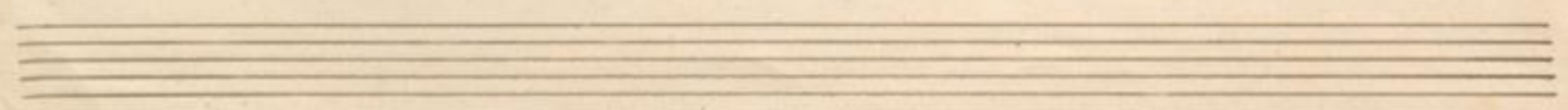
pp





so la che mi con so-la so ave tenera felicità tu sei la so-la che

mi con so la so ave tenera felicità. *con fuoco.*
Tu sei la so-la che mi con



Handwritten musical score on aged paper, featuring a vocal line and a piano accompaniment. The score is divided into three systems. The first system contains the lyrics: *sola so ave' tenera felicità tu sei la sola che mi con sola so*. The second system contains the lyrics: *ave' tenera felicità.* followed by the instruction *con fuoco.* and the lyrics: *Tu sei la sola che mi con sola so ave'*. The piano accompaniment consists of two staves (treble and bass clef) with various musical notations including notes, rests, and dynamic markings. The paper shows signs of age, including some staining and a small mark at the top center.

tenera felicità tu sei la so: la che mi con so: la so ave tenera

The first system of the handwritten musical score consists of four staves. The top two staves are for the vocal line, and the bottom two are for the piano accompaniment. The music is in a key with two sharps (F# and C#) and a 4/4 time signature. The vocal line begins with a melodic phrase, followed by the lyrics. There are red markings above the vocal line, including a slur and an accent (>). The piano accompaniment features a steady rhythmic pattern in the right hand and a more active bass line in the left hand.

felicità tu sei la so: la che mi con so: la so ave tenera felicità:

The second system of the handwritten musical score continues the piece. It also consists of four staves: two for the vocal line and two for the piano accompaniment. The key signature and time signature remain the same as in the first system. The vocal line continues with the lyrics, ending with a colon. Red markings, including a slur and an accent (>), are present above the vocal line. The piano accompaniment maintains its rhythmic structure, providing harmonic support for the vocal melody.

Handwritten musical score on aged paper, featuring a vocal line with lyrics and a piano accompaniment. The score is divided into two systems, each with three staves.

System 1:

- Vocal Staff:** Lyrics: "Tu sei la so-la che mi con so-la tu sei con so-la che mi con". Includes dynamic markings *ppp* and *ta.* and accents (>).
- Piano Staff:** Accompaniment with dynamic markings *ppp*, *forto*, and *ta.*

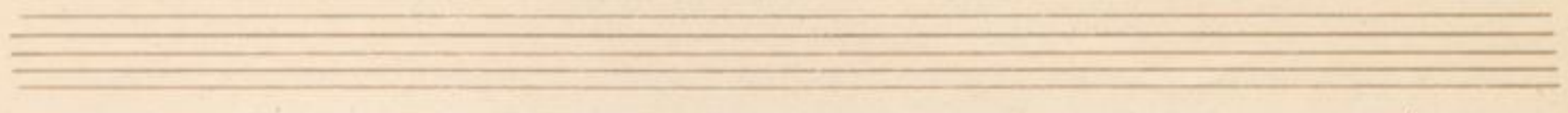
System 2:

- Vocal Staff:** Lyrics: "so-la so ave tenera felici-ta so ave tenera fe lici-ta". Includes dynamic markings *ppp*, *fo*, and accents (>).
- Piano Staff:** Accompaniment with dynamic markings *ppp*, *fo*, and *ta.*

The manuscript includes various musical notations such as notes, rests, and slurs, along with handwritten annotations in red ink.

so ave tenera felici:ta so ave tenera felicità, felici =

ta = felicità
felici:ta
felici:ta felicità



ta.

fo.

confuoco

Tu sei la so: la che mi con

fo.

fo.

fo.

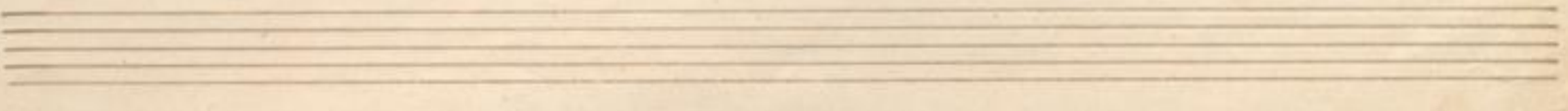
confuoco

so are tenera felici: ta

so: la

confuoco

Tu sei con so: la che mi con



Handwritten musical score for the first system. It consists of four staves: two vocal staves (Soprano and Alto) and two piano accompaniment staves (Right and Left Hand). The lyrics are written below the vocal staves. There are red annotations: 'p^o' above the first vocal staff, 'p^o' above the second vocal staff, and 'p^o p^o' above the piano accompaniment staves. The lyrics are: "che mi con tu sei la sola sola so ave tenera felici: ta, tu sei la sei la so: la che mi con".

Handwritten musical score for the second system. It consists of four staves: two vocal staves (Soprano and Alto) and two piano accompaniment staves (Right and Left Hand). The lyrics are written below the vocal staves. There are red annotations: 'f' above the first vocal staff, 'f' above the second vocal staff, and 'f' above the piano accompaniment staves. The lyrics are: "sola felici ta che mi con so ave tenera tu sei la so la che mi con sola so ave tenera felicitat tu sei la sei la so la che mi con".

sola so ave tenera felici ta *chemi con sola*
 so la so ave tenera felici ta *tu sei la sola* so ave
 sola so ave tenera felici ta *tu sei la sola* *chemi con* sola so ave

felici ta *chemi con* sola so ave tenera felici
 tenera *tu sei la* sola *chemi con* sola so ave tenera felici
 tenera felici ta *tu sei la* *chemi con* sola so ave tenera felici

con tutta la forza
ritar.

ppp. *ff.*

ta, felici ta felici ta felici ta felici ta felici ta felici ta

ppp. *ff.* *ritar.*

ta, felici ta

ppp. *ff.* *ritar.*

ta felici ta felici ta felici ta felici ta

ppp. *ff.* *ritar.*

ta.

ta.

ta.

ff. in tempo.