

Badische Landesbibliothek Karlsruhe

Digitale Sammlung der Badischen Landesbibliothek Karlsruhe

2 Folk songs - WK Mus.Ms. 33 a/b

Kalliwoda, Wilhelm

[S.l.], 1845-1870

Kalliwoda, Wilhelm: Das Blümeli

[urn:nbn:de:bsz:31-253221](https://nbn-resolving.org/urn:nbn:de:bsz:31-253221)

Das Blümeli.

1842 N.

336

Das Blümeli

Deutsches Volklied für
Vogeln, Frauen, Lays.

A page of 18 blank musical staves, arranged in a vertical column. Each staff consists of five horizontal lines. The paper is aged and yellowed. The right edge of the page is bound, and the adjacent page is partially visible, showing musical notation.

A partial view of the adjacent page on the right, showing musical notation. It includes a treble clef at the top, a key signature of one sharp (F#), and a bass clef further down. The notation is partially obscured by the binding.

Das Blümel.

Handwritten musical notation for the first system, featuring a treble and bass clef with a key signature of one sharp and a 2/4 time signature. The notation includes a large section of crossed-out music.

Handwritten musical notation for the second system, continuing the piece with treble and bass clefs.

Handwritten musical notation for the third system, marked "I 33." and showing a change in time signature to 6/8.

Handwritten musical notation for the fourth system, continuing the piece with treble and bass clefs.

Handwritten musical notation for the fifth system, marked "I 34." and showing a change in time signature to 6/8.

Handwritten musical notation for the sixth system, marked "gio" and showing a change in time signature to 6/8.

Handwritten musical notation for the seventh system, marked "I 39." and showing a change in time signature to 7/8.

Handwritten musical notation for the eighth system, marked "I 63." and showing a change in time signature to 9/8.

I 134.)

Handwritten musical notation for measures 134-136. The system consists of two staves: a treble clef staff on top and a bass clef staff on the bottom. The music is written in a minor key with a 2/4 time signature. The notation includes various rhythmic values such as eighth and sixteenth notes, and rests.

Handwritten musical notation for measures 137-140. The system consists of two staves: a treble clef staff on top and a bass clef staff on the bottom. The music continues with similar rhythmic patterns and includes some dynamic markings.

Handwritten musical notation for measures 141-144. The system consists of two staves: a treble clef staff on top and a bass clef staff on the bottom. The notation shows a continuation of the musical piece with various note values and rests.

I 287.

Handwritten musical notation for measures 145-148. The system consists of two staves: a treble clef staff on top and a bass clef staff on the bottom. The music features a mix of eighth and sixteenth notes.

Handwritten musical notation for measures 149-152. The system consists of two staves: a treble clef staff on top and a bass clef staff on the bottom. The notation includes various rhythmic patterns and rests.

I 293.

Handwritten musical notation for measures 153-156. The system consists of two staves: a treble clef staff on top and a bass clef staff on the bottom. The music continues with similar rhythmic patterns.

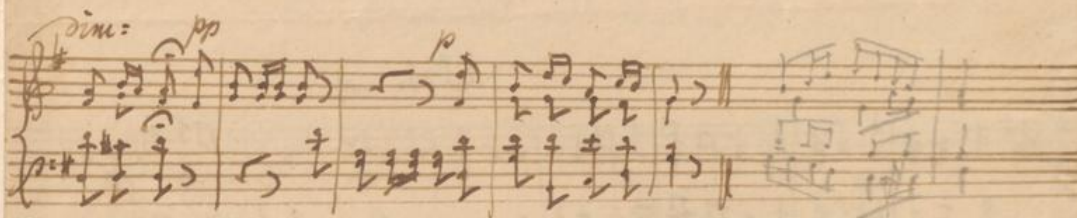
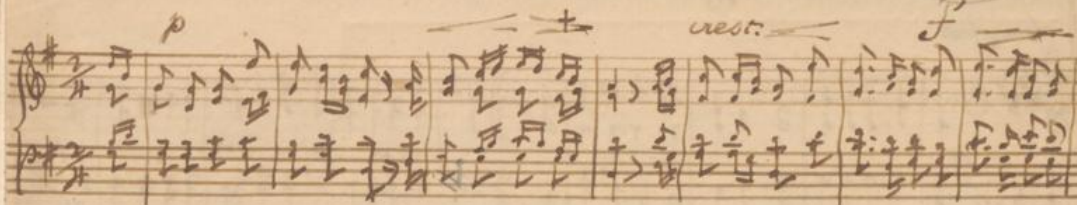
Handwritten musical notation for measures 157-160. The system consists of two staves: a treble clef staff on top and a bass clef staff on the bottom. The notation includes various rhythmic patterns and rests.

Handwritten musical notation for measures 161-164. The system consists of two staves: a treble clef staff on top and a bass clef staff on the bottom. The entire system is heavily crossed out with dense, overlapping diagonal lines, rendering the original notation illegible.

Handwritten musical score on aged paper. The page features ten horizontal staves. The left edge shows the continuation of the score from the previous page, with various musical notations including notes, rests, and clefs. The main body of the page consists of ten empty staves, suggesting a continuation of the composition or a section of the score that has not yet been written.

I 134.1

A page of 18 blank musical staves on aged, yellowish paper. The staves are arranged vertically and are completely empty of any musical notation. The paper shows signs of wear, including creases and discoloration, particularly at the top and bottom edges. The staves are evenly spaced and extend across most of the page width.



1.
 Ihr meine Brd ad Schürli isch,
 ad Schürli noch p. ruff,
 Das Schürli schi wünnenaf,
 Denn schi ad uns im Grog kuff.
 O Schürli mi i wüsch gung
 bi den Grog.

2.
 Ihr kummt uns nicht Schürli mit,
 wüsch nimmer nit in so!
 ad sch bi den Grog wüsch wüsch
 wo schi, isch noch Schürli mit.
 O Schürli mi sch.

3.
 Das Schürli schi, wüsch schi mi,
 i wüsch nit brüsch ab.
 Schürli nu wüsch wüsch bi!
 Das Schürli mi wüsch wüsch bi.
 O Schürli sch.

4.
 O lert mi bym neuen Schürli sch,
 I wüsch nit wüsch nit
 I wüsch nit wüsch nit
 O Schürli sch.

5.
 U wüsch nit isch bi,
 U ad Schürli v wüsch
 So wüsch nit wüsch Schürli
 In uns ad Grog, das Schürli.
 O Schürli mi sch.

Stüpfes Holzwald

für zwei. Sopran u. Bass.
von W. Kalliwotig

Liederspiel

2da u. 3da u. 4da

1.
Die Lärchelein sie schlafen schon längst im Mondschneise, sie wachen mit den Hühnern auf ihrem
Auenweidelein. Es wächelt bei der Lärchenweide, es hüpfet ein im Tannene:
Hörst du, Hörst du, Hörst du, mein Lärchelein!

2.
Die Mägdlein sie singen so schön im Dorfschneise, sie sind zum Hof gekommen, in ihrem
Kleidlein schön. Das Grünlein in dem Auenweide, es hat allein sich kund: Hörst du eh?

3.
Die Mägdlein sie sind gekommen so schön im Dorfschneise, sie sind zum Hof gekommen, in ihrem
Kleidlein schön. Und es so schön wie Lärchen sind, so hat er ihn in die Auenweide. Eh?

4.
Die Mägdlein sind zum Grünlein, es schlief mein Lärchenlein, es ist von Hof
gekommen schon sein Lärchenweidelein; es wächelt mochten sie
wachteln mit Auenweide so schön! Hörst du eh?