

Badische Landesbibliothek Karlsruhe

Digitale Sammlung der Badischen Landesbibliothek Karlsruhe

2 Folk songs - WK Mus.Ms. 33 a/b

Kalliwoda, Wilhelm

[S.I], 1845-1870

Partitur

[urn:nbn:de:bsz:31-253221](https://nbn-resolving.org/urn:nbn:de:bsz:31-253221)

Das Blümel.

Handwritten musical notation for the first system, featuring a treble and bass clef with a key signature of one sharp (F#) and a 2/4 time signature. The notation includes a large section of dense, overlapping scribbles in the middle.

Handwritten musical notation for the second system, continuing the piece with treble and bass clefs and a key signature of one sharp.

Handwritten musical notation for the third system, marked with 'I 33.' above the staff. It shows a change in the bass clef part, possibly indicating a new section or measure.

Handwritten musical notation for the fourth system, continuing the piece with treble and bass clefs and a key signature of one sharp.

Handwritten musical notation for the fifth system, marked with 'I 34.' above the staff. It features a change in the bass clef part.

Handwritten musical notation for the sixth system, marked with 'gio' above the staff. The notation includes some decorative flourishes and a change in the bass clef part.

Handwritten musical notation for the seventh system, marked with 'I 39.' above the staff. It shows a change in the bass clef part.

Handwritten musical notation for the eighth system, marked with 'I 63.' above the staff. It shows a change in the bass clef part.

I 134.)

Handwritten musical notation for measures 134-136. The system consists of two staves: a treble clef staff on top and a bass clef staff on the bottom. The music is written in a minor key with a 2/4 time signature. The notation includes various rhythmic values such as eighth and sixteenth notes, and rests.

Handwritten musical notation for measures 137-140. The system consists of two staves: a treble clef staff on top and a bass clef staff on the bottom. The music continues with similar rhythmic patterns and includes some dynamic markings.

Handwritten musical notation for measures 141-144. The system consists of two staves: a treble clef staff on top and a bass clef staff on the bottom. The notation shows a continuation of the musical piece with various note values and rests.

I 287.

Handwritten musical notation for measures 145-148. The system consists of two staves: a treble clef staff on top and a bass clef staff on the bottom. The music features a mix of eighth and sixteenth notes.

Handwritten musical notation for measures 149-152. The system consists of two staves: a treble clef staff on top and a bass clef staff on the bottom. The notation includes various rhythmic patterns and rests.

I 293.

Handwritten musical notation for measures 153-156. The system consists of two staves: a treble clef staff on top and a bass clef staff on the bottom. The music continues with similar rhythmic patterns and includes some dynamic markings.

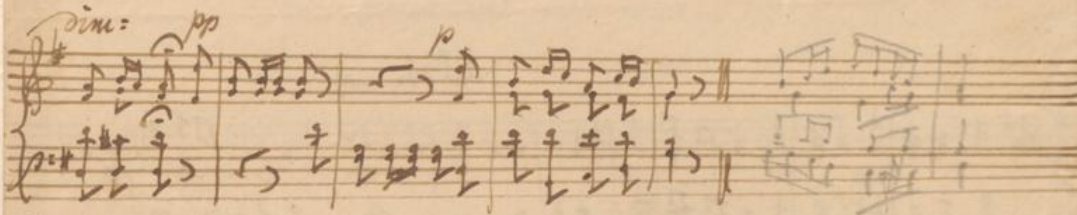
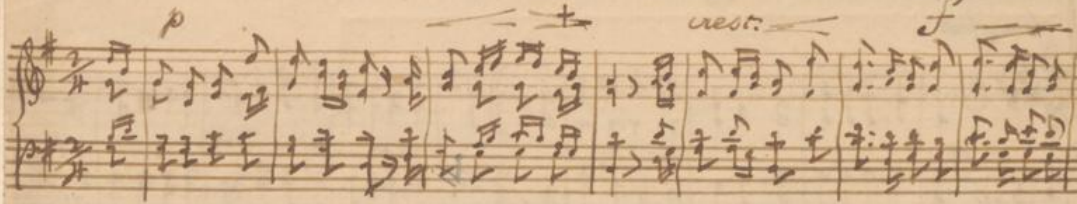
Handwritten musical notation for measures 157-160. The system consists of two staves: a treble clef staff on top and a bass clef staff on the bottom. The notation shows a continuation of the musical piece with various note values and rests.

Handwritten musical notation for measures 161-164, which is almost entirely obscured by a dense, dark scribble. The scribble consists of many overlapping, diagonal and horizontal lines, making the original notation illegible. Only some faint notes and rests are visible at the beginning and end of the system.

This image shows a page of aged, yellowed musical manuscript paper. The page is oriented vertically and features ten horizontal staves. The left edge of the page is torn, revealing fragments of handwritten musical notation from the adjacent page. These fragments include notes, stems, and clefs, though they are partially cut off. The main body of the page is blank, showing only the empty staves. The paper has a slightly textured appearance and some minor discoloration or foxing, particularly towards the bottom right corner.

I 134.1

A page of 18 blank musical staves, arranged in a vertical column. Each staff consists of five horizontal lines. The paper is aged and yellowed. The staves are empty of any musical notation.



1.
 Ihr meine Brd ad Schürli igf, ad
 Schürli roff p ruff, ad
 Das Schürli foch wünnenaf,
 Denn fies ad ein im Graz kuff.
 O Schürli mi i wüff ruff
 bi den fuff.

2.
 Ihr kummt mir nicht Schürli mit,
 Ich meine nit in fo!
 ad ist bei den Gott wird fuff fuff
 wo für, igf wuff Schürli mit.
 O Schürli mi ad.

3.
 Das Schürli bliff, wüff fuff mi,
 i wuff nit bruff ab.
 Schürli nu wüff fuff bi!
 Das fuff fuff mir fuff fuff fuff.
 O Schürli ad.

4.
 O luff mi bym wuff Schürli fuff,
 I wuff nit ad wuff mit,
 I wuff fuff wuff ad fuff fuff fuff,
 fuff, i wuff wuff fuff fuff fuff.
 O Schürli ad.

5.
 U wuff nit wuff fuff fuff bi,
 Uff Schürli v wuff fuff
 No fuff fuff wuff fuff Schürli
 In mit wuff fuff, das fuff fuff.
 O Schürli mi ad.

Stüpfen Holzwald

für zwei. Sopran u. Bass.
von W. Kalliwotig

Liedtext

2da u. 3da u. 4da

1.
Die Lärchen sind so schön, sie singen im Mondschein, sie weben mit den Vögeln aus ihren
Auenzweigen. Es wächelt bei der Lärchenzweigen, es wächelt ein im Tannenzweigen:
Hörst du, Hörst du, Hörst du, mein Lärchen!

2.
Die Nadeln sind so grün so schön im Sonnenschein, sie sind so schön geordnet, in ihren
Nadeln sind. Das Grün ist in dem Lärchenzweigen, es ist allein bei dem: Hörst du eh?

3.
Die Nadeln sind so schön so schön im Sonnenschein, sie sind so schön geordnet, in ihren
Nadeln sind. Das Grün ist in dem Lärchenzweigen, es ist allein bei dem: Hörst du eh?

4.
Die Nadeln sind so schön so schön im Sonnenschein, sie sind so schön geordnet, in ihren
Nadeln sind. Das Grün ist in dem Lärchenzweigen, es ist allein bei dem: Hörst du eh?