

Badische Landesbibliothek Karlsruhe

Digitale Sammlung der Badischen Landesbibliothek Karlsruhe

Air varié pour le violon avec accompagnement de second violon, alto et violoncelle ou de piano

Kalivoda, Jan Křtitel Václav

Leipzig [u.a.], [1864]

Violine I

[urn:nbn:de:bsz:31-256979](https://nbn-resolving.org/urn:nbn:de:bsz:31-256979)

Joh. Mus. Dr. 118,2

AIR VARIÉ.

Introduction.
Molto moderato.

Violon I.

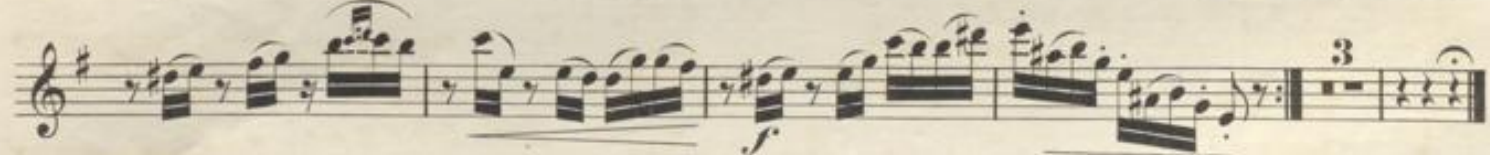
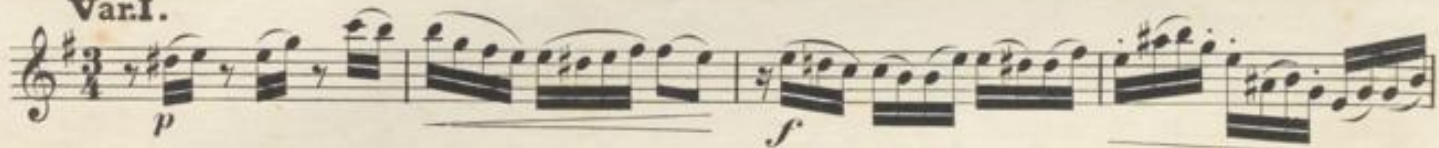
J.W. Kalliwoda, Op. 210.



Thema.
L'istesso Tempo.



Var.I.



Var.II.



Sich und Druck der Verlagsbuchhandlung in Leipzig.



Violon I.

Var.III.

Musical notation for Variation III, measures 1-12. The piece is in 3/4 time with a key signature of one sharp (F#). It begins with a *pp* dynamic. The notation includes various rhythmic patterns such as eighth and sixteenth notes, and rests.

Var.IV.

Più lento quasi Adagio.

Musical notation for Variation IV, measures 1-12. The tempo is marked *Più lento quasi Adagio*. The key signature changes to three sharps (F#, C#, G#). The piece starts with a *p* dynamic and includes markings for *f* and *ritard.* (ritardando). The notation features a slower, more expressive melodic line.

Var.V.

Tempo I.

Musical notation for Variation V, measures 1-12. The tempo returns to *Tempo I*. The key signature remains three sharps. The piece begins with a *f* dynamic and is marked *brillante*. The notation is characterized by rapid sixteenth-note passages and trills.

Violon I.

p leggiero

Cadenza.
f. a piacere

pp

a Tempo.
p

pp ritard.

301

Detailed description: This page of a musical score for Violon I contains ten staves of music. The first staff begins with a treble clef, a key signature of one sharp (F#), and a 2/4 time signature. The music is characterized by rapid sixteenth-note passages. The second staff includes the dynamic marking *p leggiero* and a trill marking *tr*. The third and fourth staves continue the rapid sixteenth-note patterns. The fifth staff features a *Cadenza* section, marked *f. a piacere*, with a 2/4 time signature and a repeat sign. The sixth staff begins with *pp* and includes a trill marking. The seventh staff is marked *a Tempo.* and *p*. The eighth and ninth staves continue the sixteenth-note passages. The tenth staff concludes with *pp ritard.* and a fermata. The page number 301 is printed at the bottom center.

