

Badische Landesbibliothek Karlsruhe

Digitale Sammlung der Badischen Landesbibliothek Karlsruhe

Air varié pour le violon avec accompagnement de second violon, alto et violoncelle ou de piano

Kalivoda, Jan Křtitel Václav

Leipzig [u.a.], [1864]

Violoncello

[urn:nbn:de:bsz:31-256979](https://nbn-resolving.org/urn:nbn:de:bsz:31-256979)

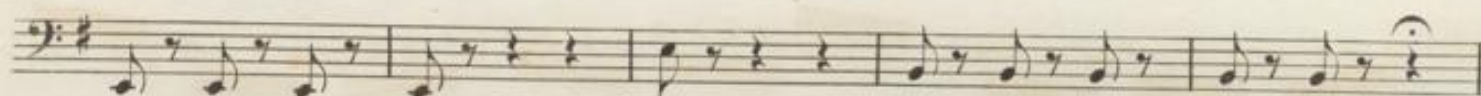
Julius H. v. M. 2

AIR VARIÉ.

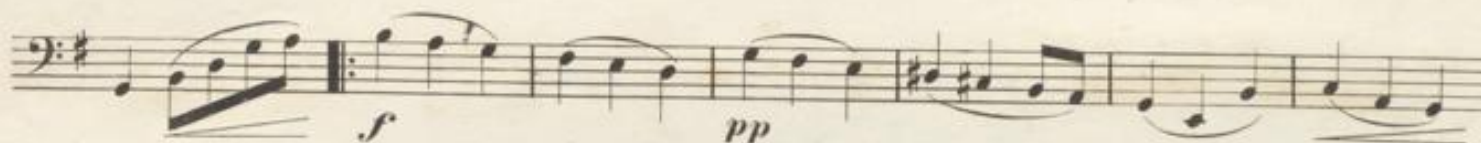
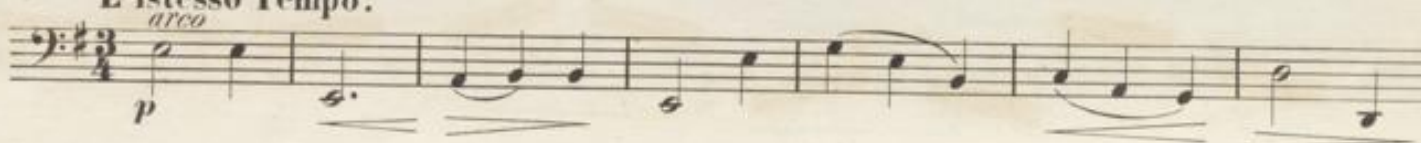
Introduction.
Molto moderato.

Violoncelle.

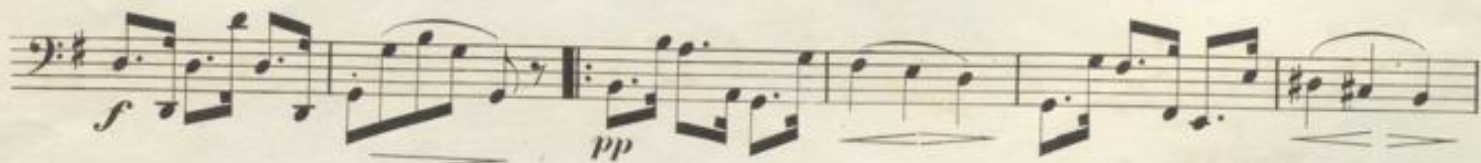
J.W. Kalliwoda, Op. 240.



Thema.
L'istesso Tempo.



Var. I.



301. n.



Violoncelle.

Var. II.

pizz.

p

Musical notation for Variation II, pizzicato section. It consists of six staves of music in bass clef, 3/4 time, with a key signature of one sharp (F#). The first staff begins with a dynamic marking of *p*. The notation features a rhythmic pattern of eighth and sixteenth notes with slurs. The section concludes with a double bar line and a fermata over the final note.

Var. III.

Thema.

p

Musical notation for Variation III, Thema. It consists of three staves of music in bass clef, 3/4 time, with a key signature of one sharp (F#). The first staff begins with a dynamic marking of *p*. The notation features a melodic line with slurs and a fermata over the final note. The section concludes with a double bar line and a fermata over the final note.

Var. IV.

Più lento quasi Adagio.

p

Musical notation for Variation IV, Più lento quasi Adagio. It consists of one staff of music in bass clef, 3/4 time, with a key signature of one sharp (F#). The notation features a melodic line with slurs and a fermata over the final note. The section concludes with a double bar line and a fermata over the final note.

Violoncelle.

f *pp*

1 *p* *ff* *ppp* 2

Var.V.
Tempo I.

f *p* *f* *p* *f* *p* *f* *p* *f* *p* *f* *p* *f* *p* *f*

f *p* *f* *p* *f* *p* *f* *p* *f* *p* *f* *p* *f* *p* *f* *p*

f *p*

f *p* *f* *p* *f* *p* *f* *p* *f* *p* *f* *p* *f* *p* *f* *p*

f *ff* *ritard.*

a Tempo.

Cadenza. *pizz.* *p*

arco *p* *ritard.* *pp*

