

Badische Landesbibliothek Karlsruhe

Digitale Sammlung der Badischen Landesbibliothek Karlsruhe

Andante et rondino pour le violon

Prume, François Hubert

Hambourg [u.a.]Schuberth, [ca. 1841]

Violine II

[urn:nbn:de:bsz:31-271881](https://nbn-resolving.org/urn:nbn:de:bsz:31-271881)

F. Prume, Op. 3.

ANDANTE
et
RONDINO.

Tutti. *dimin.* *Solo.* 3

ff *pp* *ff* *pp*

pp

Rondino moderato.

pp

Tutti. *ff*

Solo. *pp*

VIOLINO 2º

Tutti.
ff

Solo.
f *pp*

f *pp*

20

7

VIOLINO 2º

1

1

~~12~~

pp

11 #

pp

Tutti.

ff

pp

1

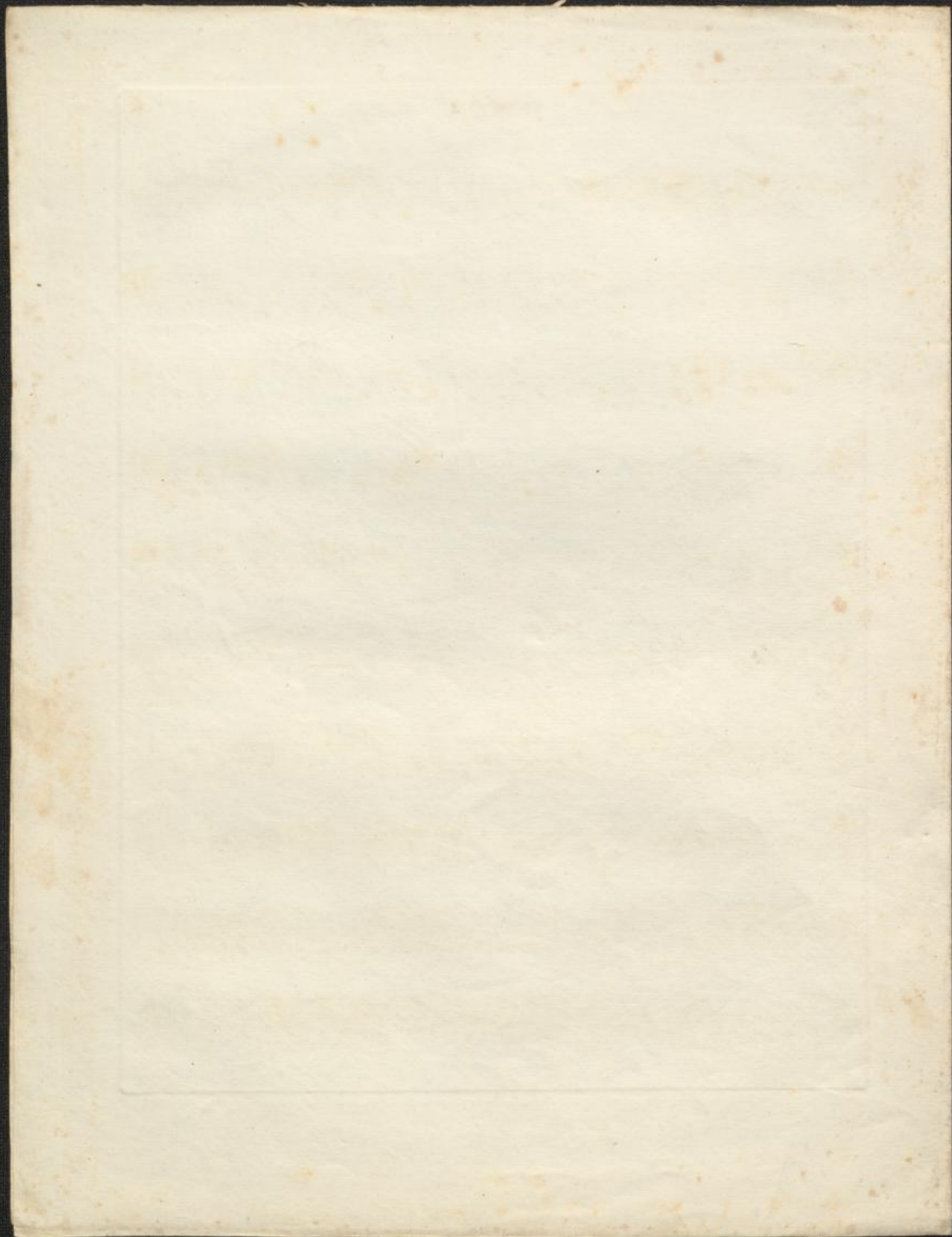
1

11

Tutti.

ff

Fine.





Violino III^o

Tutti.

Handwritten musical notation for Violino III^o, *Tutti.* section. It consists of three staves of music in G major (one sharp) and 2/4 time. The first staff begins with a treble clef, a key signature of one sharp (F#), and a 2/4 time signature. The music features a mix of eighth and sixteenth notes, with some chords. A dynamic marking of *f* (forte) is present. The second staff continues the melodic line. The third staff includes a *pizz:* (pizzicato) marking and a *ritar:* (ritardando) marking. The section concludes with a *arco!* (arco) marking.

Adagio. Solo.

Handwritten musical notation for Violino III^o, *Adagio. Solo.* section. It consists of seven staves of music in G major and 2/4 time. The first staff begins with a treble clef, a key signature of one sharp (F#), and a 2/4 time signature. The music is characterized by a slower tempo and features a mix of eighth and sixteenth notes, with some chords. A dynamic marking of *f* (forte) is present. The section concludes with a *tremolo.* marking.

tremolo.

Tempo. mino

Handwritten musical notation for Violino III^o, *Tempo. mino* section. It consists of two staves of music in G major and 2/4 time. The first staff begins with a treble clef, a key signature of one sharp (F#), and a 2/4 time signature. The music features a mix of eighth and sixteenth notes, with some chords. A dynamic marking of *pizz:* (pizzicato) is present. The section concludes with a red scribble.

