

# **Badische Landesbibliothek Karlsruhe**

**Digitale Sammlung der Badischen Landesbibliothek Karlsruhe**

## **Der Maschinenbau**

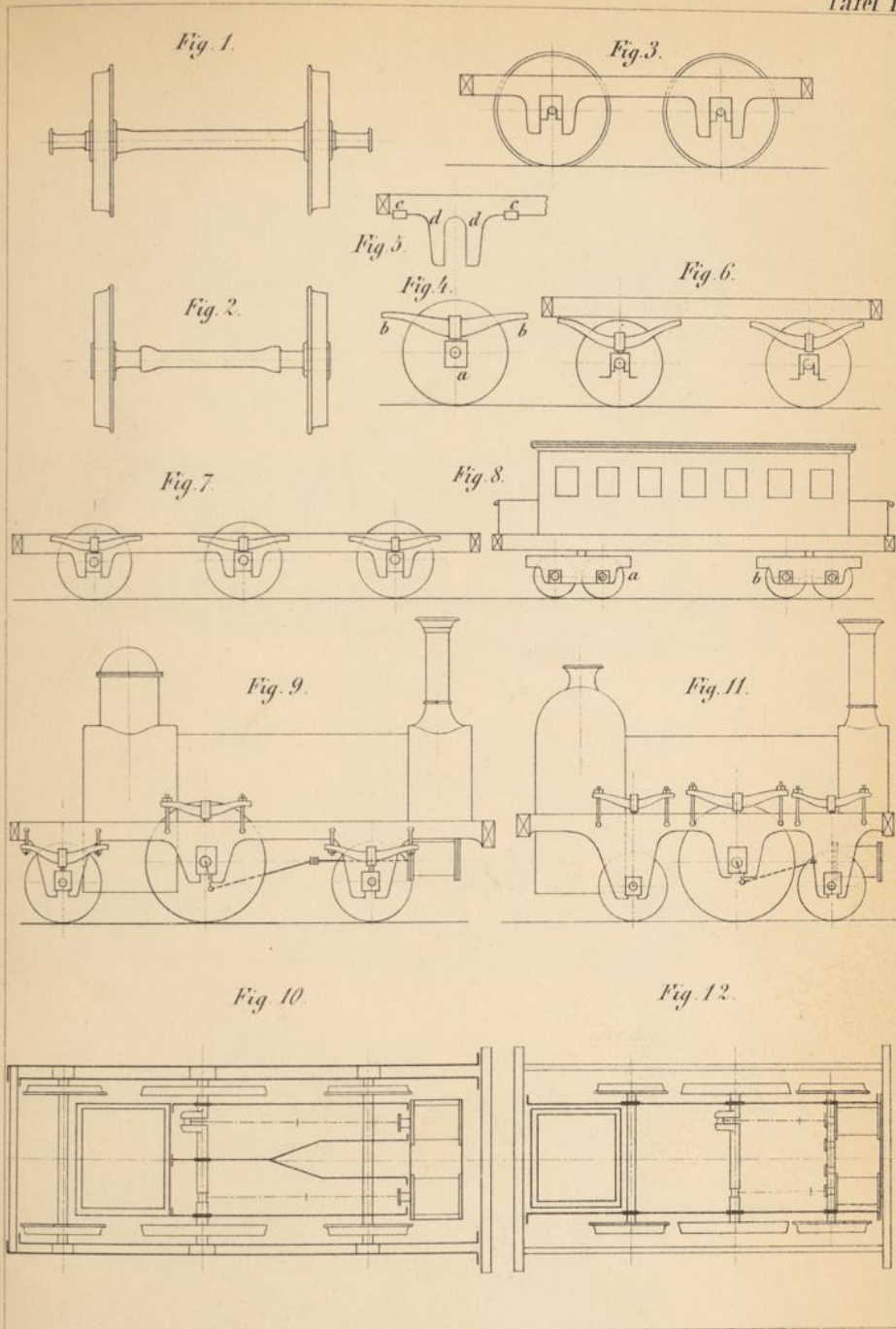
Tafeln zu Bd. 1 - 3

**Redtenbacher, Ferdinand**

**Mannheim, 1862 - 1865**

[Band 3]

[urn:nbn:de:bsz:31-278587](https://nbn-resolving.org/urn:nbn:de:bsz:31-278587)



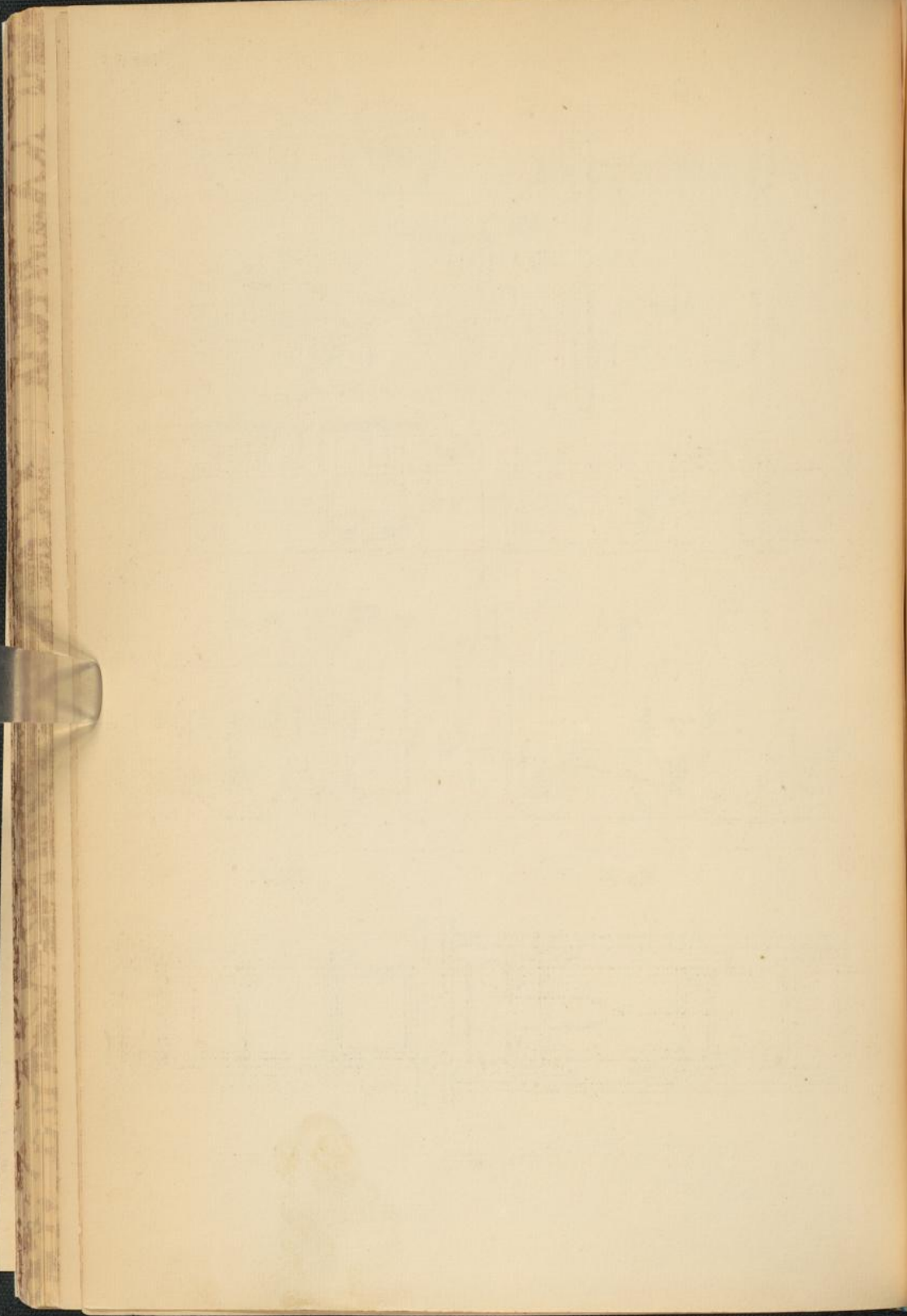


Fig. 1.

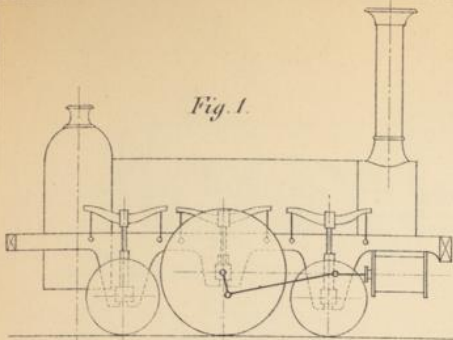


Fig. 3.

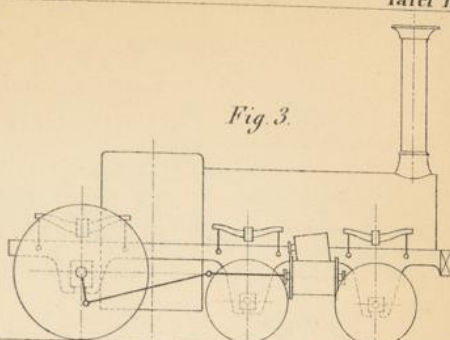


Fig. 2.

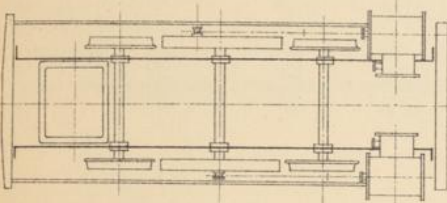


Fig. 4.

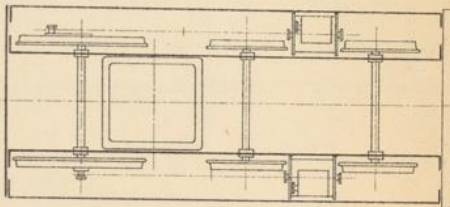


Fig. 5.

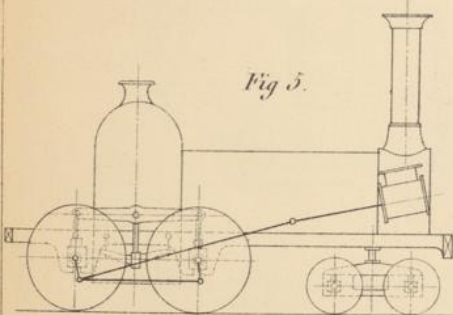


Fig. 7.

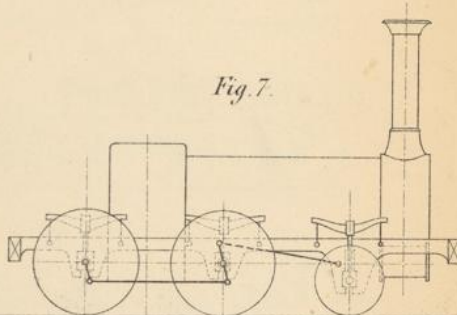


Fig. 6.

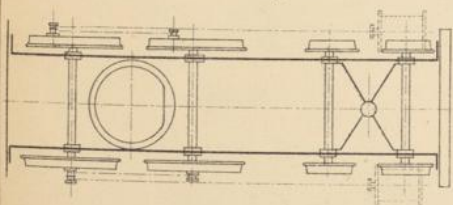
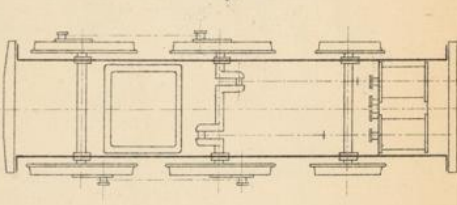


Fig. 8.





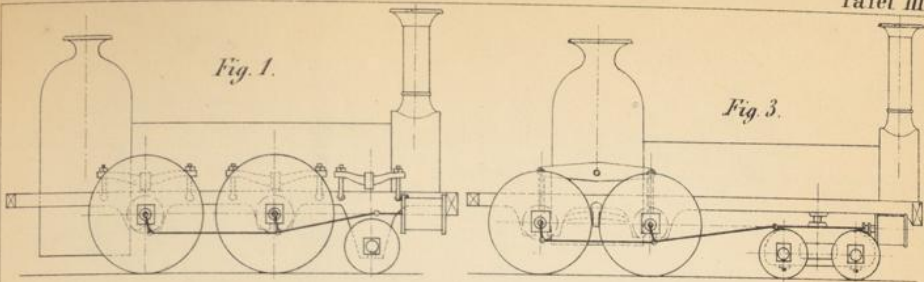


Fig. 1.

Fig. 3.

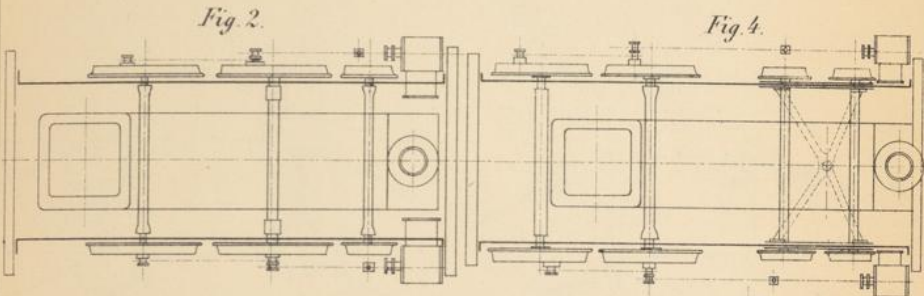


Fig. 2.

Fig. 4.

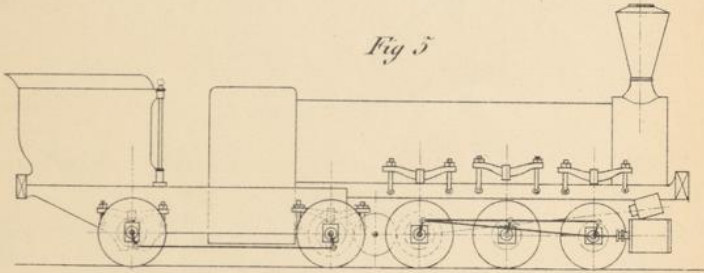


Fig. 5.

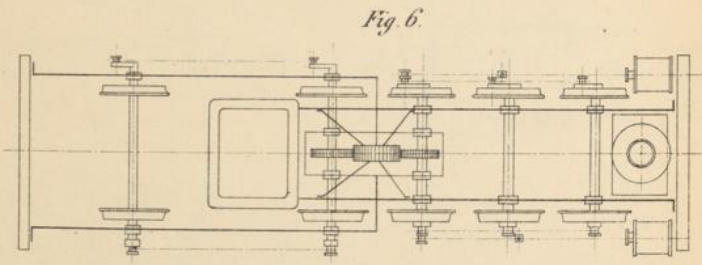


Fig. 6.

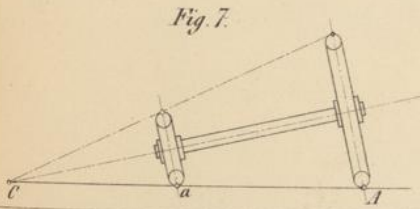


Fig. 7.

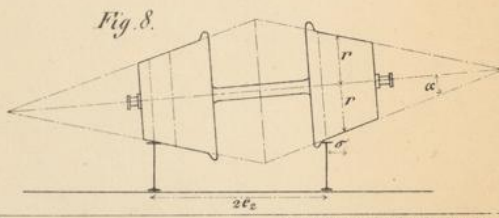


Fig. 8.

III.

lith. L. Geisenhöfer, Carlsruhe



Fig. 1.

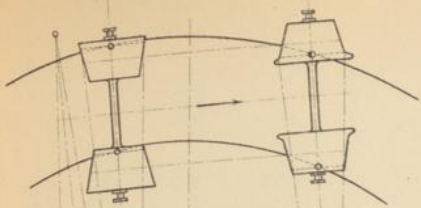


Fig. 4.

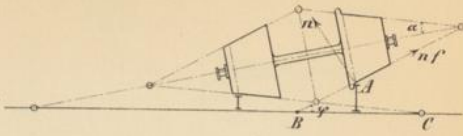


Fig. 2.

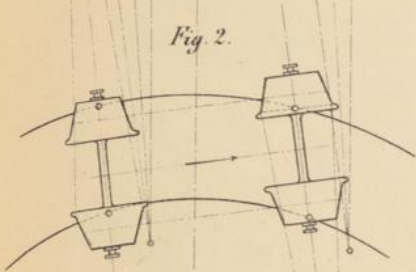


Fig. 5.

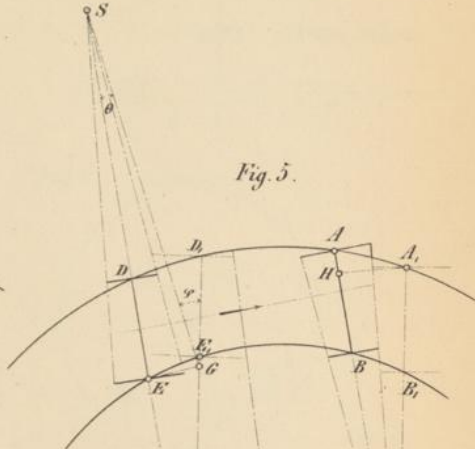


Fig. 3.

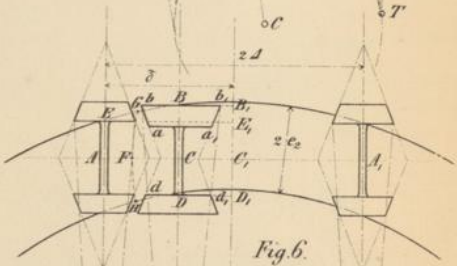
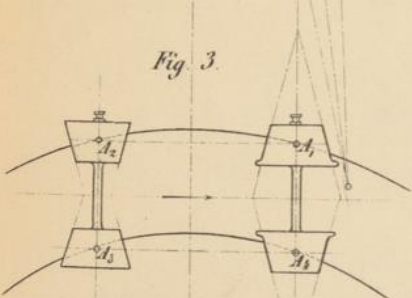
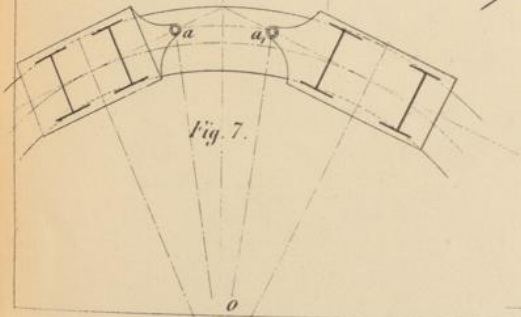


Fig. 6.

Fig. 7.

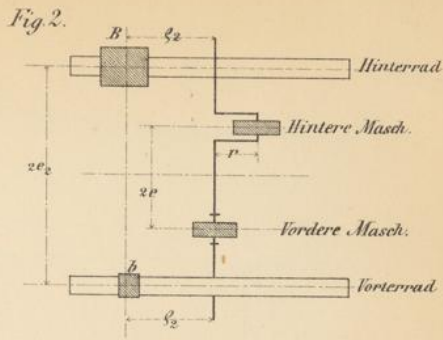
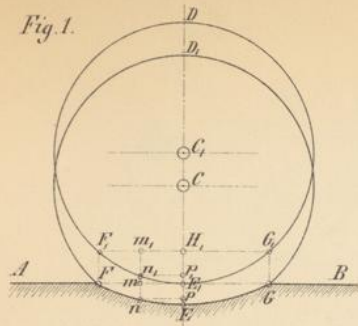


III.

Lith. L. Geisendörfer, Karlsruhe







Hinterrad Fig. 3.

Vorderrad Fig. 4.

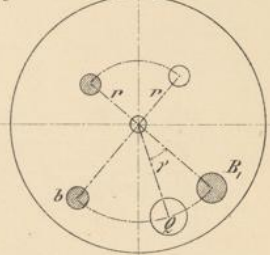
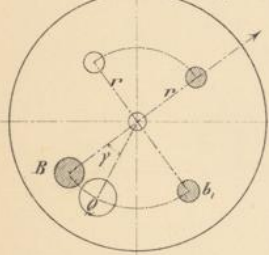


Fig. 5. Hinterrad

Vorderrad Fig. 6.

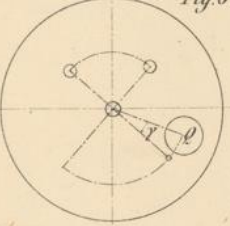
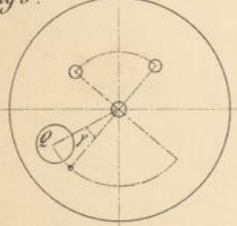


Fig. 7.

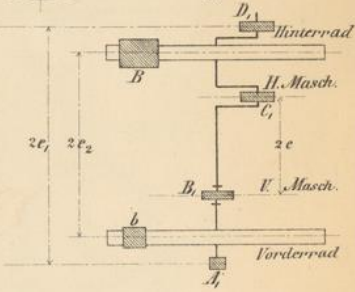


Fig. 8. Hinterrad

Vorderrad Fig. 9.

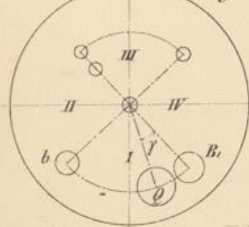
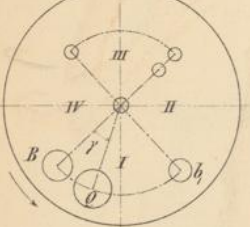


Fig. 10.

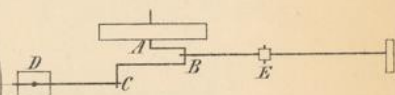
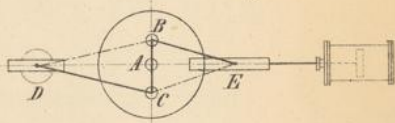
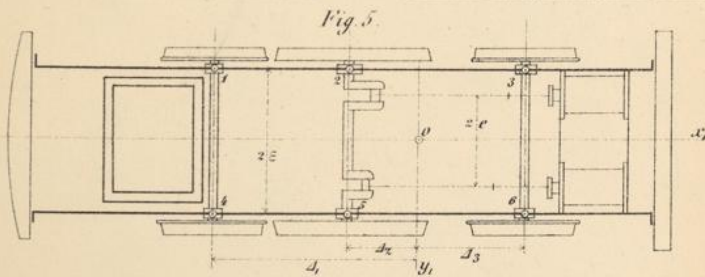
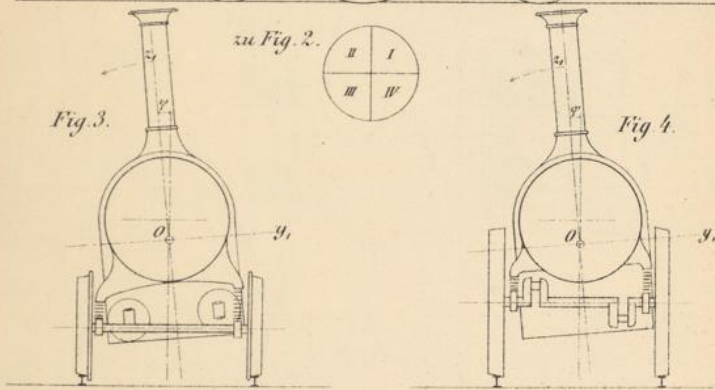
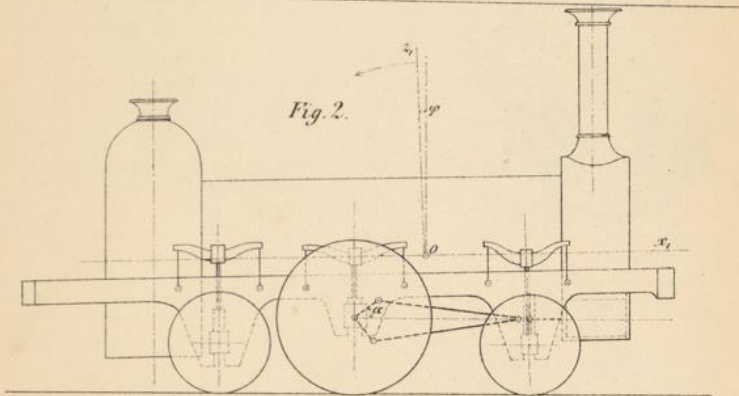
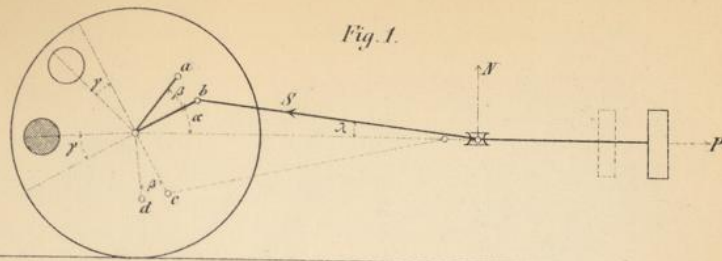


Fig. 11.









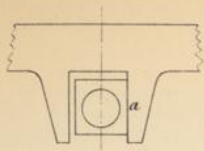


Fig. 1.

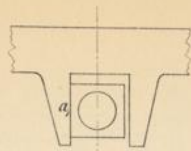


Fig. 2.

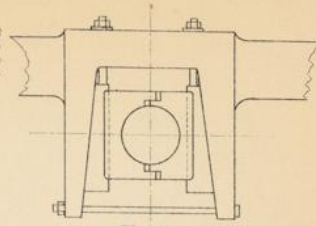


Fig. 3.

Fig. 4.

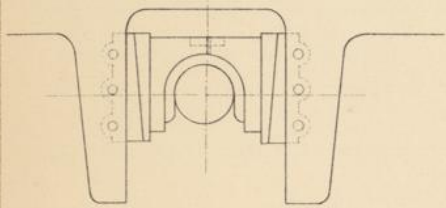


Fig. 5.

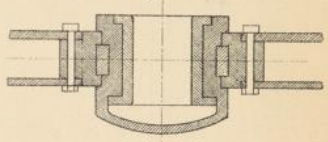


Fig. 6.

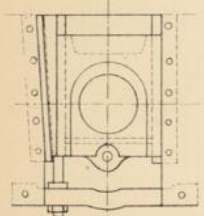


Fig. 7.

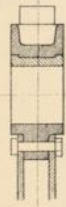


Fig. 8.

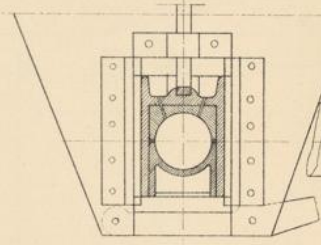


Fig. 9.

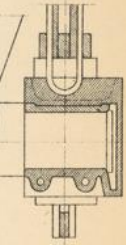


Fig. 10.

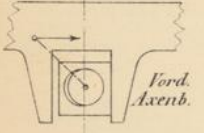


Fig. 11.

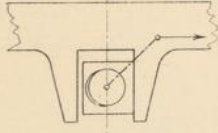


Fig. 12.

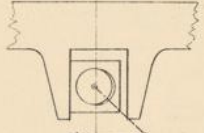


Fig. 13.

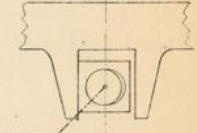


Fig. 14.

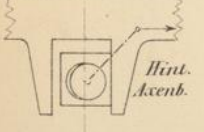


Fig. 15.



Fig. 16.

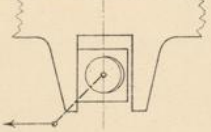


Fig. 17.

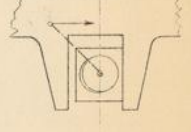




Fig. 1.

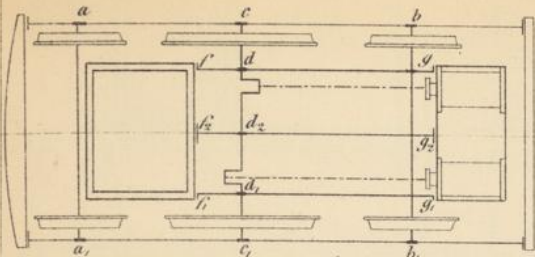


Fig. 5.

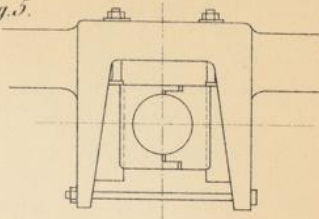


Fig. 2.

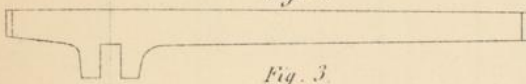


Fig. 3.

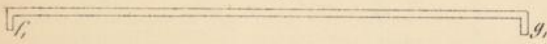


Fig. 4.

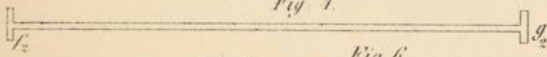


Fig. 6.



Fig. 7.

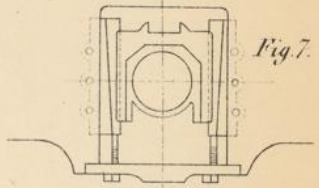


Fig. 8.

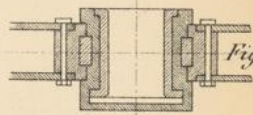


Fig. 9.

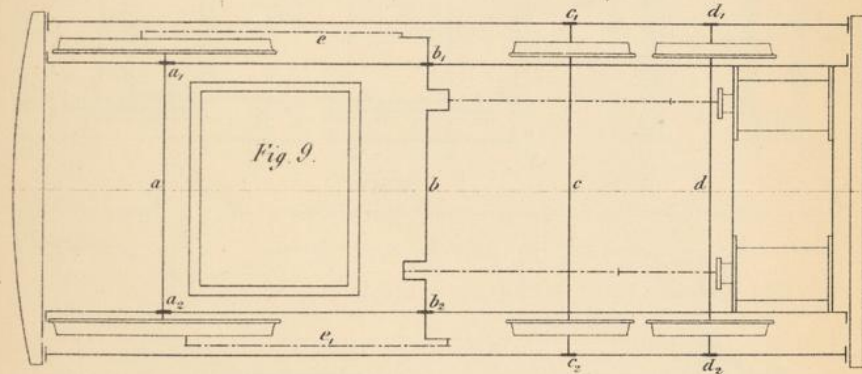
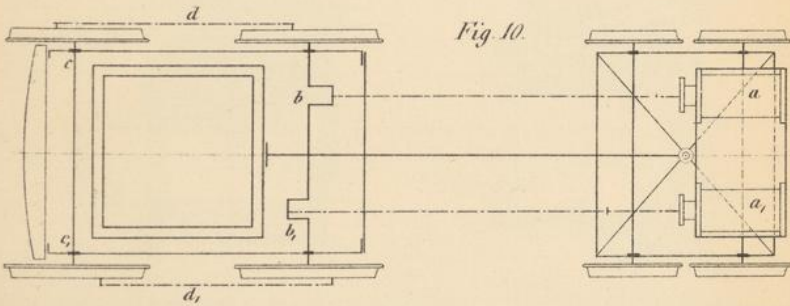
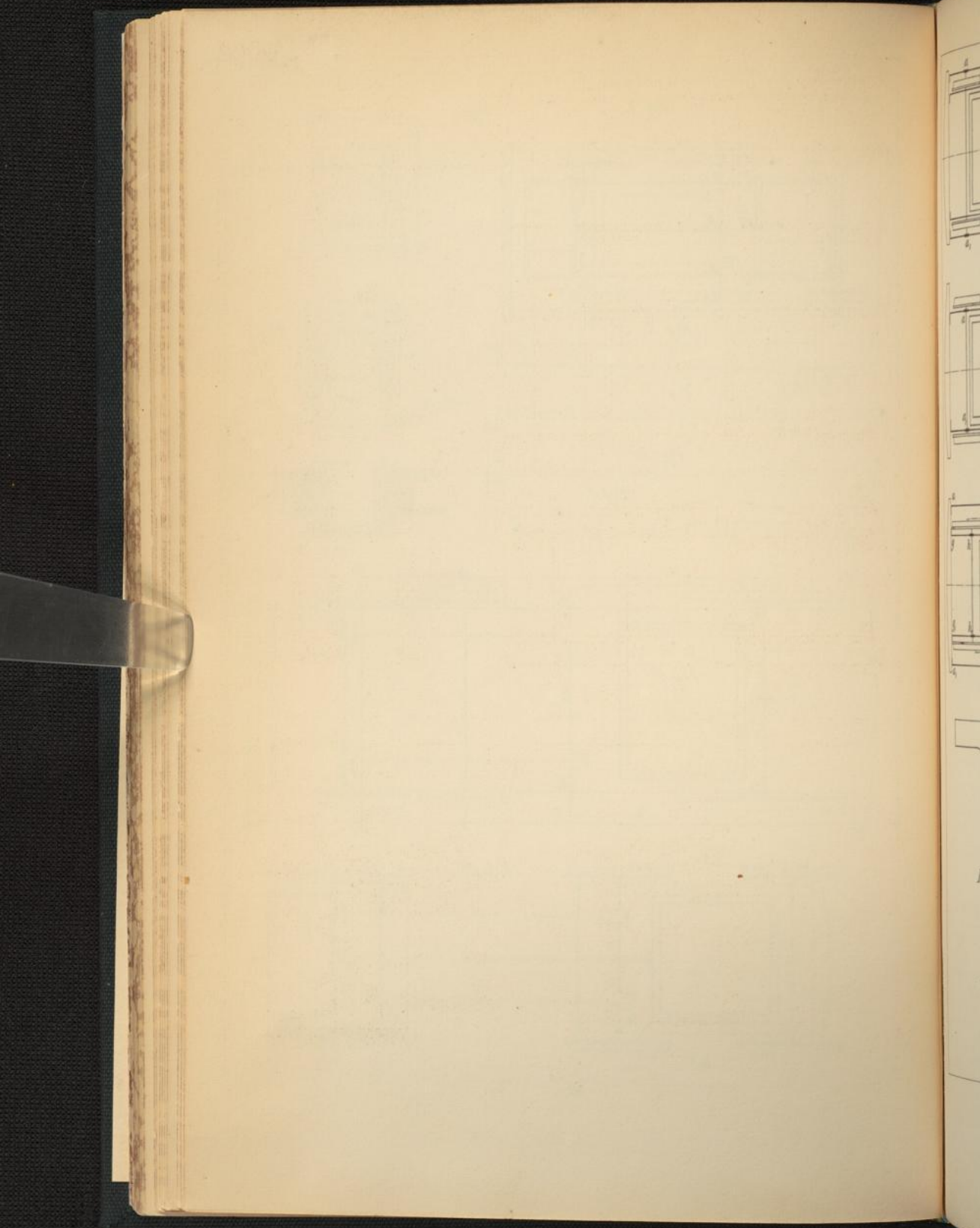
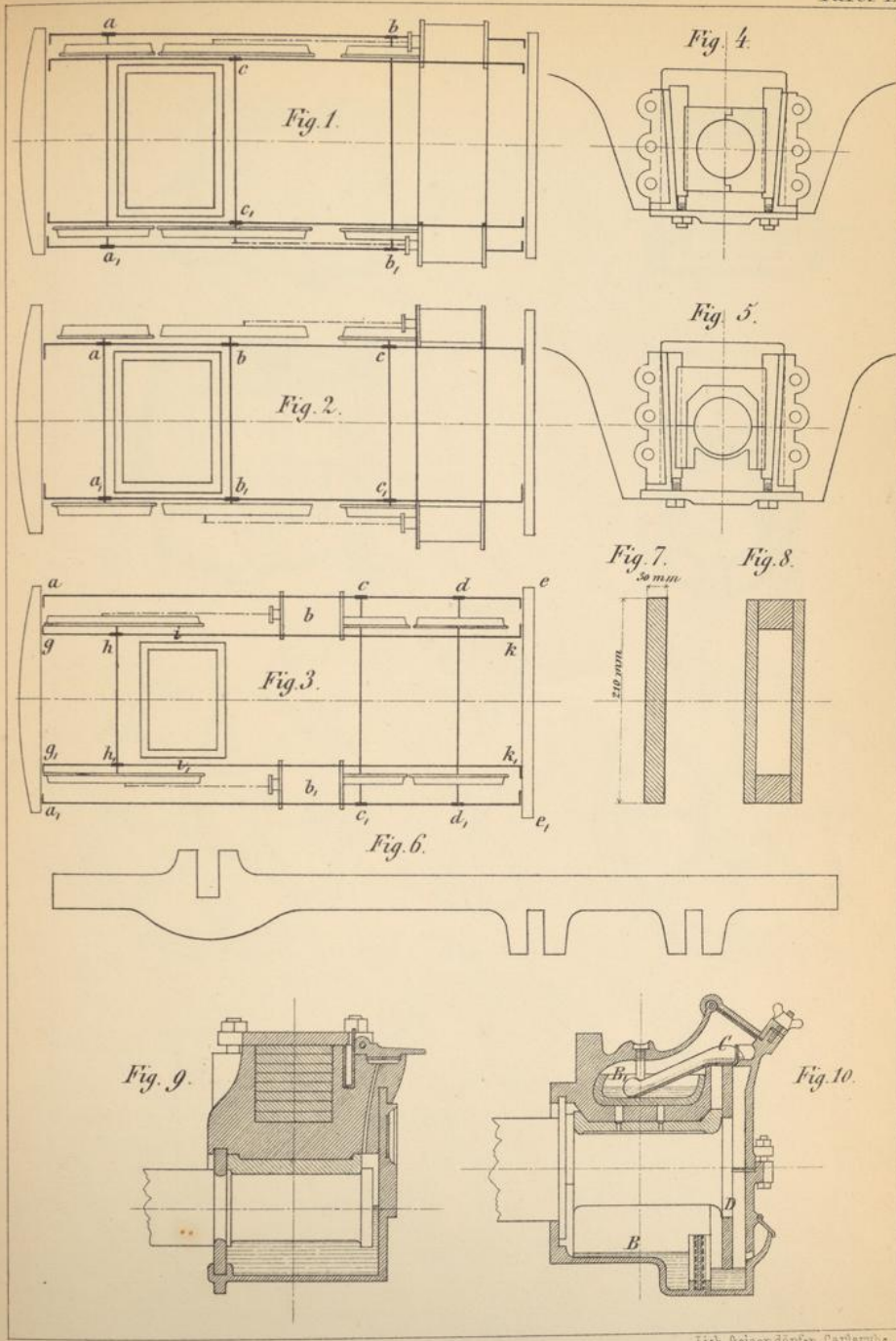


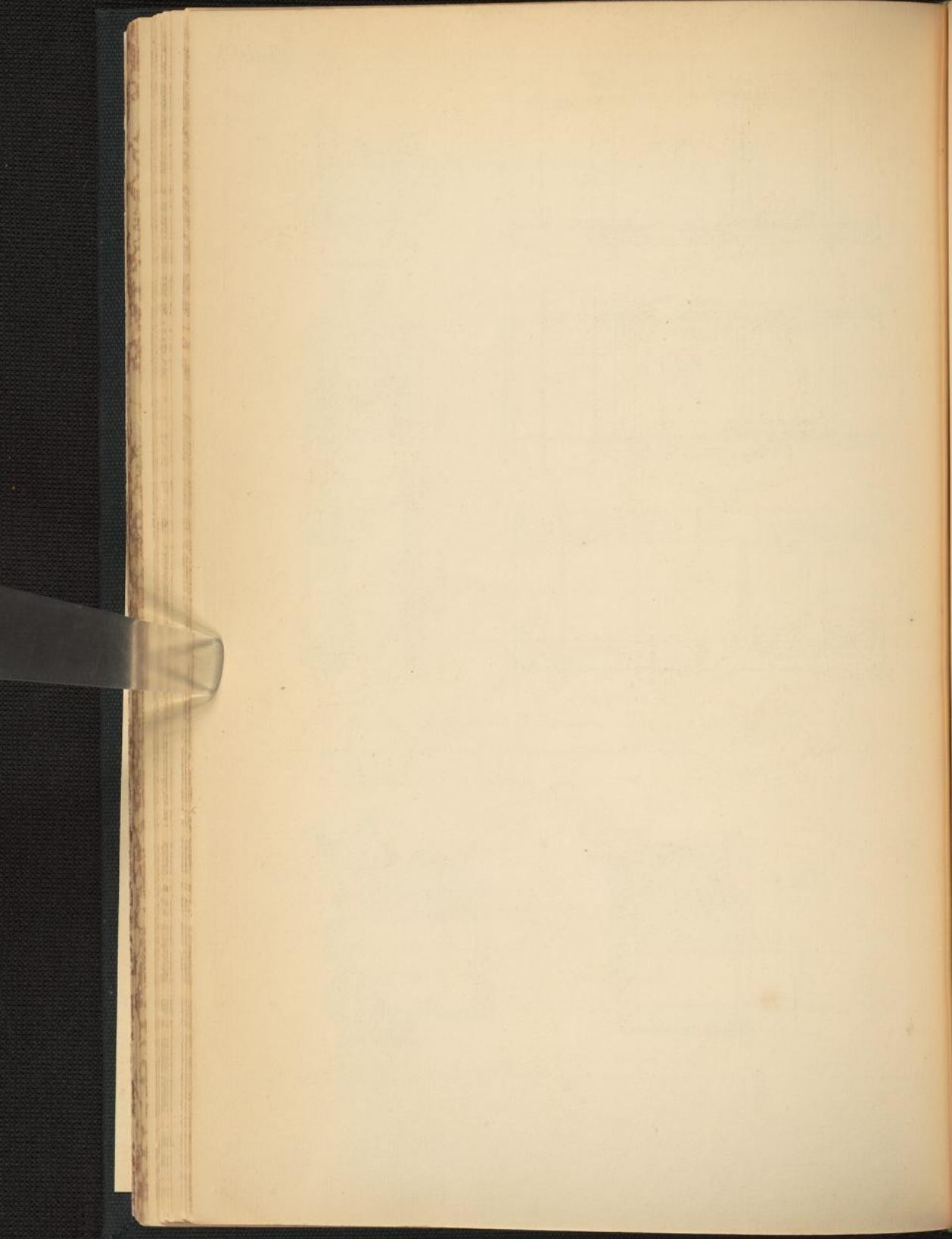
Fig. 10.











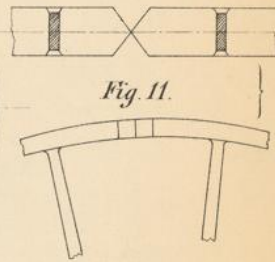
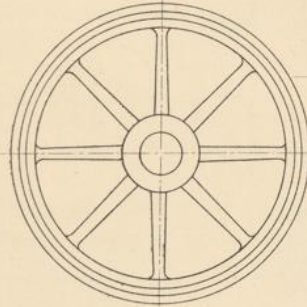
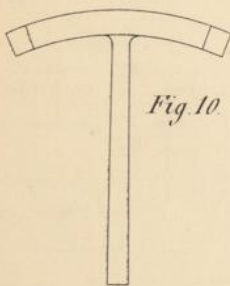
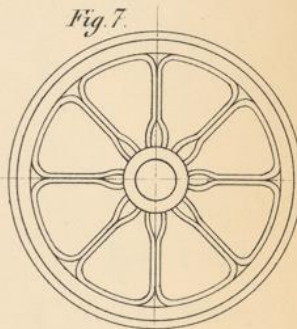
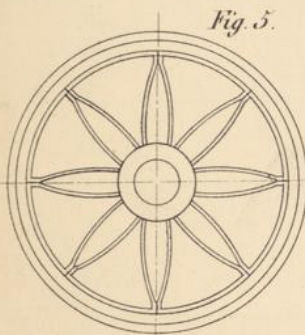
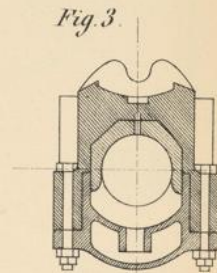
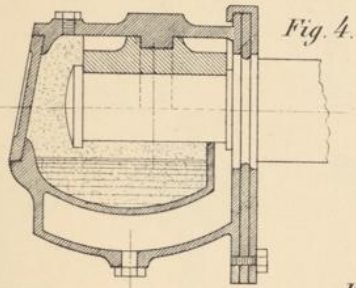
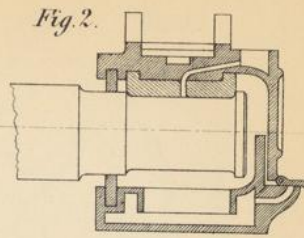
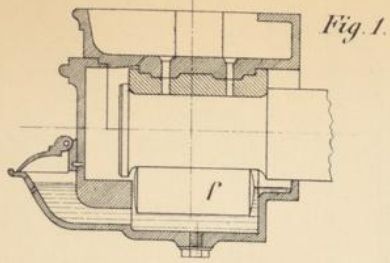




Fig. 1.

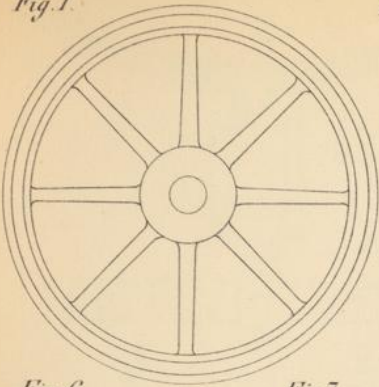


Fig. 2.

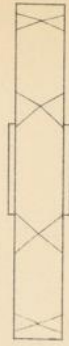


Fig. 3.

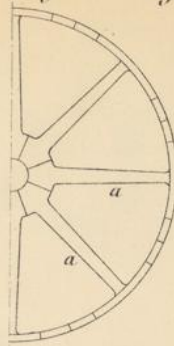


Fig. 4.

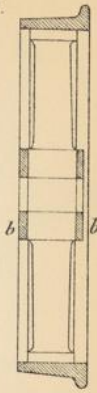


Fig. 6.

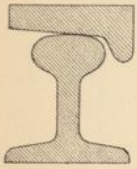


Fig. 7.

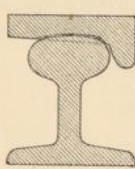


Fig. 8.

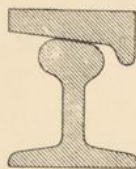


Fig. 5.

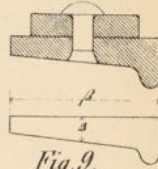


Fig. 10.

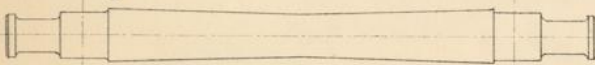


Fig. 11.

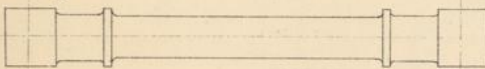


Fig. 12.

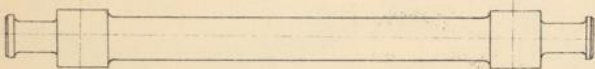


Fig. 13.

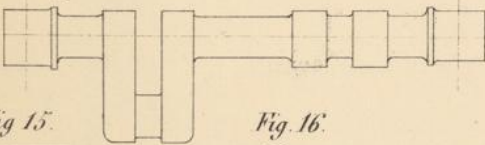


Fig. 15.

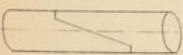


Fig. 16.



Fig. 17.

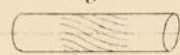
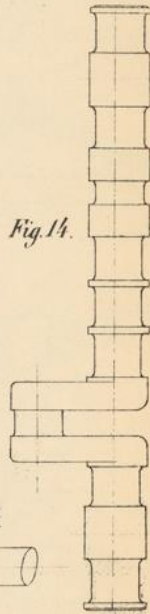
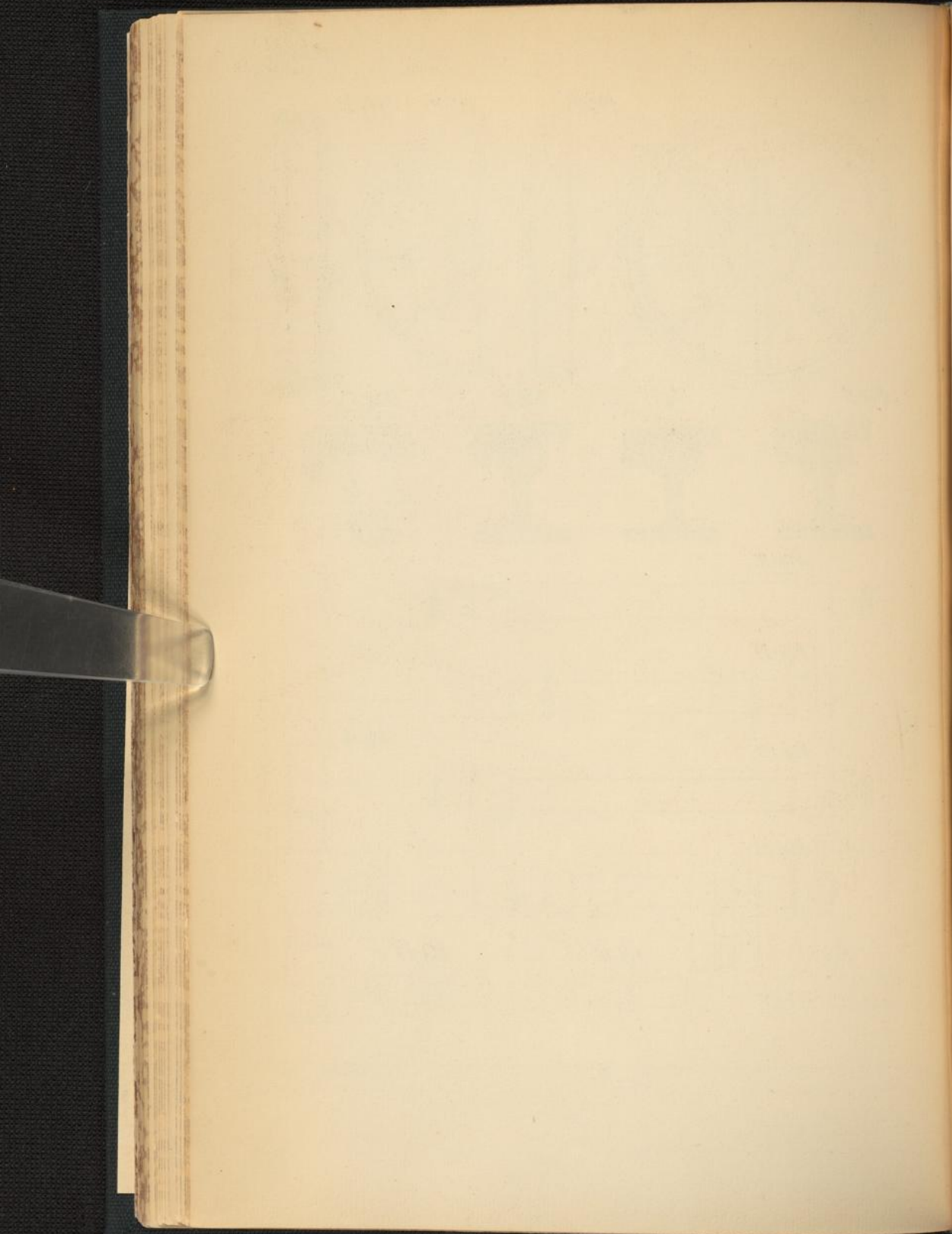


Fig. 14.





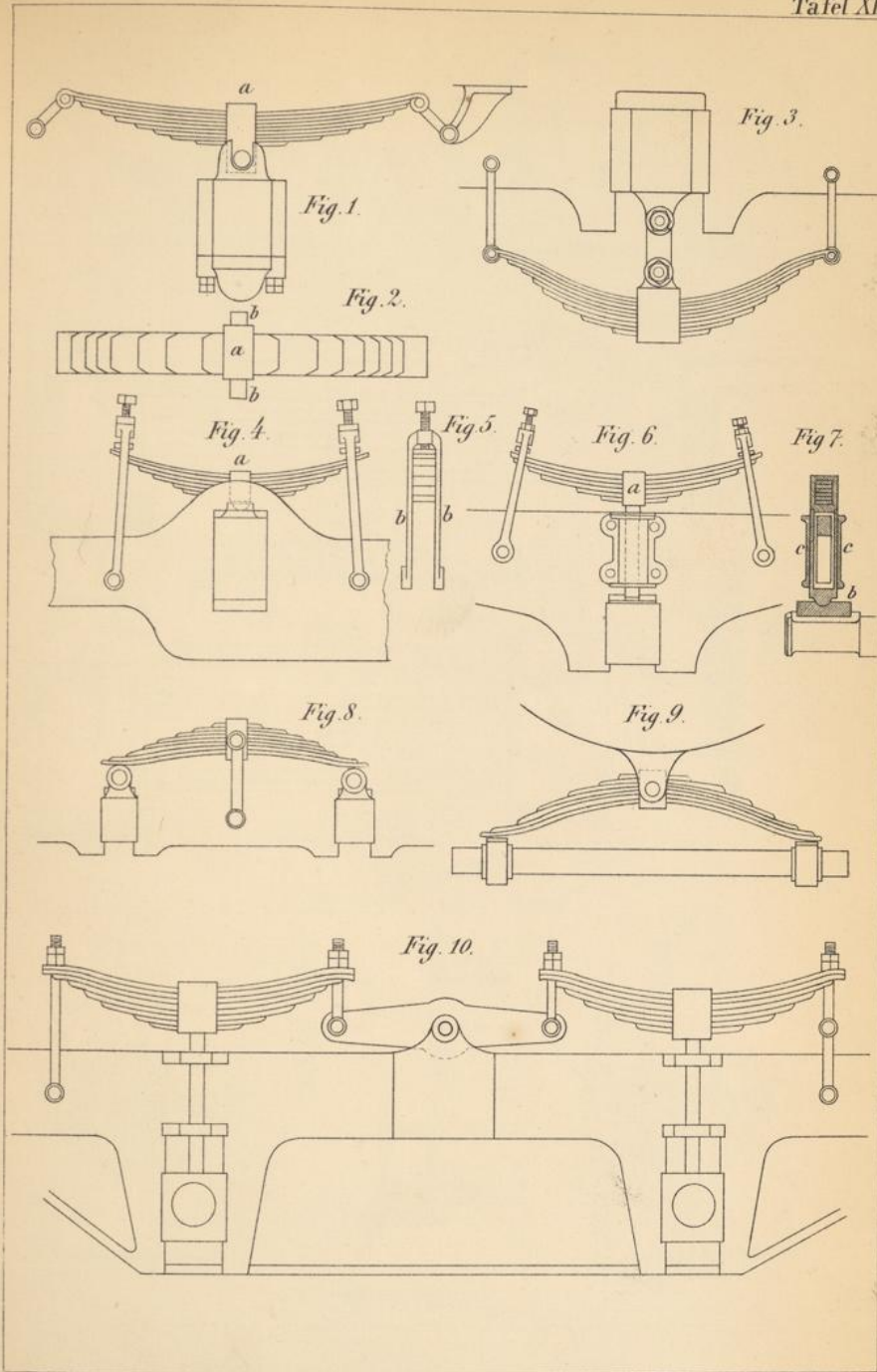






Fig. 1.

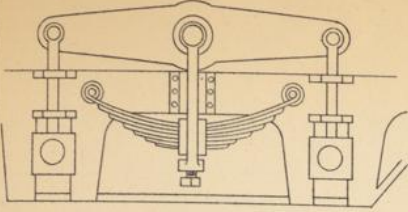


Fig. 2.

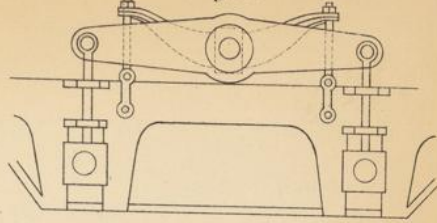


Fig. 3.



Fig. 7.

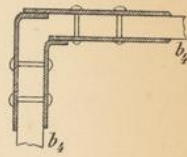


Fig. 9.

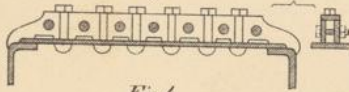


Fig. 4.

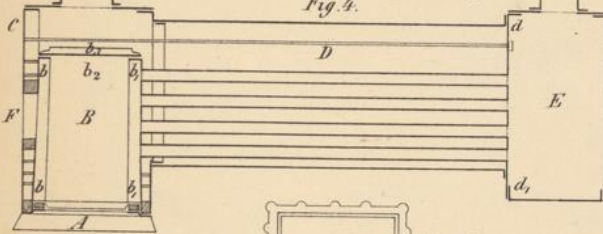


Fig. 8.



Fig. 10.

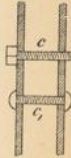


Fig. 13.



Fig. 5.

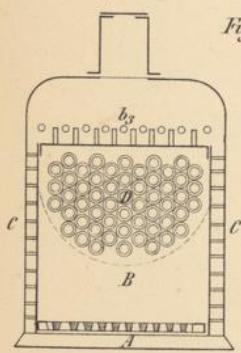


Fig. 11.

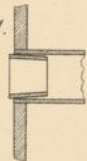


Fig. 12.

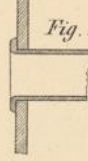


Fig. 6.

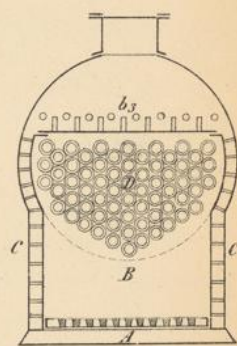
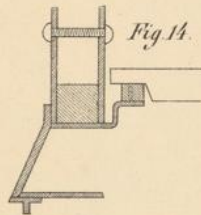


Fig. 14.



Lith. H. Geisendorfer, Karlsruhe



Fig. 1.

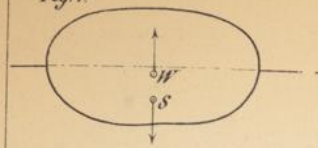


Fig. 2.

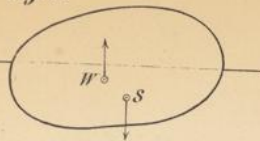


Fig. 3.

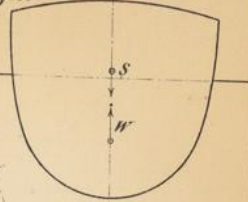


Fig. 4.

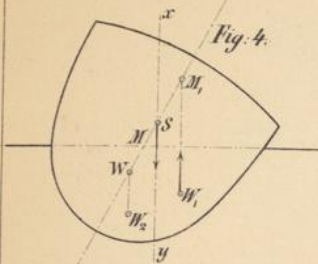


Fig. 5.

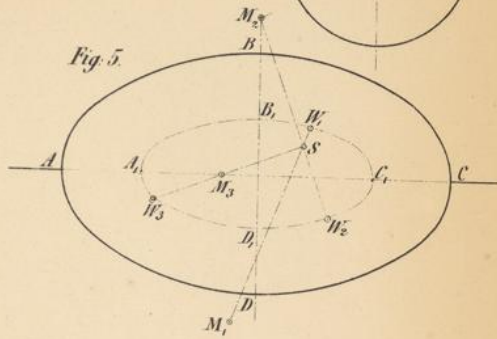


Fig. 6.

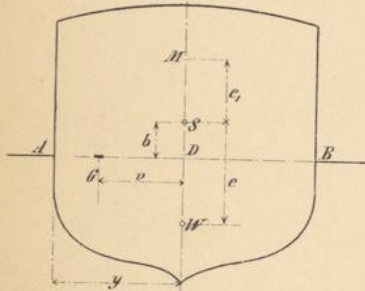


Fig. 7.

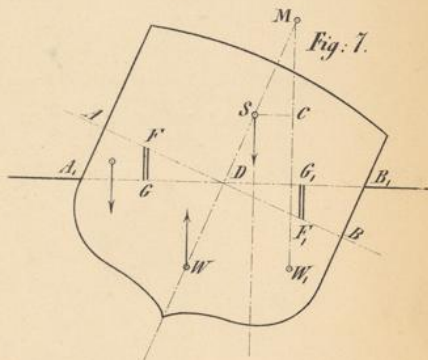
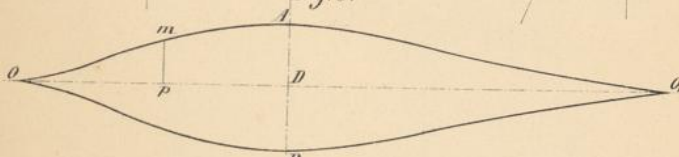


Fig. 8.



Ver. 10 8 6 4 2 0 20 18 16 14 12 10 deck

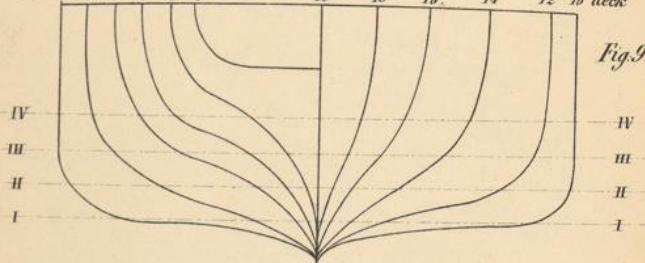
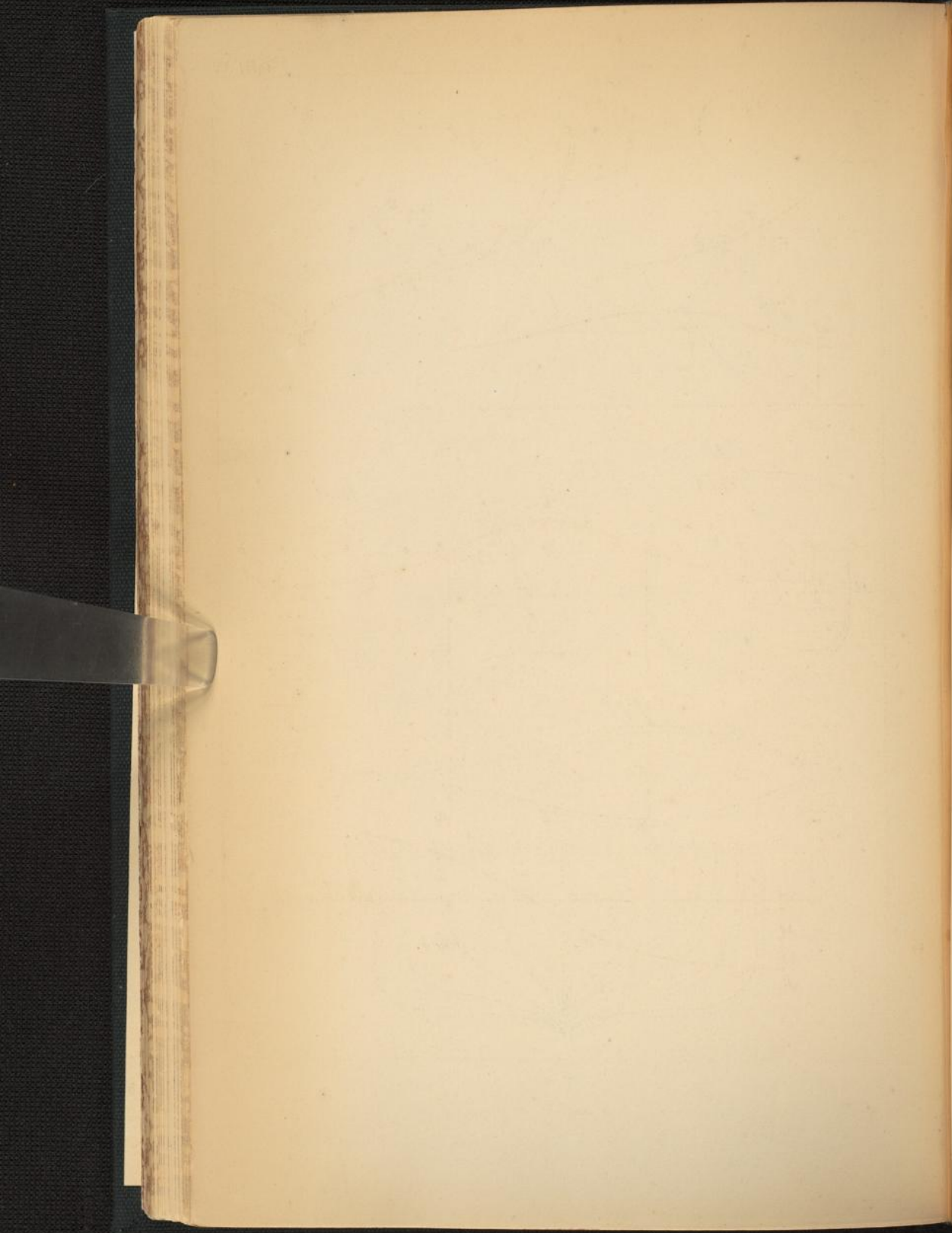
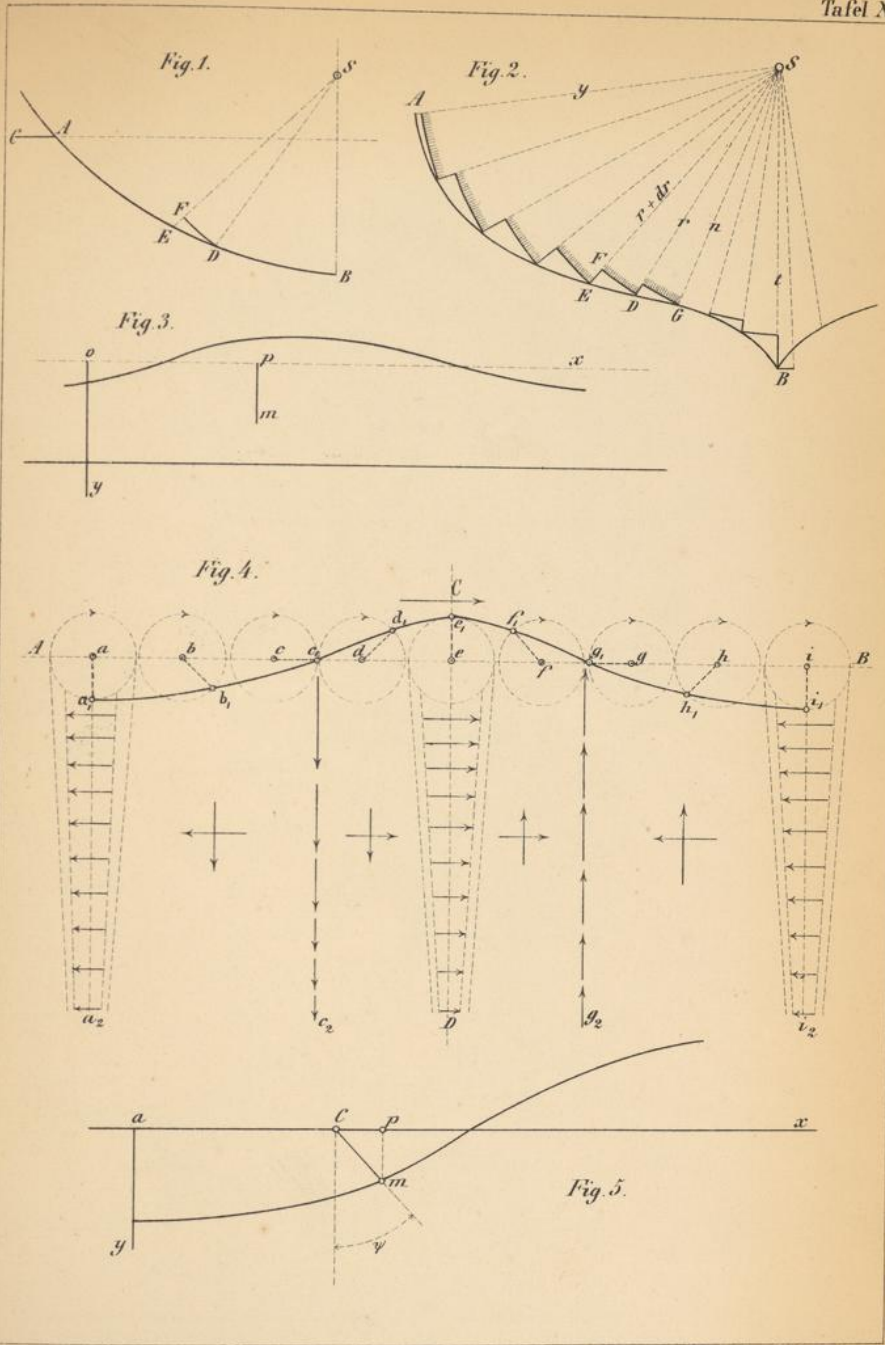


Fig. 9.

Lith. L. Gessendörfer





Lith. L. Geisendorfer, Carlsruhe.



Fig. 1.

Gelassene Wellen.  
(gestreckte Cycloide.)

$\zeta = \frac{1}{3} \lambda$

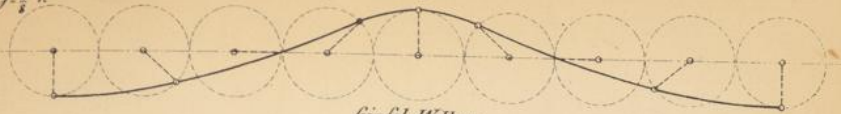


Fig. 2.

Gipfel Wellen.  
(gestreckte Cycloide)

$\zeta = \frac{1}{3} \lambda$

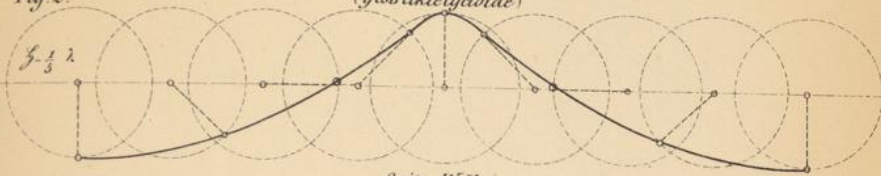


Fig. 3.

Spitz-Wellen  
(Cycloide.)

$\zeta = \frac{1}{3} \lambda$

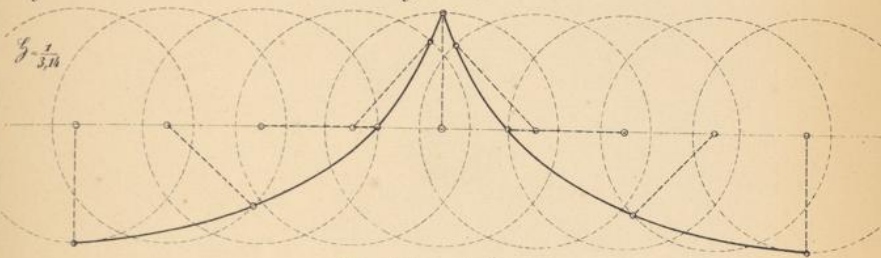


Fig. 4.

Überschlagende Wellen  
(geschlungene Cycloide)

$\zeta = \frac{1}{2} \lambda$

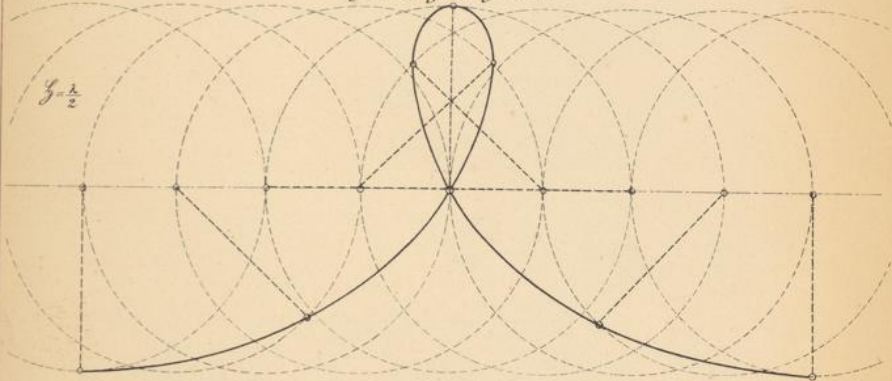


Fig. 5.

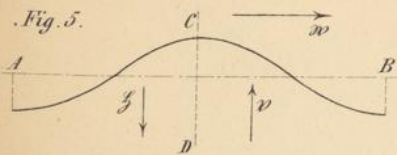
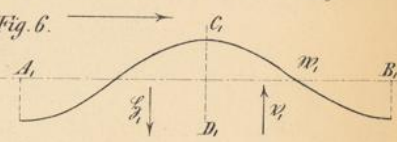


Fig. 6.



Lith. L. Geisenh. dorf, Carlsruhe





Fig. 1.

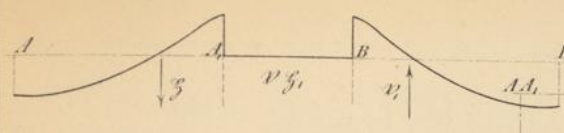


Fig. 2.

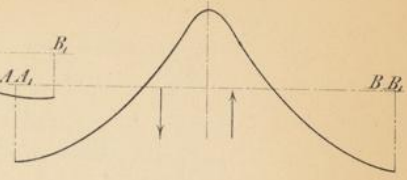


Fig. 3.

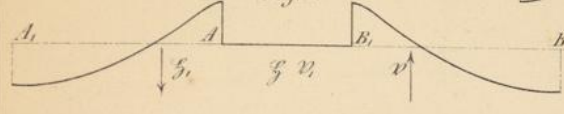


Fig. 6.

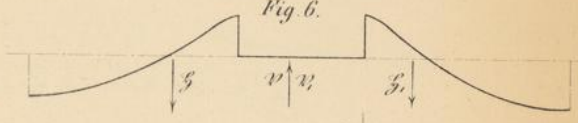


Fig. 4.

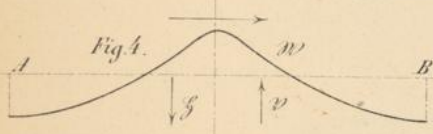


Fig. 5.

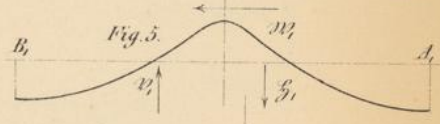


Fig. 8.

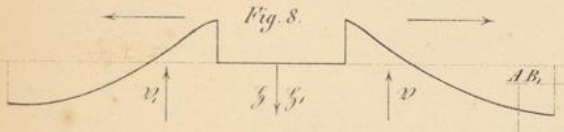


Fig. 7.

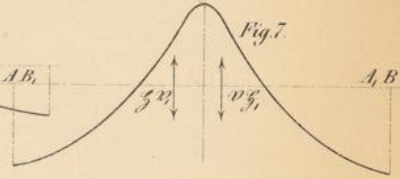


Fig. 9.

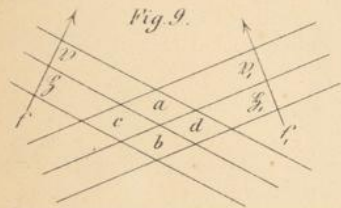


Fig. 10.

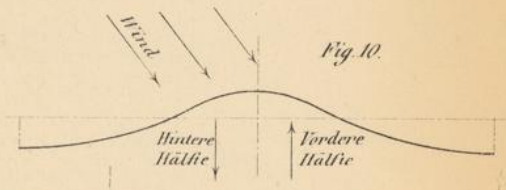


Fig. 11.

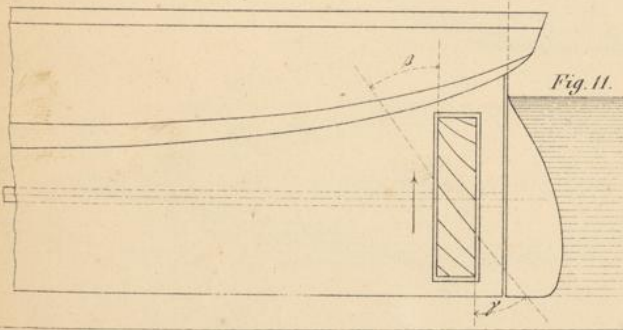
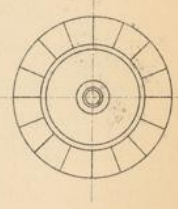
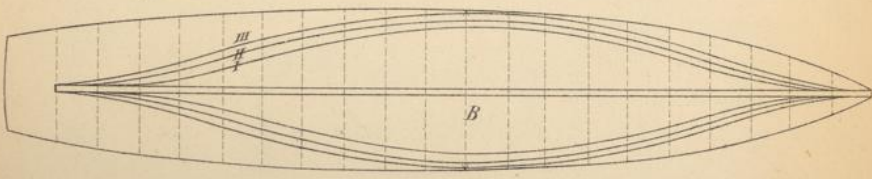
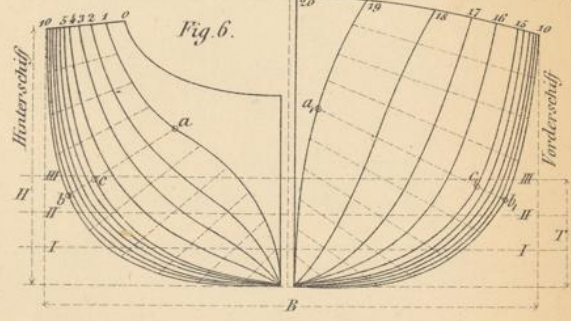
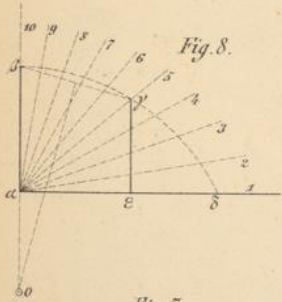
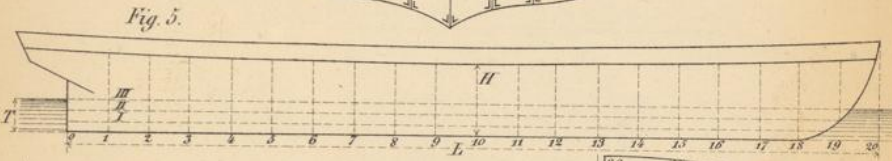
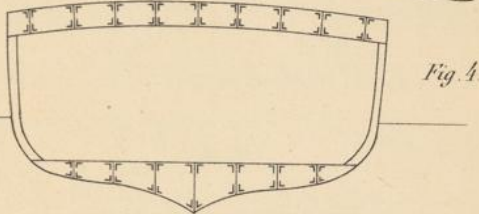
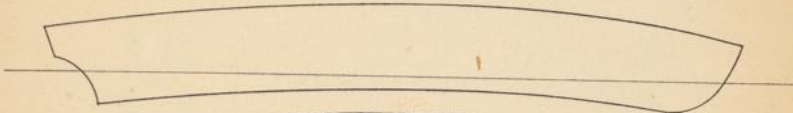
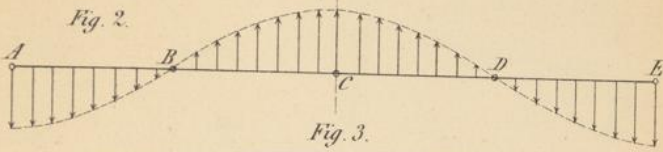
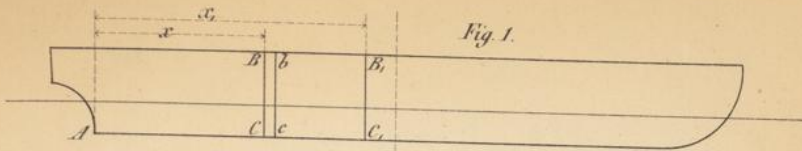


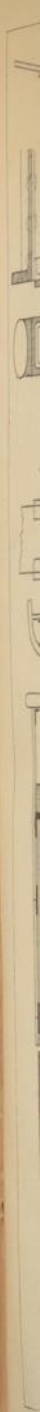
Fig. 12.

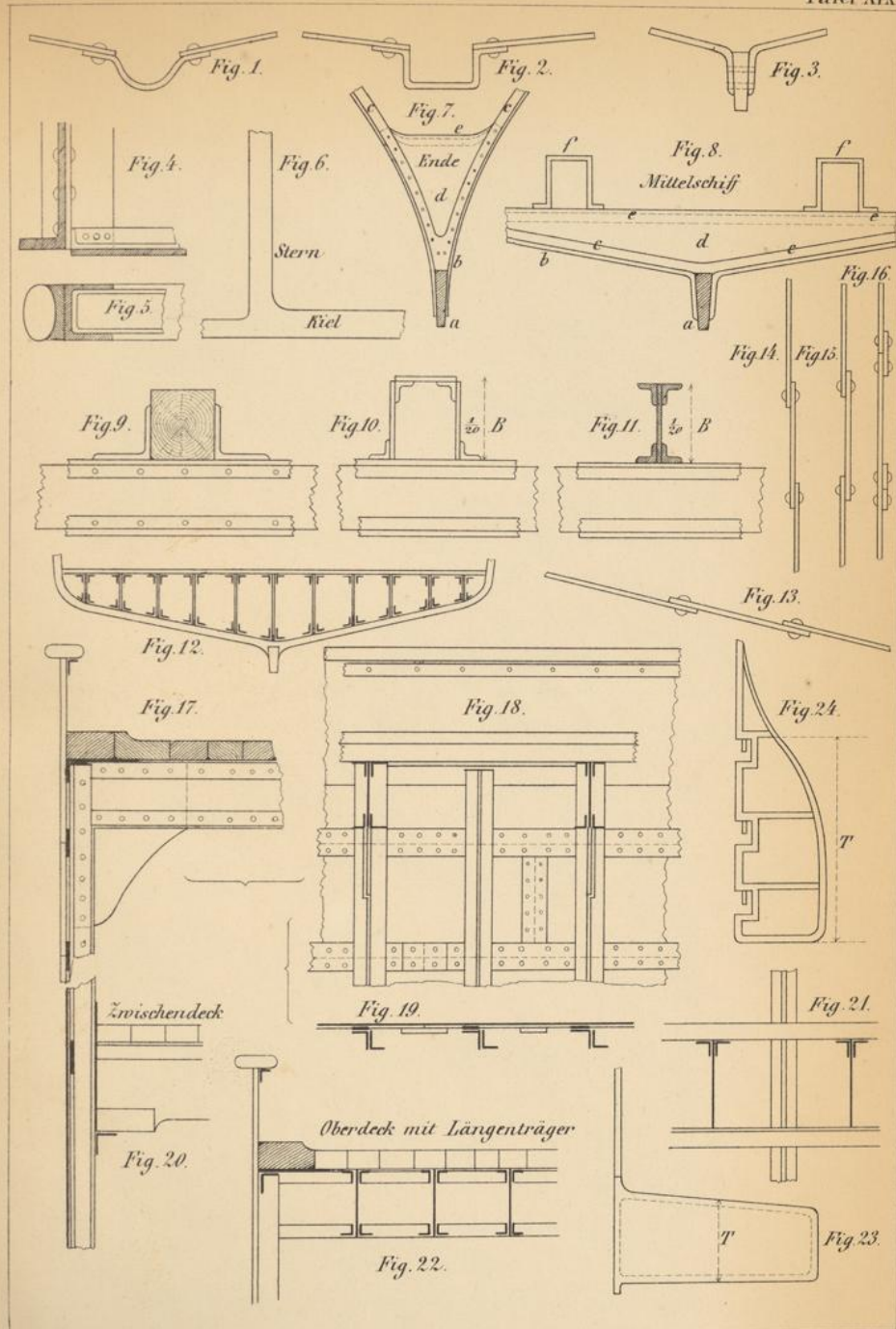


III











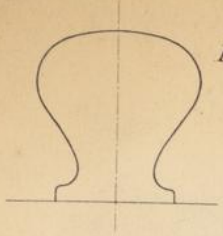


Fig. 1.



Fig. 4.

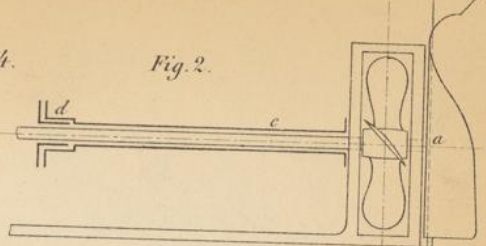


Fig. 2.

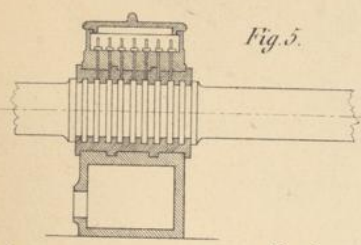


Fig. 5.

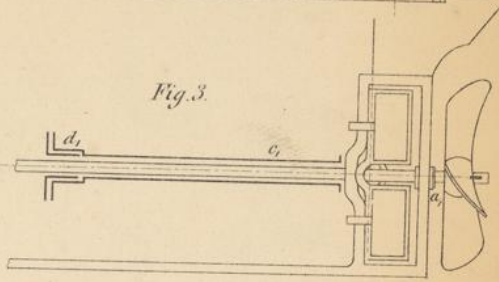


Fig. 3.

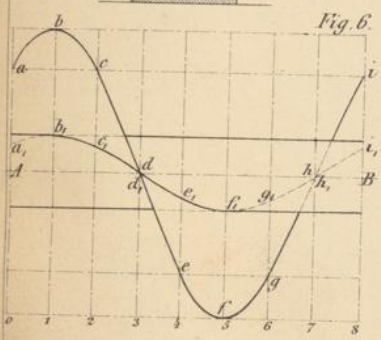


Fig. 6.

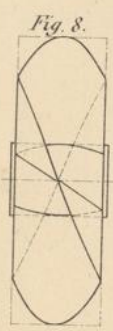


Fig. 8.



Fig. 9.

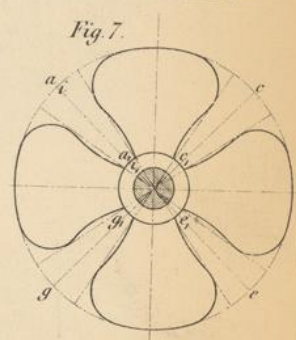


Fig. 7.

Fig. 10.

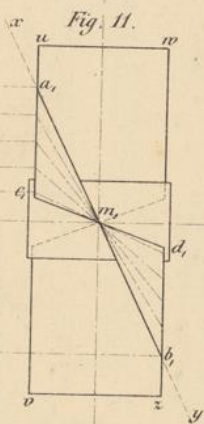
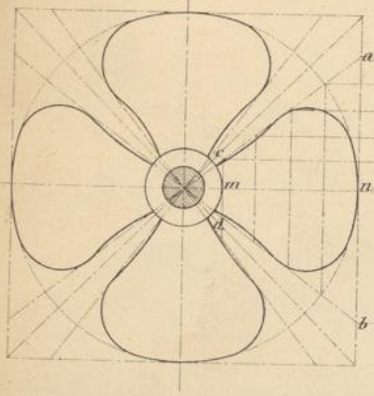
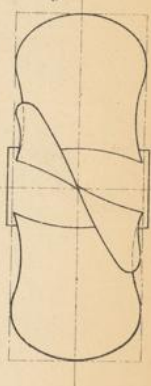


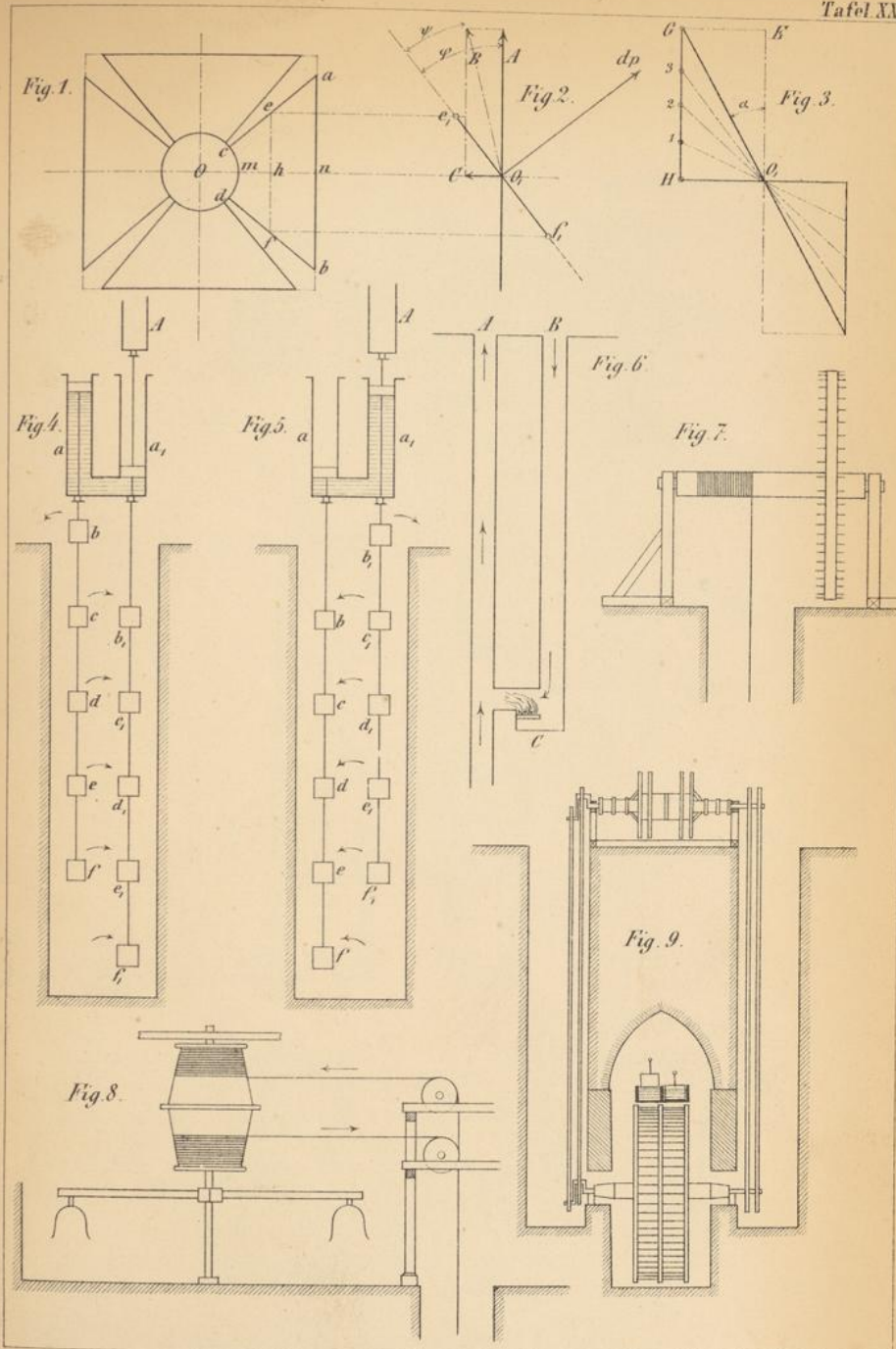
Fig. 11.

Fig. 12.

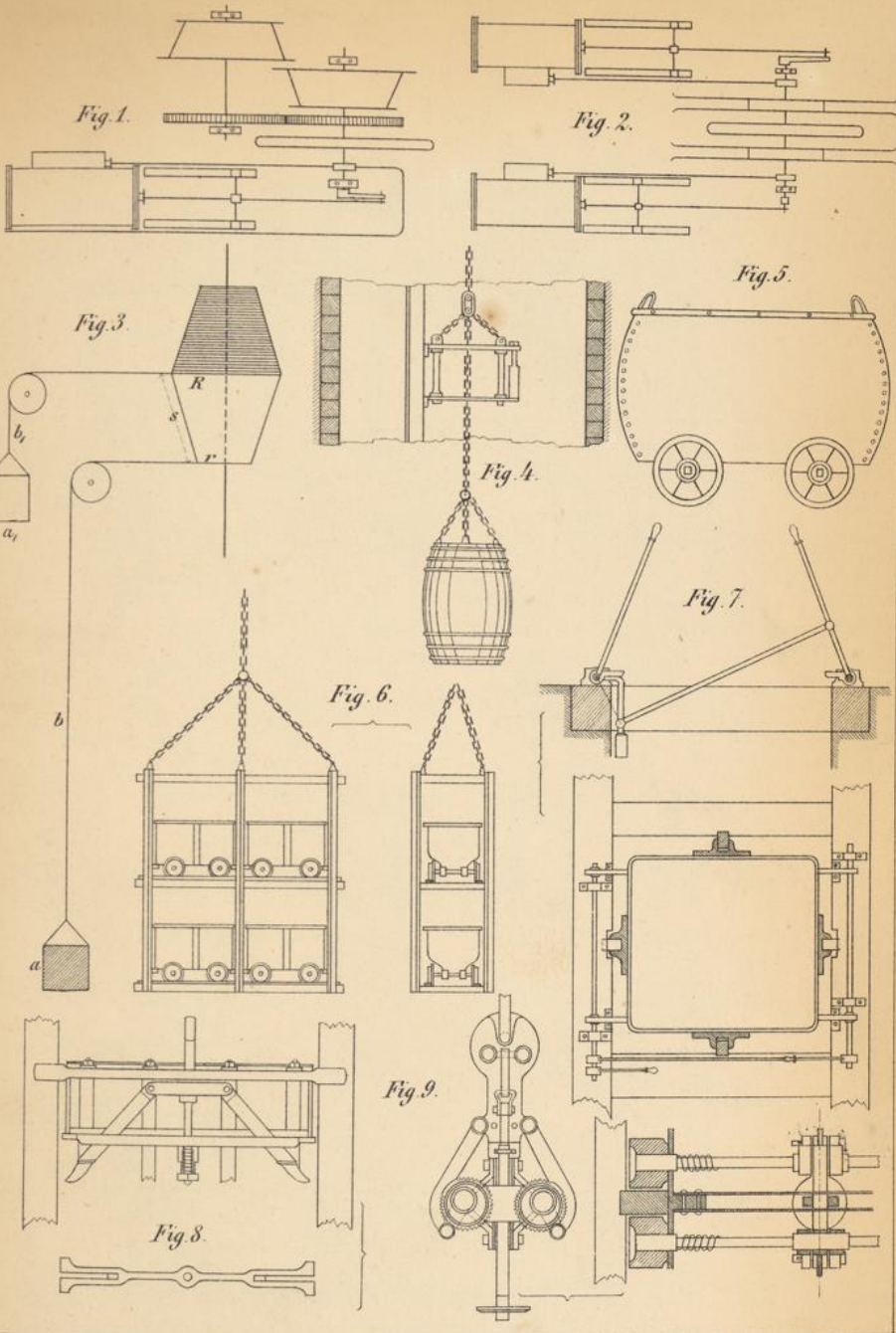














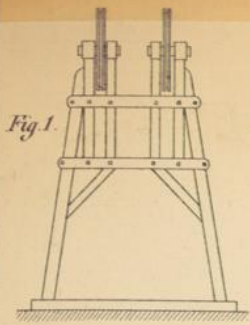


Fig. 1.

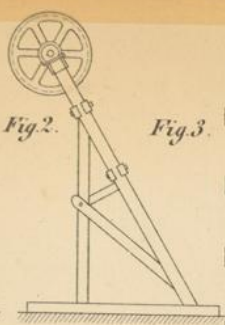


Fig. 2.

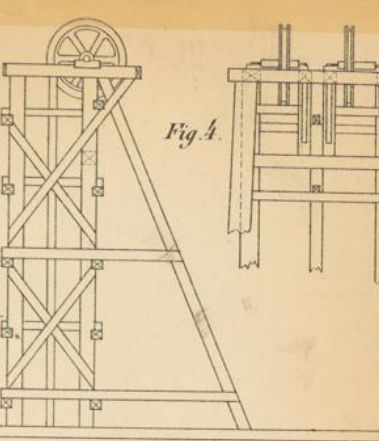


Fig. 3.

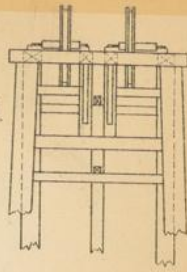


Fig. 4.

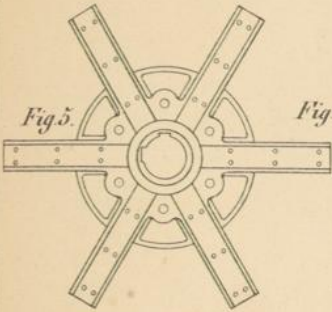


Fig. 5.

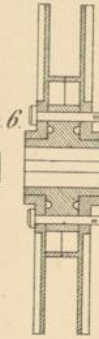


Fig. 6.



Fig. 9.

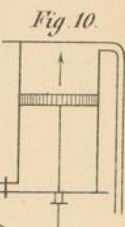


Fig. 10.

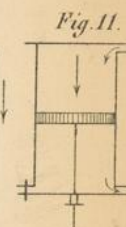


Fig. 11.

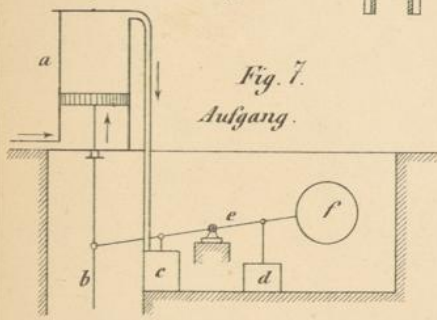


Fig. 7.  
Aufgang.

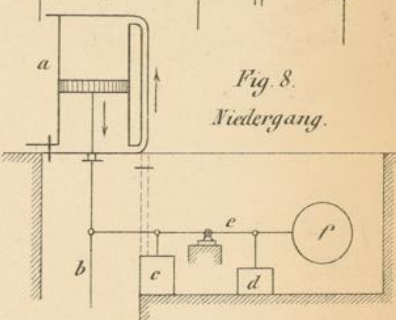


Fig. 8.  
Niedergang.

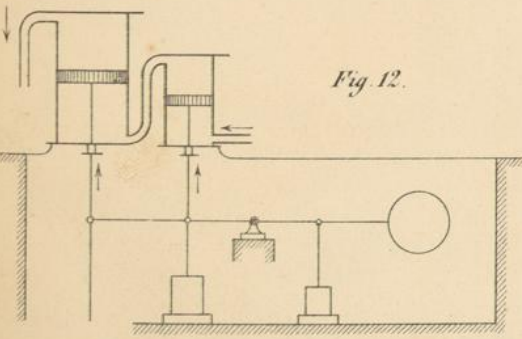


Fig. 12.

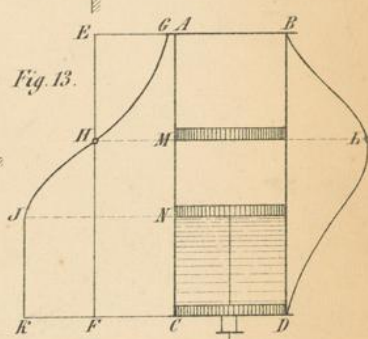


Fig. 13.

12 877070