

Badische Landesbibliothek Karlsruhe

Digitale Sammlung der Badischen Landesbibliothek Karlsruhe

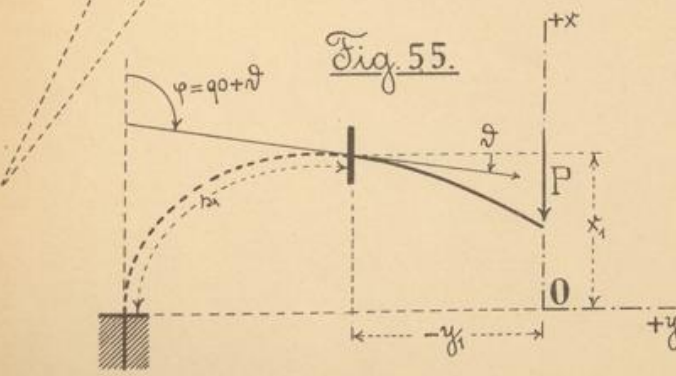
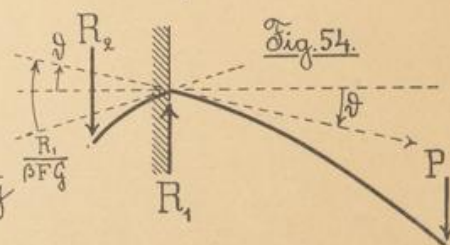
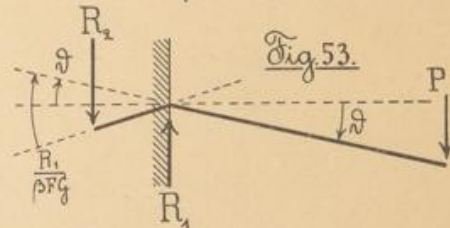
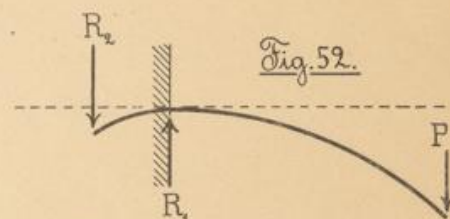
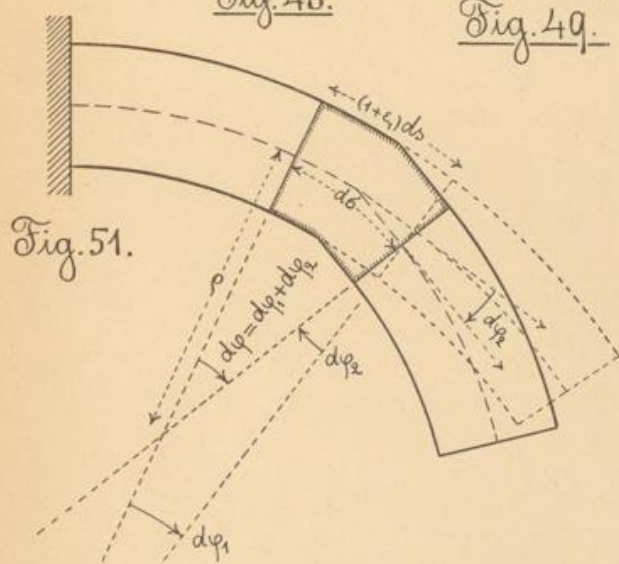
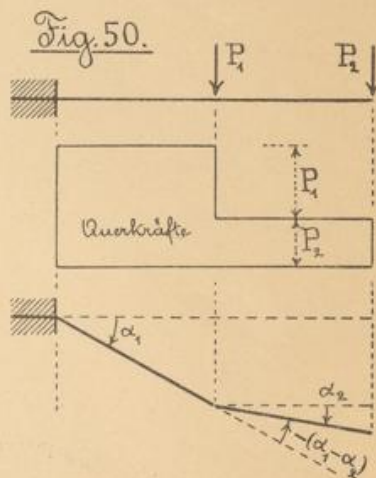
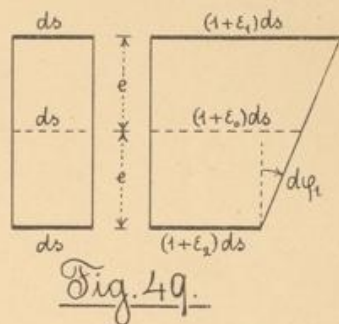
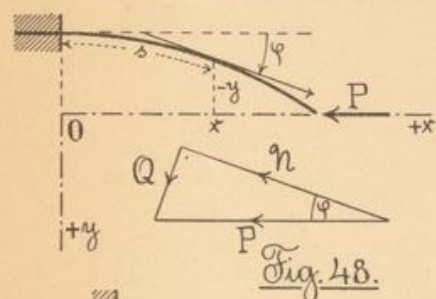
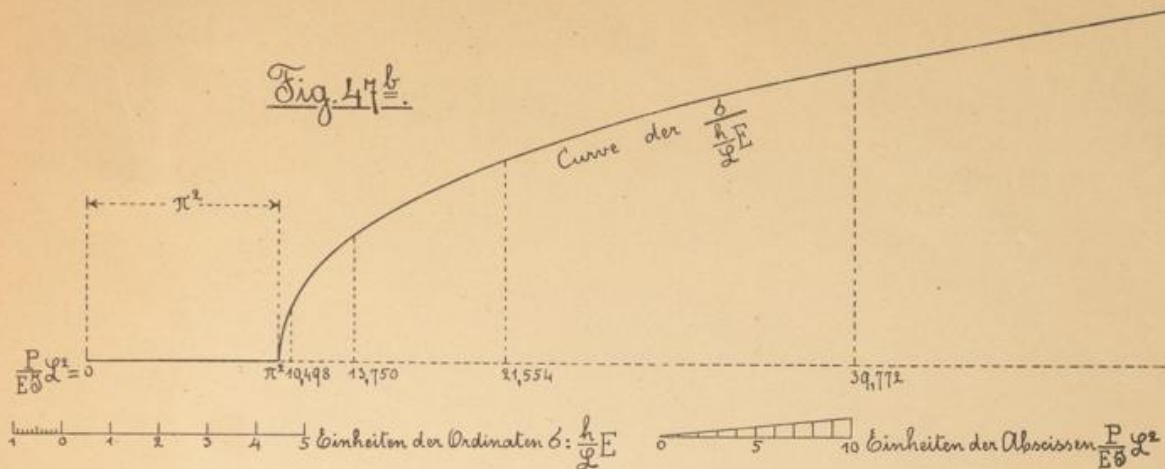
Labile und stabile Gleichgewichtsfiguren vollkommen elastischer auf Biegung beanspruchter Stäbe mit besonderer Berücksichtigung der Knickvorgänge

Kriemler, Karl

1902

Illustration: Tafel X.

[urn:nbn:de:bsz:31-270207](https://nbn-resolving.org/urn:nbn:de:bsz:31-270207)



2. Januar

