

Badische Landesbibliothek Karlsruhe

Digitale Sammlung der Badischen Landesbibliothek Karlsruhe

Fantaisie sur Linda di Chamounix

Alard, Delphin

Mayence [u.a.], [ca. 1845]

Violoncello & Kontrabass

[urn:nbn:de:bsz:31-283508](https://nbn-resolving.org/urn:nbn:de:bsz:31-283508)

P. 2
Pafso.



Allegro maestoso

INTRODUCTION.

ff

Musical notation for the first system of the introduction, featuring a grand staff with two staves. The music is in 2/4 time and D major. It begins with a forte (*ff*) dynamic. The upper staff contains a melodic line with slurs and accents, while the lower staff provides a rhythmic accompaniment. A handwritten *pp* marking is visible in the upper right of the system.

Piu lento.

Musical notation for the second system, marked *Piu lento.* and *pp*. The tempo is slower than the first system. The notation includes slurs and accents. A handwritten *pp* marking is present. The system concludes with three measures of whole notes, numbered 1, 2, and 3.

A single staff of musical notation showing fingerings (4, 5, 1, 2, 3, 4) and the instruction *suivez.* (follow).

Musical notation for the third system, marked *Tempo f.* (Tempo forte). The music returns to a faster tempo and features a series of sixteenth-note patterns in the upper staff, with the lower staff providing a steady accompaniment.

Musical notation for the fourth system, marked *Tempo f.*. It includes performance instructions: *pizz.* (pizzicato), *arco.* (arco), and *suivez. pizz.* (follow, pizzicato). The upper staff features sixteenth-note patterns, and the lower staff has a rhythmic accompaniment.

Musical notation for the fifth system, marked *arco.*. The music continues with sixteenth-note patterns in the upper staff and a rhythmic accompaniment in the lower staff.

Musical notation for the sixth system, marked *pizz.* and *pizz. moto.* (pizzicato, moto). The tempo is slightly faster than the previous section. The upper staff has a melodic line with slurs, and the lower staff has a rhythmic accompaniment.

poco rall.

Thème

f. pizz.
f. fortissimo
f.

arco.

ff TUTTI.

1^{re} VAR.

Tempo f.
pp

suivez. Tempo f.
f.

TUTTI. Tempo f.
pp

rall.
crescen - do

ff



2^d VAR. *pizz.*

Tempo 1^o

f *suivez.* *p*

Tempo 1^o

Alto TUTTI.

ff

B^{son}

piu lento.

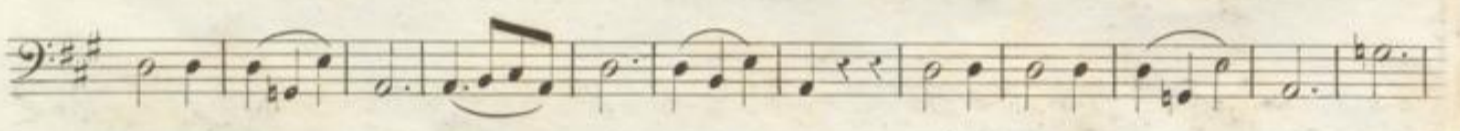
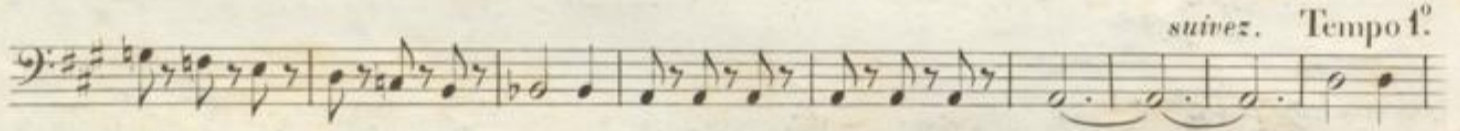
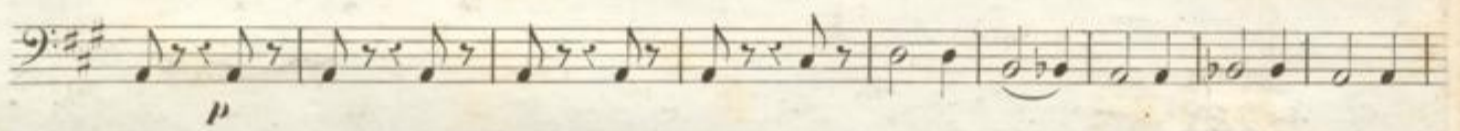
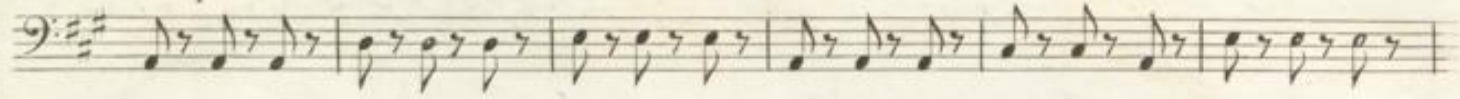
Adagio.

pp

1 2 3 4 5

FINAL.

Tempo f^o



VIOLONCELLE et C-BASSE.

suivez. Tempo f^o

arco.

1 2 3

B^{son}

Tempo f^o

4 5 6 7 Cello *suivez.*

Piu mosso.

Fis Tempo f^o

poco ritenuto. *ff* FINE.

