

# **Badische Landesbibliothek Karlsruhe**

**Digitale Sammlung der Badischen Landesbibliothek Karlsruhe**

## **L' africaine**

**Meyerbeer, Giacomo**

**Paris [u.a.], [ca. 1865]**

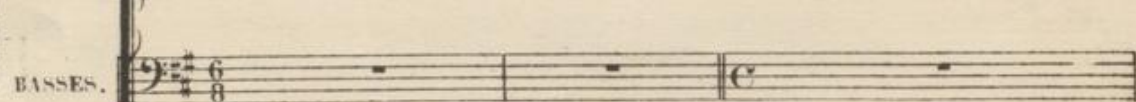
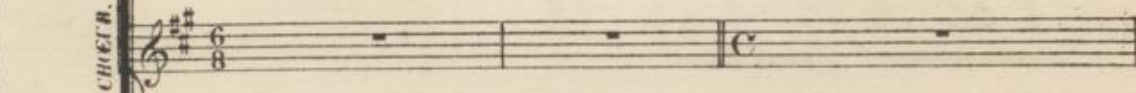
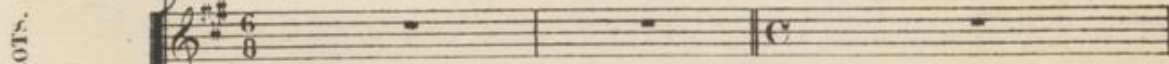
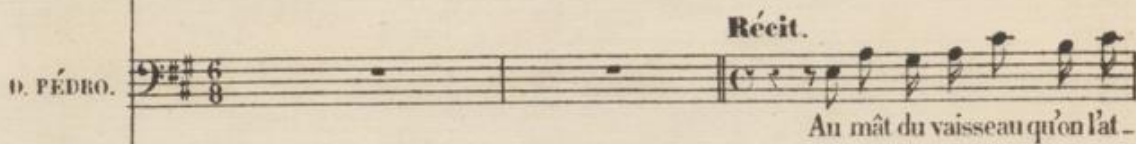
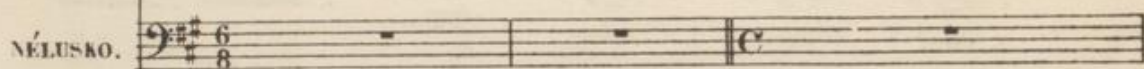
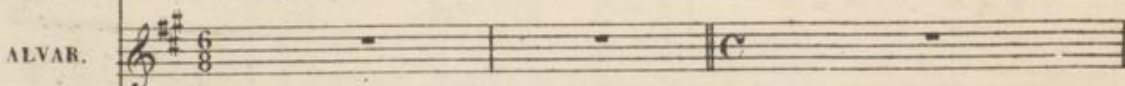
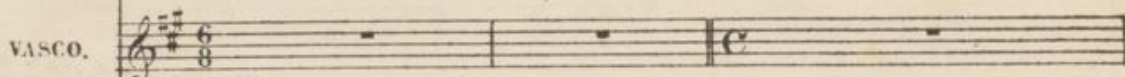
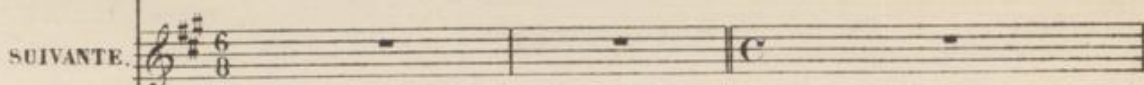
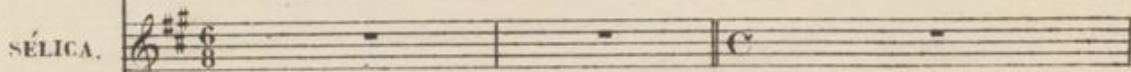
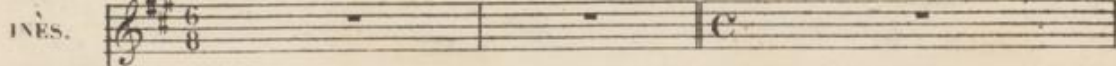
Récit

[urn:nbn:de:bsz:31-318140](https://nbn-resolving.org/urn:nbn:de:bsz:31-318140)

## N° 15. FINALE.

RÉCIT.

Même mouvement.



Même mouvement.

PIANO.

*fp trem: Récitatif.*



D.P. *ta\_ che, Que les bal - les de vos mous\_quets nous en fas\_sent jus\_ti - ce!*

SÉL.:  
Quelle voix!  
INÉS. (à part)  
Vasco! C'est

VAS:  
Lâ\_ che!

Récit *All<sup>o</sup> moderato.*

(à part) *cantabile.*  
c'est lui! Ah, que ma voix flé - chis -

lui, c'est lui! Ah, que ma voix flé - chis -

D.PED: (aux soldats) ..

A la mort, à la mort! *cantabile.*  
*ben marcato.*



I sé, Cet ar - rêt cet ar\_rêt ri\_gou-reux, seigneur pi -

S -sé, Cet ar - rêt cet ar\_rêt ri\_gou-reux, seigneur pi -

D P *f* Non, non

I -tié, seigneur pi - tié!

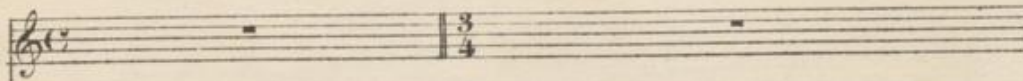
S -tié, seigneur pi - tié!

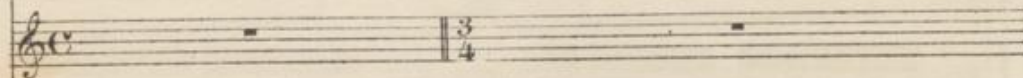
D P non, non, soldats qu'on o\_bé - is - se

*ff* All<sup>o</sup>

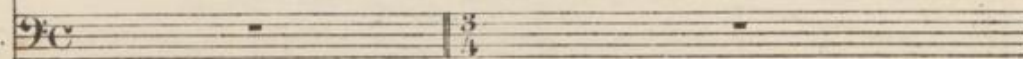


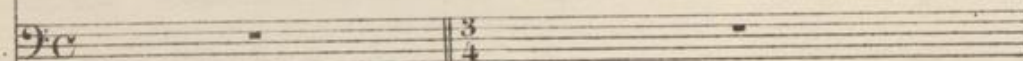
## SCÈNE.

INÈS. 

SÉLICA. 

ALVAR. *Un matelot en haut du mât.*  
  
 Aux voi - les, au cor -

NÉLUSKO. 

D. PÉDRO. 

PIANO.   
*f*

- da - ge, Voi - ci l'o - ra - ge,  




*ff* *orage.*

*ff* *p* *ff*

*p* *ff* *All. mod.º*

*ff* *le vaisseau touche sur un récif.*  
*f* *les Indiens montent à l'abordage.*



First system of piano introduction, featuring a treble and bass clef with complex chordal textures and melodic lines.

Second system of piano introduction, continuing the complex textures from the first system.

NÉLUSKO. *Récit.*

*f* A moi fils de Shi -

Vocal line and piano accompaniment for the first vocal line. The piano part features a steady accompaniment of chords.

N - va

Voi - ci vos en - ne -

Vocal line and piano accompaniment for the second vocal line. The piano part continues with a consistent accompaniment.

N - mis sur ces ré - eifs Je vous les ai con -

Vocal line and piano accompaniment for the third vocal line. The piano part concludes with a final chord.