

Badische Landesbibliothek Karlsruhe

Digitale Sammlung der Badischen Landesbibliothek Karlsruhe

Processional cantonale - Cod. Ettenheim-Münster 379

[S.l.], 1726

Tenebrae factae sunt

[urn:nbn:de:bsz:31-133225](https://nbn-resolving.org/urn:nbn:de:bsz:31-133225)

Cantg kmg.

Tenebro tenebro facta sunt
die cruci fixissent Jesum quod
et circa horam nonam

Alleg

Tenebro tenebro facta sunt
cum cruci fixissent quod et circa
horam nonam

Cant. 29.

16

Tenebro tenebro facta sunt

Quia crucifixus est Jesus Christus

decima hora nona

Bassus.

Tenebro tenebro facta sunt quia cruci-

fixus est Jesus Christus

decima hora nona

am

facta sunt

quia cruci-

fixus est

decima

hora nona

am

am

am

am

am

am

Cantata

obo

Handwritten musical score for the first system. It consists of three staves. The top staff is a vocal line with lyrics: "exclamavit exclamavit Jeshu =". The middle staff is another vocal line with lyrics: "Deus magnus Deus magnus Deus meus". The bottom staff is for the oboe, with the lyrics "et quidme dereliquisti." written below it. The music is in a common time signature and features various note values and rests.

Alto

Handwritten musical score for the second system. It consists of three staves. The top staff is a vocal line with lyrics: "exclamavit exclamavit Jeshu =". The middle staff is another vocal line with lyrics: "Deus magnus Deus meus Deus meus". The bottom staff is for the oboe, with the lyrics "et quidme dereliquisti." written below it. The music is in a common time signature and features various note values and rests.

Cantata 29

12

exclamavit exclamavit Jhesu voce

magna Deus meus Deus

meus ultima dereliquisti - i

Bass.

exclamavit exclamavit

Jhesu voce magna Deus meus Deus meus

ultima dereliquisti - i

Cantata

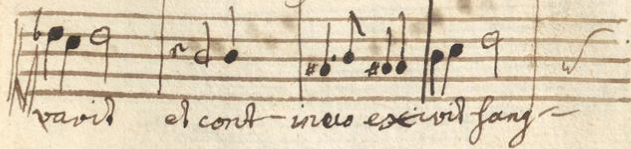
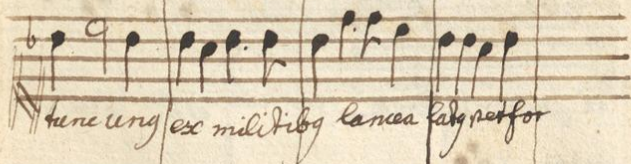
Et inclinatio capite emissa frontis
tunc unq[ue] ex militibus lancea latq[ue] perfor-
avit et continuo exivit sang[ue]

Altus

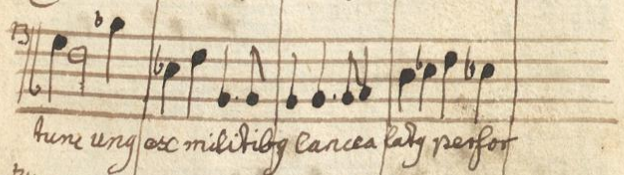
Et inclinatio capite emissa frontis
tunc unq[ue] ex militibus lancea latq[ue] perfor-
avit et continuo exivit sang[ue]

Cantg 2

15

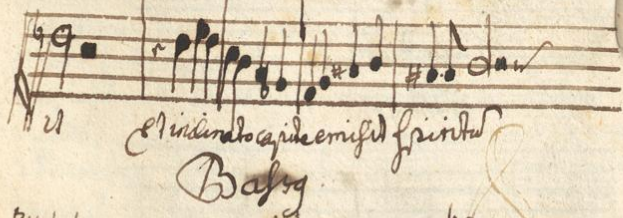
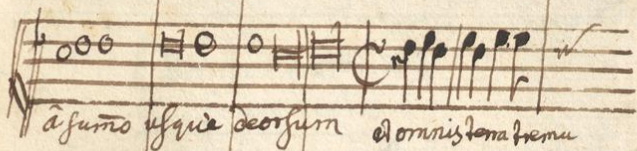
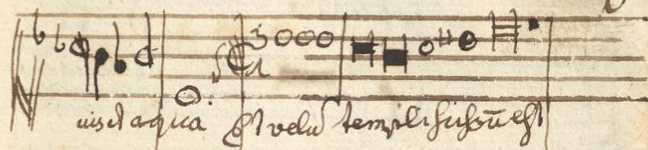


Bassus.



uis et aqua et velut templi factus est
a summo usque deorsum et omnis terra tremu-
it et inclinat capite omnis spiritus
fletus.

uis et aqua et velut templi factus est
a summo usque deorsum et omnis terra tremu-
it et inclinat capite omnis spiritus



Cantg a



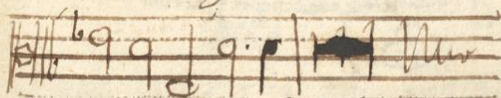
emissio spiritum

Cantg z



emissio spiritum -

Allg.



emissio spiritum

Brassg



In Sabbatho sancto fit processio extra
foram caelestis sine cantu ad benedictionem
ignis ibidem parati. in reditu ad ingressum
caelestis cantatur a diacono: Lumen Christi
et respondetur a choro: Deo gratias. Item z cantatur