

# **Badische Landesbibliothek Karlsruhe**

**Digitale Sammlung der Badischen Landesbibliothek Karlsruhe**

## **Göthe-Galerie**

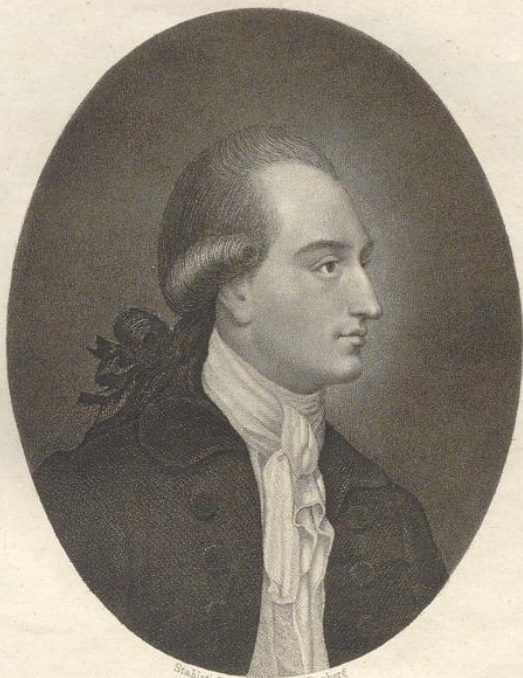
Stahlstiche zu Göthe's Meisterwerken

**Nisle, Julius**

**Stuttgart, 1840**

[Illustrationen]

[urn:nbn:de:bsz:31-333739](https://nbn-resolving.org/urn:nbn:de:bsz:31-333739)

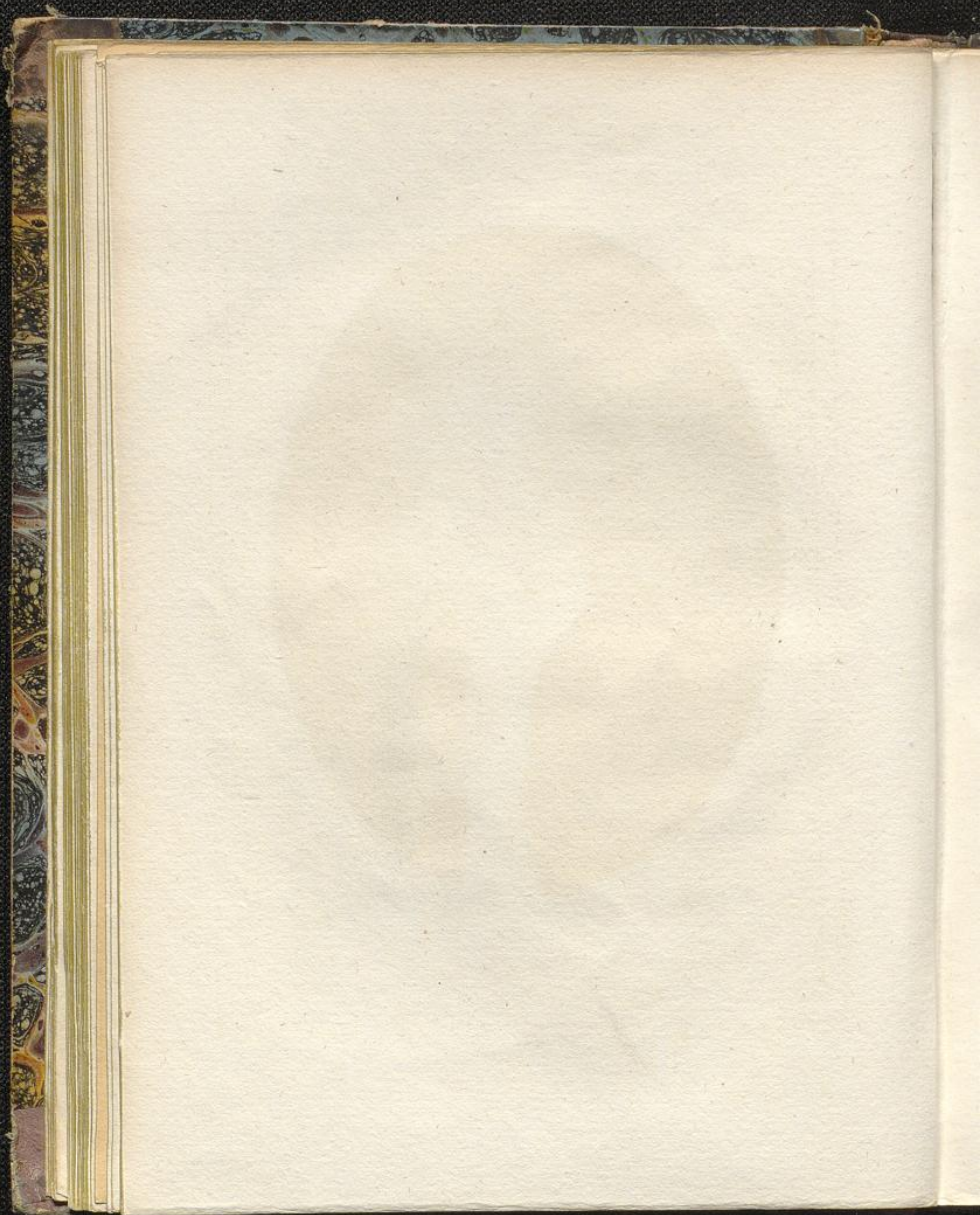


*Stichlich von Carl Mayer, Nürnberg*

## GOETHE

nach May's Oelgemälde, 1779.

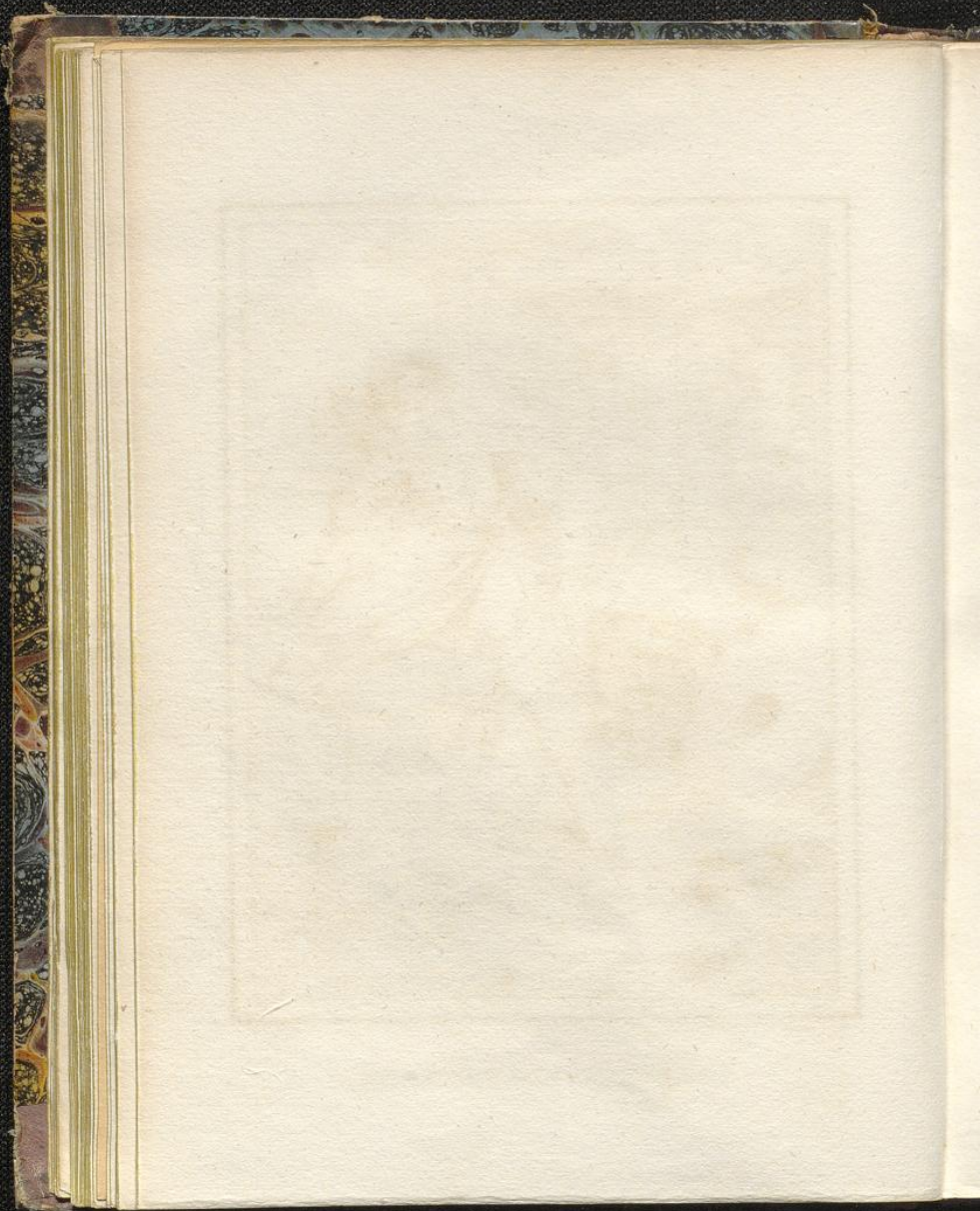
Stuttgart, Literatur-Comptoir.





*Sieck u. Druck v. W. Pöhlke!*

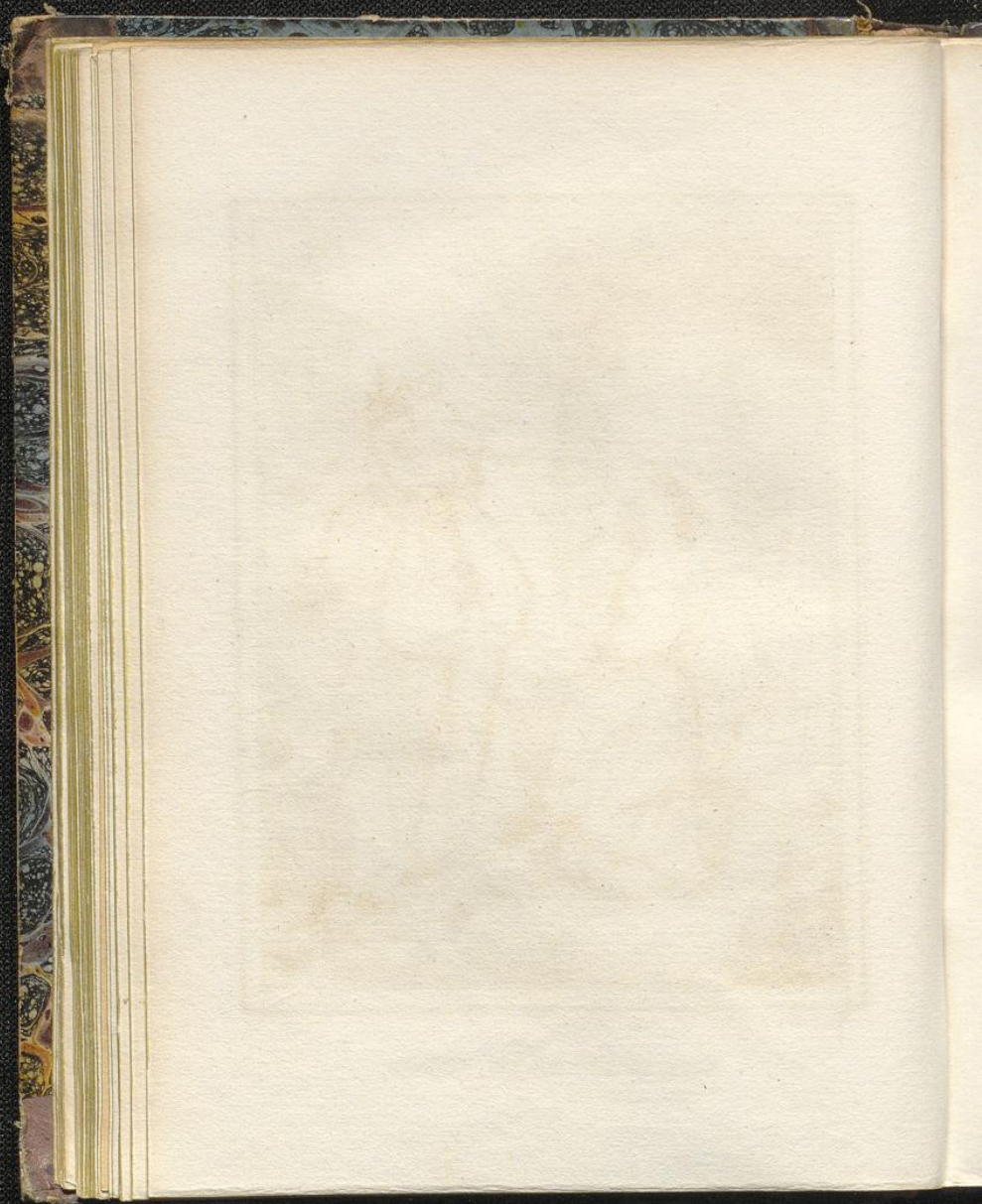
## DER MÜLLERIN VERRATH.

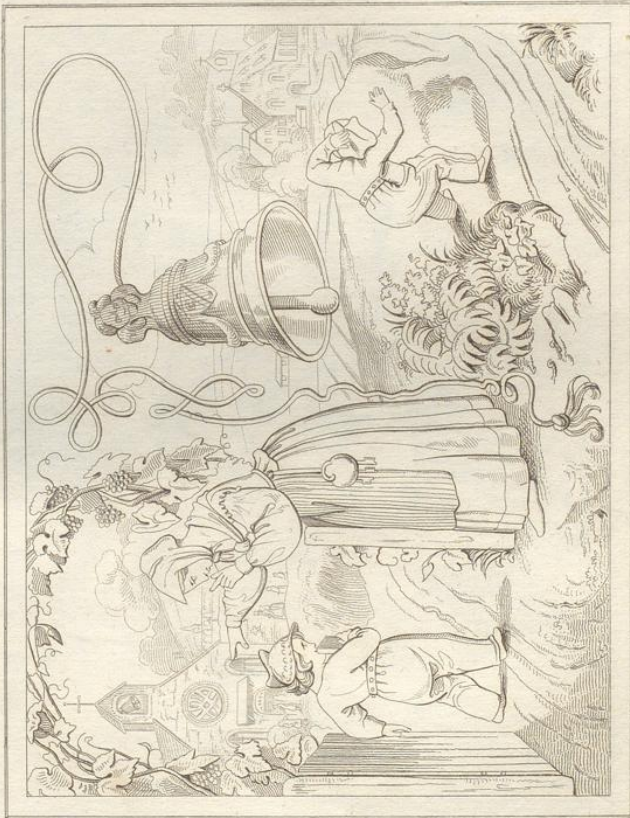




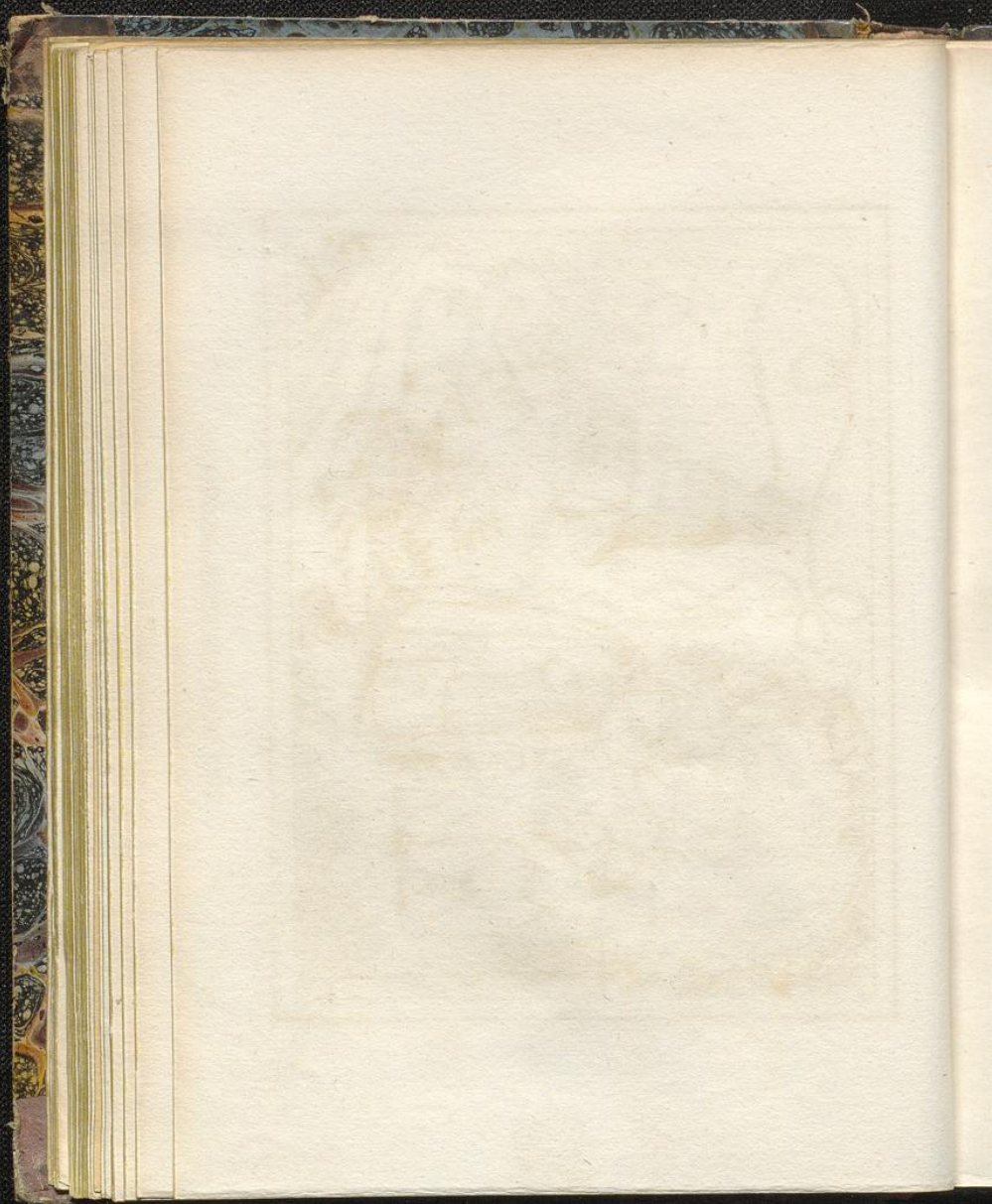
*Stich u. Druck v. W. Fehder.*

DER MÜLLERIN REUE.





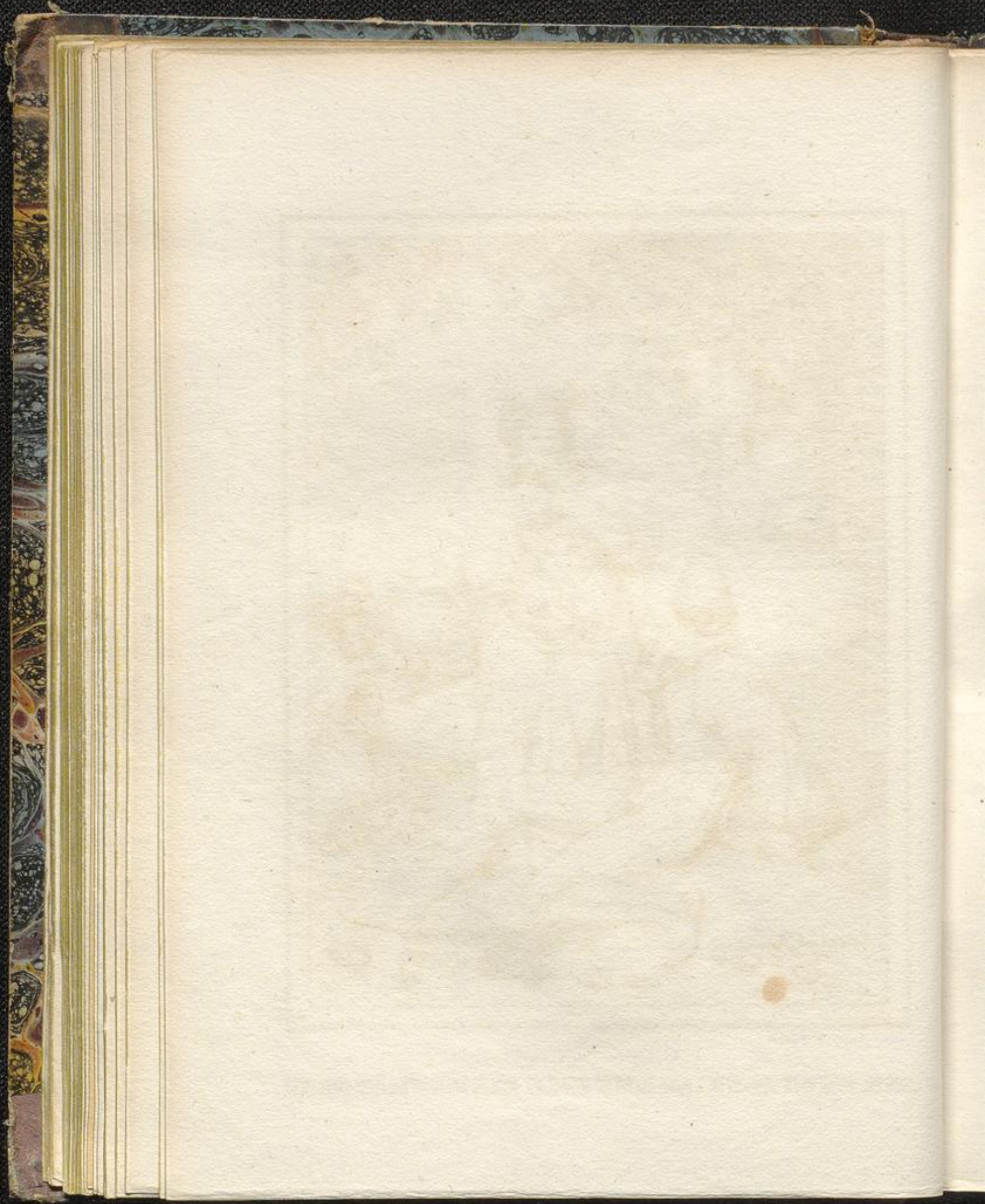
DIE WANDELNDE GLOCKE.

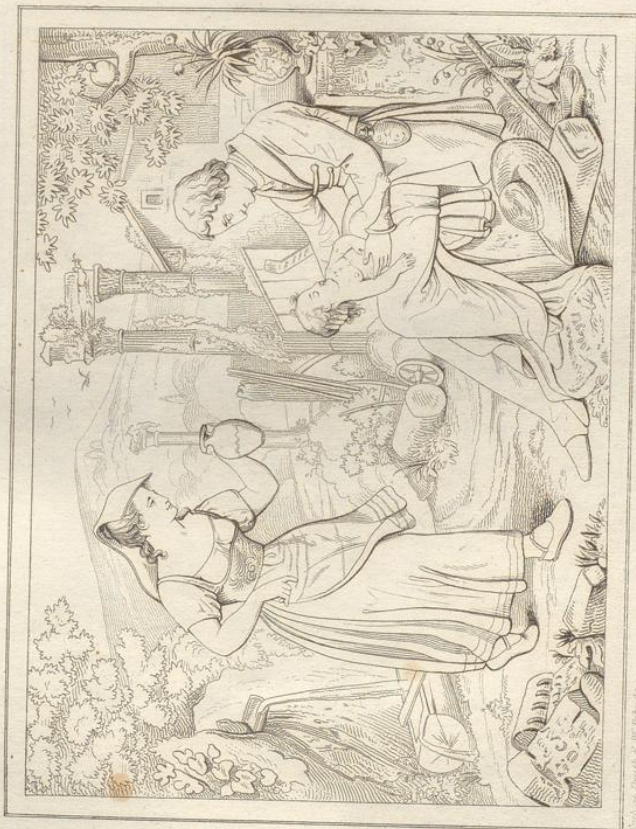




*Nach einem Druck d. W. Zschade.*

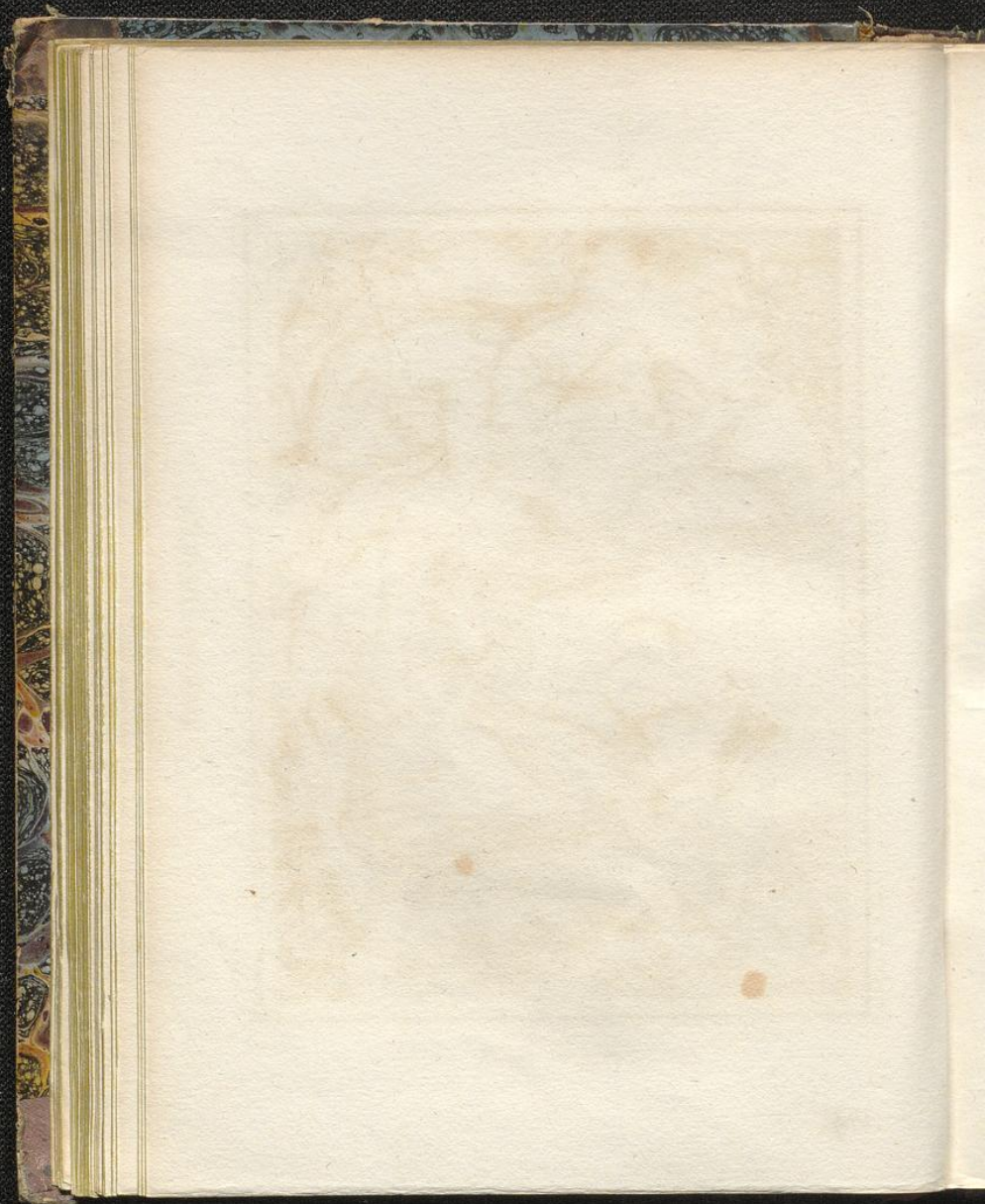
DER NEUE PAUSIAS UND SEIN BLUMENMÄDCHEN.





DIE WANDERER.

Verlag von Friedrich v. Schönbacher.

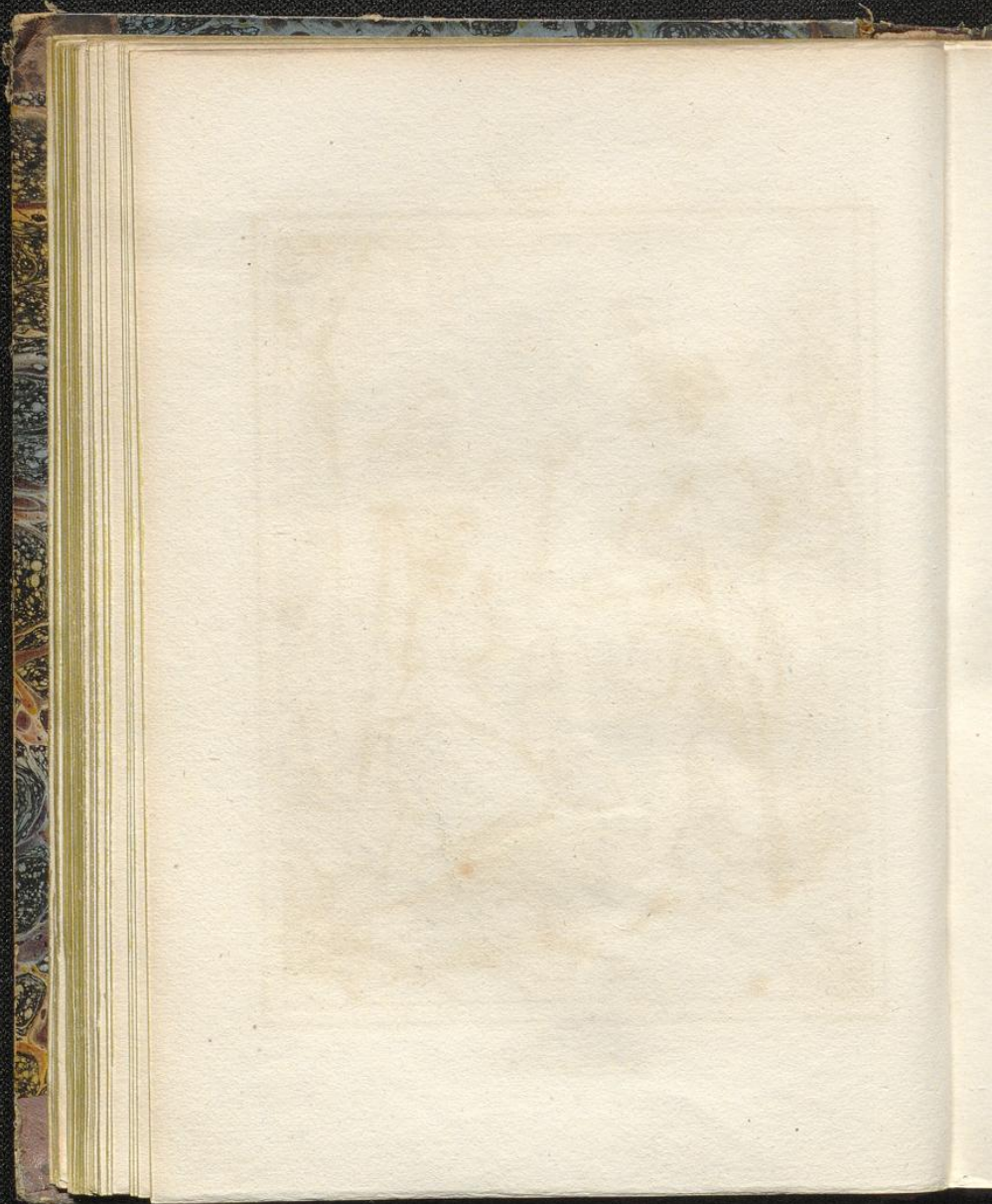




Nach dem Gedichte von W. Schiller.

BALLADE.

I

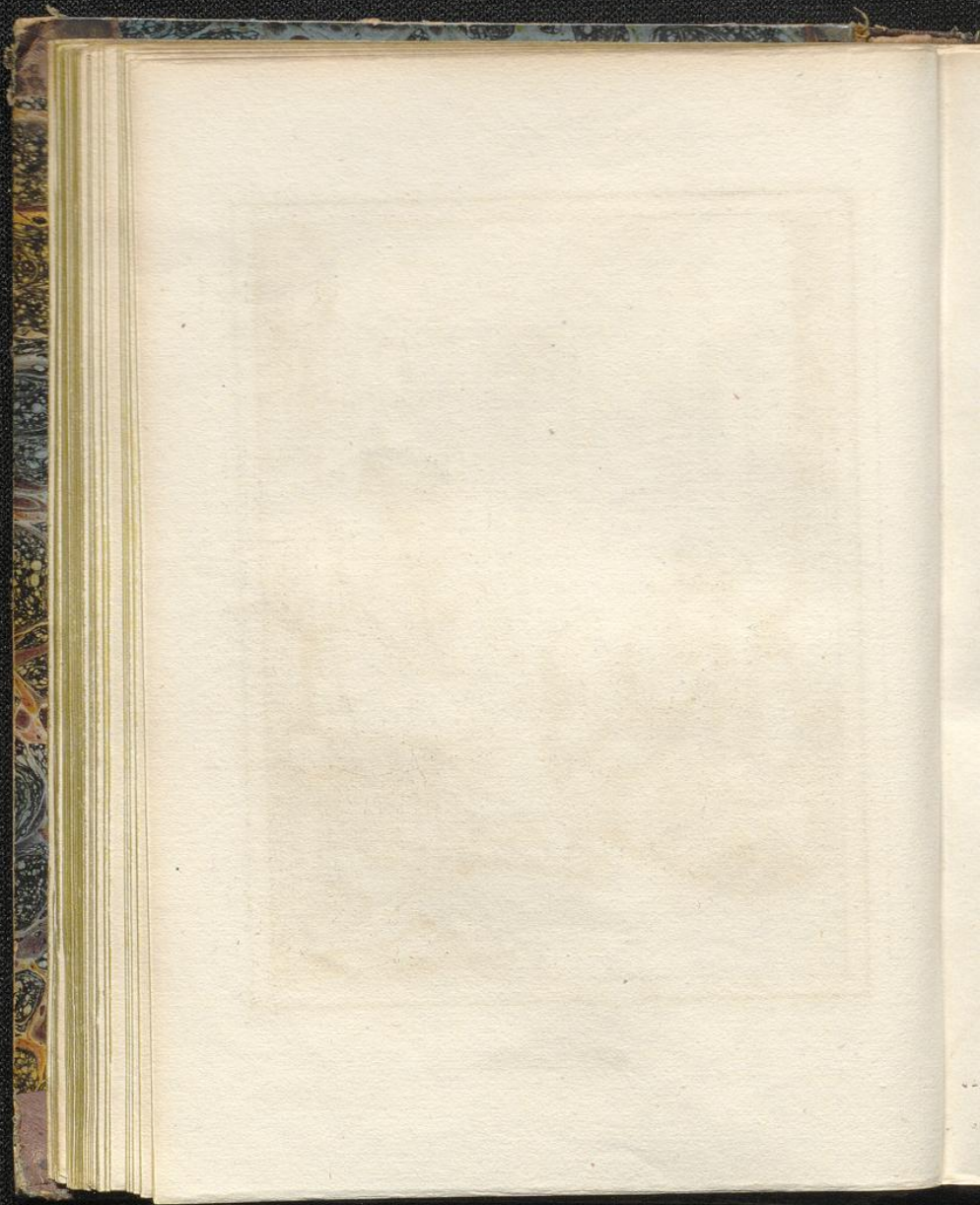




*Nach u. Druck v. W. Pöndke.*

BALLADE.

I.





*Stich v. Ulrich d. W. Pöschel.*

BALLADE.

III.

